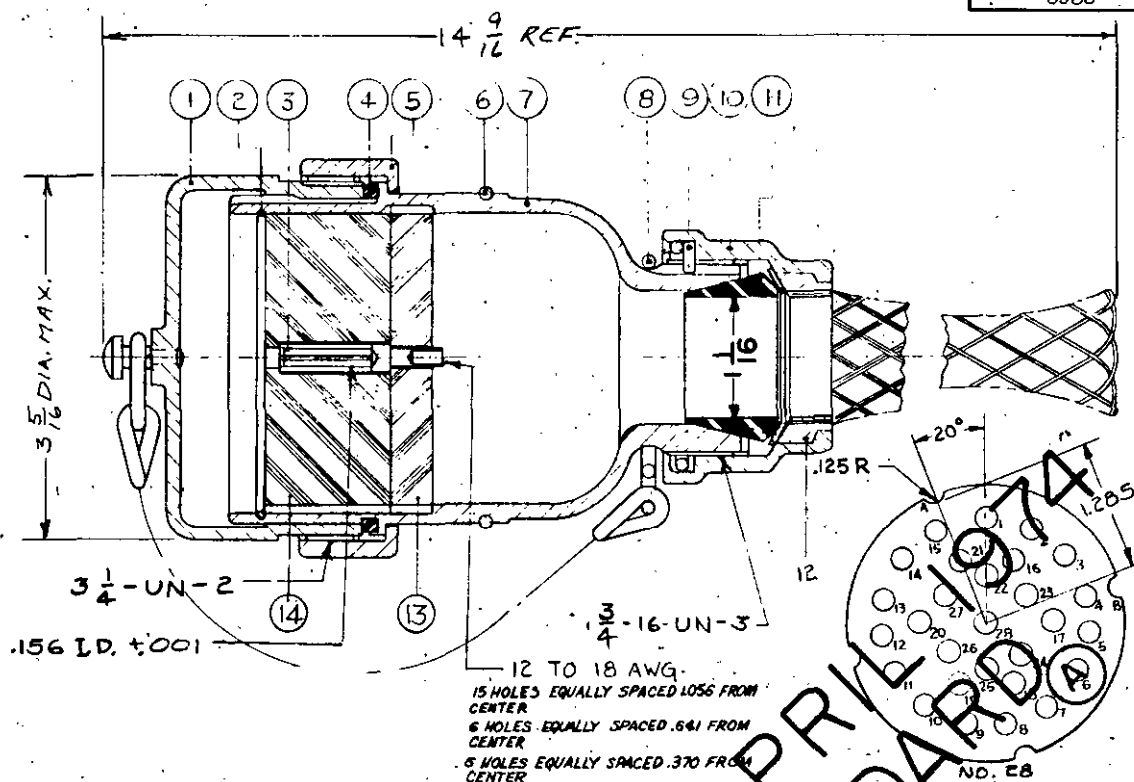


FED. SUP CLASS

5935



FOR REFERENCE ONLY

COMPONENT	NOMENCLATURE	ORDNANCE PART NO.	NO. REQD
1	COVER, ELECTRICAL CONNECTOR (RIVETED)	6173162	1
2	RING, RETAINING	5183444	1
3	CONTACT, ELECTRICAL	7632545	28
4	GASKET	5183448	1
5	NUT, COUPLING	6173161	1
6	RING, RETAINING	5183454	1
7	SHELL, ELECTRICAL CONNECTOR	8206543	1
8	RING, CONNECTING, ROUND	5048706	1
9	SPRING, TORSION	5048702	1
10	ADAPTER	5183467	1
11	BUSHING, MOLDED	540631	1
12	GRIP, CABLE, WOVEN	8206675	1
13	INSULATOR, DISK	7632550	1
14	INSULATOR, DISK	7632549	1

## NOTES:

- All dimensions in inches.
- Service Ratings (at sea level) = 200 DC volts.  
= 150 AC volts.  
= 30 amperes (max).
- For design feature purposes, this standard takes precedence over procurement documents referenced herein.
- Referenced documents shall be of the issue in effect on date of invitations for bid.

## Engineering Data:

Refer to MS 27178 for matching male electrical receptacle connector.  
Refer to MS 27176 for matching male electrical plug connector.

PART NUMBER

MS 27175-1

P.A. ORD Other Cust SHIPS	TITLE CONNECTOR, PLUG, ELECTRICAL - 28 CONDUCTOR TYPE I, STYLE S, CLASS 1 (200 VDC; 30 A)	MILITARY STANDARD MS 27175
PROCUREMENT SPECIFICATION MIL-C-27699	SUPERSEDES:	SHEET 1 OF 1

DD FORM 672-1 (Coordinated)

PREVIOUS EDITIONS OF THIS FORM ARE OBSOLETE.

NOTICE—When Government drawings, specifications, or other data are used for any purpose other than in connection with a definitely related Government procurement operation, the United States Government thereby incurs no responsibility, nor any obligation whatsoever; and the fact that the Government may have formulated, furnished, or in any way supplied this said drawings, specifications, or other data is not to be regarded by implication or otherwise as in any manner licensing the holder or any other person or corporation, or conveying any rights or permission to manufacture, use, or sell any patented invention that may in any way be related thereto.

This military standard is approved by the Department of Defense and is mandatory on all activities. Selection for all new engineering and design applications and for repetitive use shall be made from this document.

APPROVED 2 OCT 61 REVISED 9 APRIL 1974