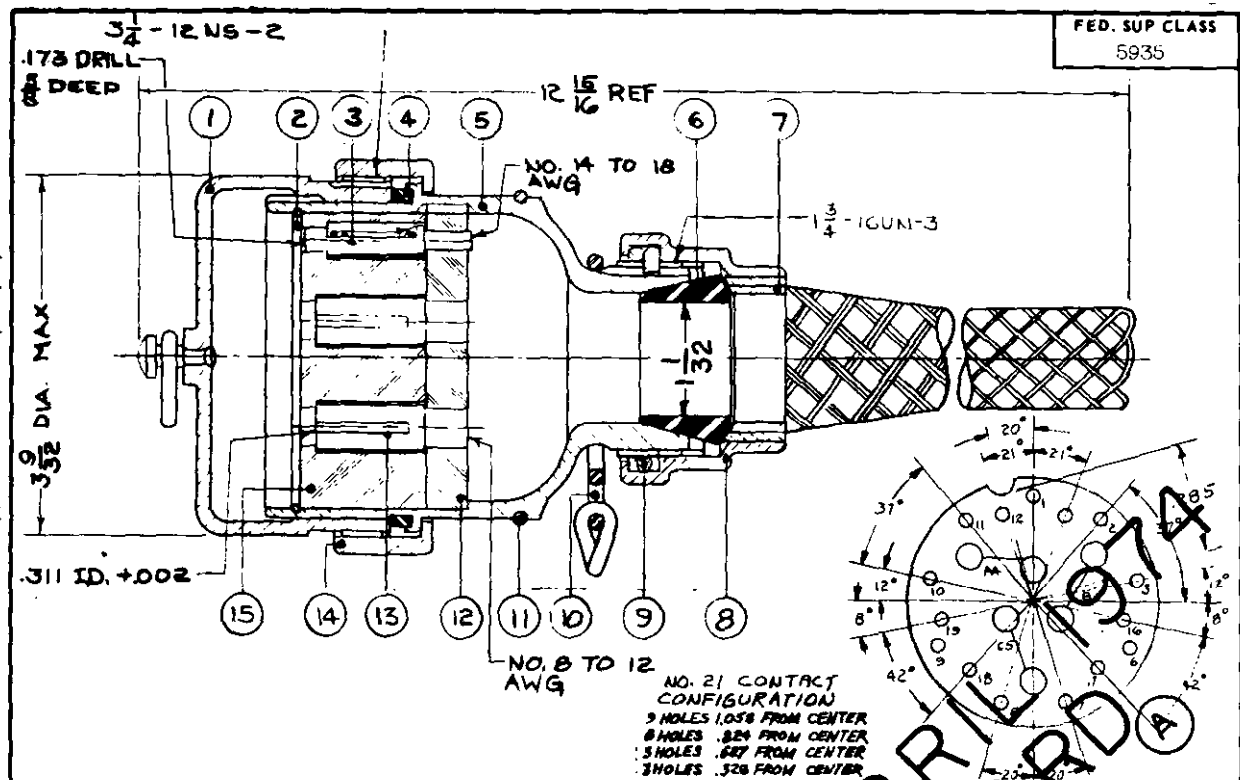


NOTICE—When Government drawings, specifications, or other data are used for any purpose other than in connection with a definitely related Government procurement operation the United States Government thereby incurs no responsibility, nor any obligation whatsoever; and the fact that the Government may have furnished, furnished, or in any way supplied the said drawings, specifications, or other data is not to be regarded by implication or otherwise as in any manner licensing the holder or any other person or corporation, or conveying any rights or permission to manufacture, use, or sell any patented invention that may in any way be related thereto.



## FOR REFERENCE ONLY

COMPONENT	NOMENCLATURE	ORDNANCE PART NO.	NO. REQUIRED
1	COVER, ELECTRICAL CONNECTOR (RIVETED)	7659726	1
2	RING, RETAINING	5183444	1
3	CONTACT, ELECTRICAL	7634989	15
4	GASKET	5183448	1
5	SHELL, ELECTRICAL CONNECTOR	5578605	1
6	BUSHING, MOLDED	540630	1
7	GRIP, CABLE, WOVEN	6206675	1
8	ADAPTER	5183467	1
9	SPRING, TORSION	5046702	1
10	RING, CONNECTING, ROUND	5048706	1
11	RING, RETAINING	5183454	1
12	INSULATOR, DISK	6173150	1
13	CONTACT, ELECTRICAL	5183449	6
14	NUT, COUPLING	6173161	1
15	INSULATOR, DISK	6173149	1

## NOTES:

- All dimensions in inches.
- Service Ratings (at sea level) = 200 DC volts.  
= 150 AC volts.  
= 30 amperes (max) for small contact.  
= 45 amperes (max) for large contact.
- For design feature purposes, this standard takes precedence over procurement documents referenced herein.
- Referenced documents shall be of the issue in effect on date of invitations for bid.

## Engineering Data:

Refer to MS 27172  
Refer to MS 27174

for matching male electrical plug connector.  
for matching male electrical receptacle connector.

PART NUMBER

MS 27171-1

P.A. ORD	TITLE	MILITARY STANDARD
Other Cust SHIPS	CONNECTOR, PLUG, ELECTRICAL - 21 CONDUCTOR TYPE I, STYLE S, CLASS 1 (200 VDC; 45 A, 30 A)	MS 27171
PROCUREMENT SPECIFICATION MIL-C-27699	SUPERSEDES:	SHEET 1 OF 1