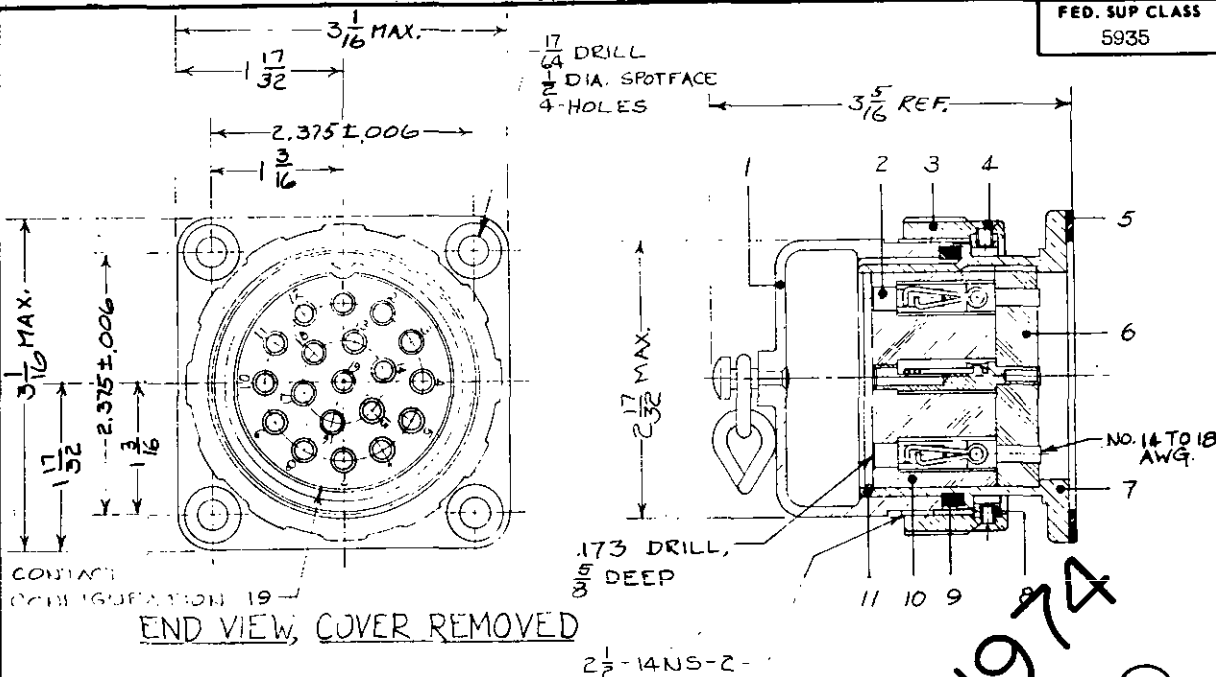


NOTICE—When Government drawings, specifications, or other data are used for any purpose other than in connection with a definitely related Government procurement operation, the United States Government thereby incurs no responsibility, nor any obligation whatsoever; and the fact that the Government may have furnished, furnished, or in any way supplied the said drawings, specifications, or other data is not to be regarded by implication or otherwise as in any manner licensing the holder or any other person or corporation, or conveying any rights or permission to manufacture, use, or sell any patented invention that may in any way be related thereto.

FED. SUP CLASS  
5935



FOR REFERENCE ONLY

COMPONENT	NOMENCLATURE	ORDNANCE PART NO.	NO. REQD
1	COVER, ELECTRICAL CONNECTOR (RIVETED)	7634986	1
2	CONTACT, ELECTRICAL	7634989	19
3	NUT, COUPLING	5045415	1
4	SCREW, MACH, FLAT HD.	421387	4
5	GASKET	5041475	1
6	INSULATOR, DISK	5041134	1
7	SHELL, ELECTRICAL CONNECTOR	6136049	1
8	SHOE	5045414	4
9	GASKET	5041482	1
10	INSULATOR, DISK	5045413	1
11	RING, RETAINING	5041138	1

PART NUMBER

MS 27169-1

NOTES:

- All dimensions in inches.
- Service Ratings (at sea level) = 200 DC volts,  
= 150 AC volts,  
= 30 amperes (max).
- For design feature purposes, this standard takes precedence over procurement documents referenced herein.
- Referenced documents shall be of the issue in effect on date of invitations for bid.

Engineering Data:

Refer to MS 27168 for matching male electrical plug connector.

P.A. ORD Other Cust SHIPS	TITLE CONNECTOR, RECEPTACLE, ELECTRICAL- 19 CONDUCTOR TYPE I, STYLE S (200 VDC; 30 A)	MILITARY STANDARD MS 27169
PROCUREMENT SPECIFICATION MIL-C-27899	SUPERSEDES:	SHEET 1 OF 1