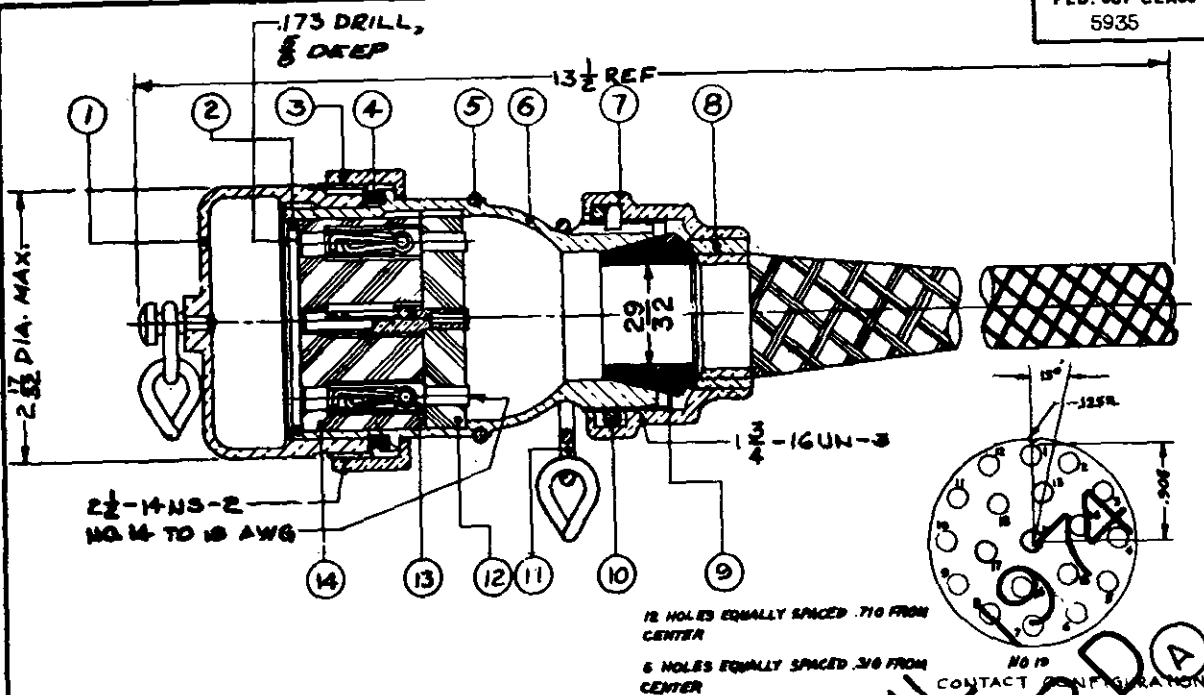


FED. SUP CLASS
5935

FOR REFERENCE ONLY

COMPONENT	NOMENCLATURE	ORDNANCE PART NO.	NO. REQD
1	COVER, ELECTRICAL CONNECTOR (RIVETED)	7659727	1
2	RING, RETAINING	5041138	1
3	NUT, COUPLING	5041122	1
4	GASKET	5041482	1
5	RING, RETAINING	5048705	1
6	SHELL, ELECTRICAL CONNECTOR	5569775	1
7	ADAPTER	5183467	1
8	GRIP, CABLE, WOVEN	8206675	1
9	BUSHING, MOLDED	540626	1
10	SPRING, TORSION	5048702	1
11	RING, CONNECTING, ROUND	5048706	1
12	INSULATOR, DISK	5041134	1
13	CONTACT, ELECTRICAL (RIVETED)	7634989	19
14	INSULATOR, DISK	5045413	1

PART NUMBER

MS27167-1

NOTES:

- All dimensions in inches.
- Service Ratings (at sea level) = 200 DC volts.
= 150 AC volts.
= 30 amperes (max).
- For design feature purposes, this standard takes precedence over procurement documents referenced herein.
- Referenced documents shall be of the issue in effect on date of invitations for bid.

Engineering Data:

Refer to MS 27168
Refer to MS 27170

for matching male electrical plug connector.
for matching male electrical receptacle connector.

P.A. ORD Other Cast SHIPS	TITLE CONNECTOR, PLUG, ELECTRICAL- 19 CONDUCTOR TYPE I, STYLE S, CLASS 1 (200 VDC; 30 A)	MILITARY STANDARD MS27167
PROCUREMENT SPECIFICATION MIL-C-27699	SUPERSEDES:	SHEET 1 OF 1