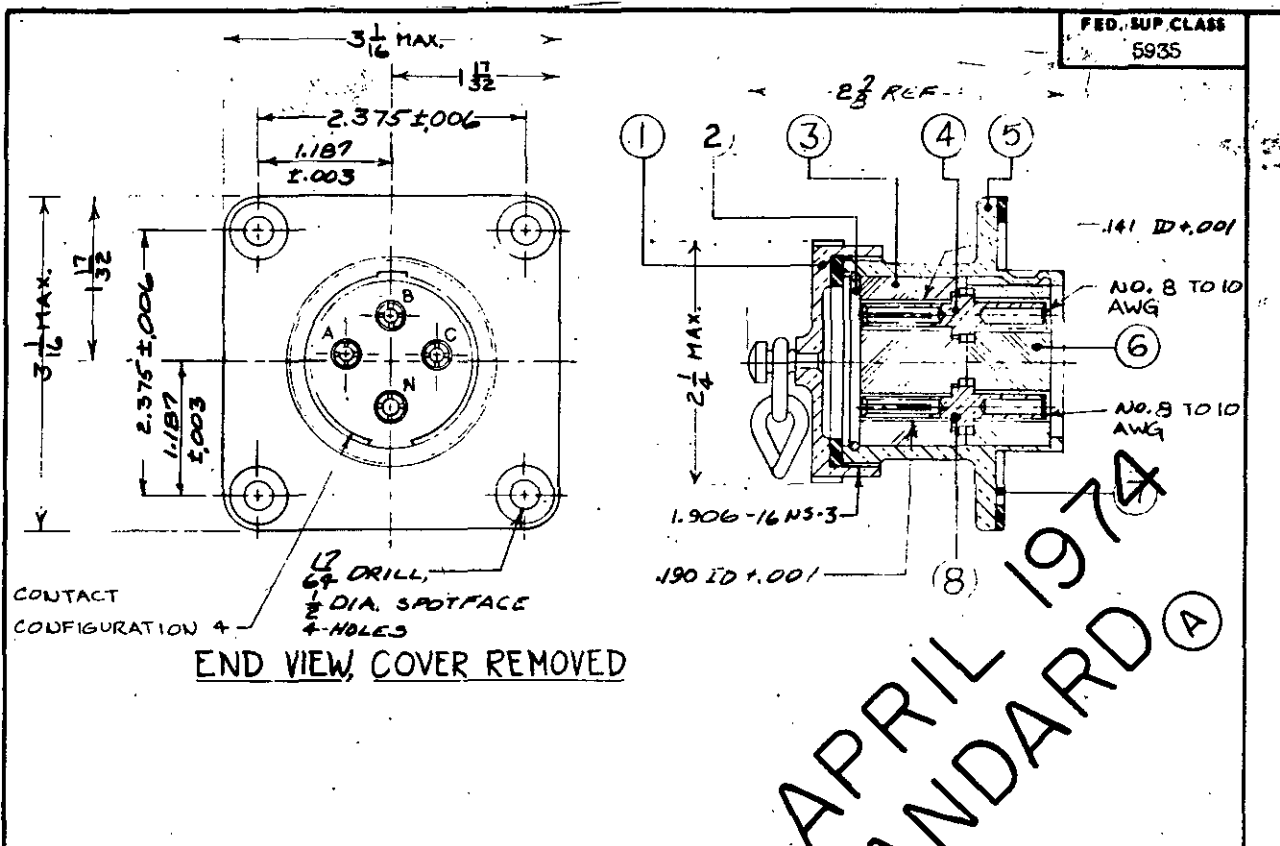


NOTICE.—When Government drawings, specifications, or other data are used for any purpose other than in connection with a definitely related Government procurement operation, the United States Government hereby incurs no responsibility, nor any obligation whatsoever, and the fact that the Government may have furnished, or in any way supplied the said drawings, specifications, or other data is not to be regarded by implication or otherwise as in any manner licensing the holder or any other person or corporation, or conveying any rights or permission to manufacture, use, or sell any patented invention that may in any way be related thereto.



FOR REFERENCE ONLY			
COMPONENT	NOMENCLATURE	ORDNANCE PART NO.	NO. REQD
1	COVER, ELECTRICAL CONNECTOR (RIVETED AND CEMENTED)	7635013	1
2	RING, RETAINING	5182787	1
3	INSULATOR, DISK	8208563	1
4	CONTACT, ELECTRICAL	8208564	3
5	SHELL, ELECTRICAL CONNECTOR	6172925	1
6	INSULATOR, DISK	8202451	1
7	GASKET	5041475	1
8	CONTACT, ELECTRICAL	8208565	1

PART NUMBER
MS27165-1

NOTES:

- All dimensions in inches.
- Service Ratings (at sea level) = 500 DC volts.
= 275 AC volts.
= 60 amperes (max).
- For design feature purposes, this standard takes precedence over procurement documents referenced herein.
- Referenced documents shall be of the issue in effect on date of invitations for bid.

Engineering Data:

Refer to MS 27164 for matching male electrical plug connector.

P.A. ORD Other Cust SHIPS	TITLE CONNECTOR, RECEPTACLE ELECTRICAL- 4 CONDUCTOR TYPE I, STYLE S (500 VDC; 60 A)	MILITARY STANDARD MS27165
PROCUREMENT SPECIFICATION MIL-C-27699	SUPERSEDES:	SHEET 1 OF 1