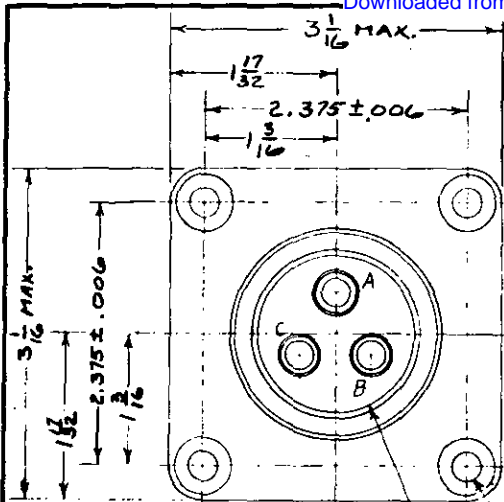


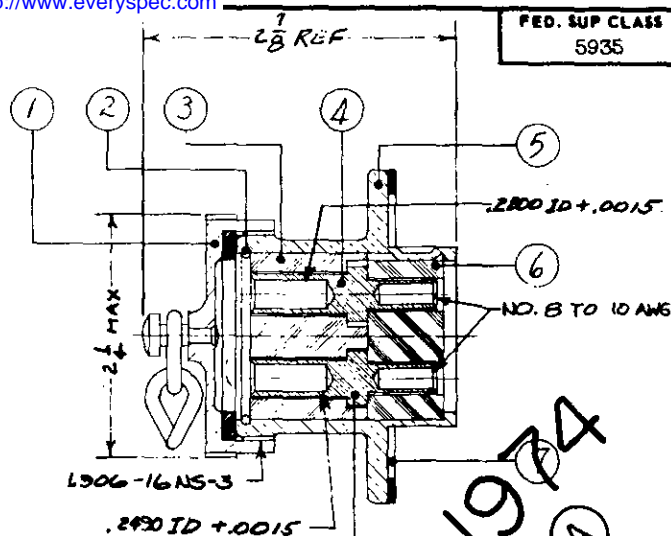
NOTICE—When Government drawings, specifications, or other data are used for any purpose other than in connection with a definitely related Government procurement operation, the United States Government thereby incurs no responsibility, nor any obligation whatsoever; and the fact that the Government may have furnished, furnished, or in any way supplied the said drawings, specifications, or other data is not to be regarded by implication or otherwise as in any manner licensing the holder or any other person or corporation, or conveying any rights or permission to manufacture, use, or sell any patented invention that may in any way be related thereto.



CONTACT CONFIGURATION 3A

17
24 DRILL
1/2 DIA SPLTFACE
4 HOLES

END VIEW, COVER REMOVED

FED. SUP CLASS
5935

2800 ID ± .0015

NO. 8 TO 10 AWG

1906-16 NS-3

2820 ID ± .0015

FOR REFERENCE ONLY

COMPONENT	NOMENCLATURE	ORDNANCE PART NO.	NO. REQD
1	COVER, ELECTRICAL CONNECTOR (RIVETED AND CEMENTED)	7635013	1
2	RING, RETAINING	5182787	1
3	INSULATOR, DISK	5182782	1
4	CONTACT, ELECTRICAL	5320569	1
5	SHELL, ELECTRICAL CONNECTOR	6172925	1
6	INSULATOR, DISK	5182786	1
7	GASKET	5041475	1
8	CONTACT, ELECTRICAL	5320570	2

PART NUMBER
MS27157-1

NOTES:

- All dimensions in inches.
- Service ratings (at sea level) = 200 DC volts.
= 150 AC volts.
= 45 amperes (max).
- For design feature purposes, this standard takes precedence over procurement documents referenced herein.
- Referenced documents shall be of the issue in effect on date of invitations for bid.

Engineering Data:

Refer to MS 27156 for matching male electrical plug connector.

P.A. ORD Other Code SHIPS	TITLE CONNECTOR, RECEPTACLE ELECTRICAL- 3 CONDUCTOR TYPE I, STYLE S (200 VDC; 45A)	MILITARY STANDARD MS 27157
PROCUREMENT SPECIFICATION MIL-C-27699	SUPERSEDES:	SHEET 1 OF 1

DD FORM 672-1 (Coordinated)

PREVIOUS EDITIONS OF THIS FORM ARE OBSOLETE.

APPROVED 2 OCT 61 REVISED (A) 9 APRIL 1974