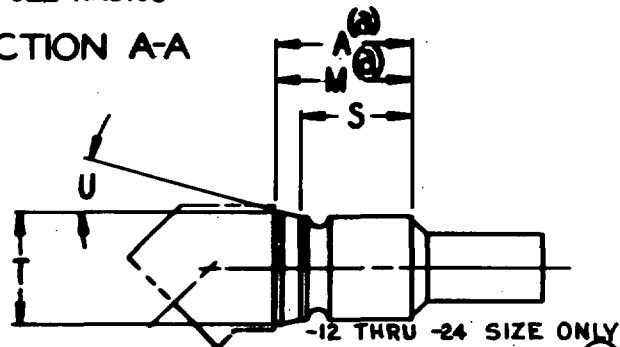
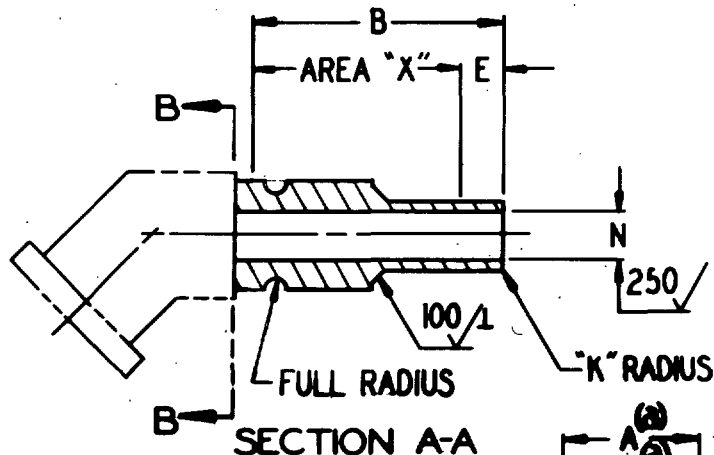
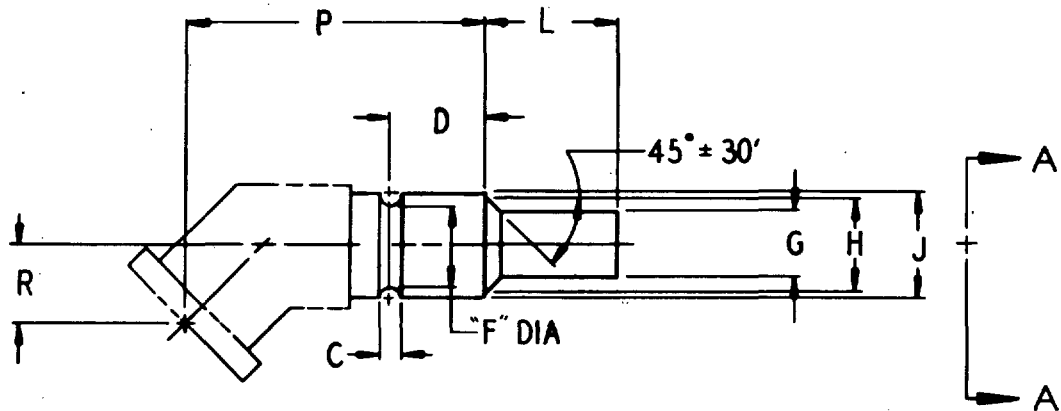


FED. SUP CLASS  
4730User Activities:  
Army-WC, ME, MIReview Activities:  
Army-AV  
Navy-AS  
Air Force-82

This military standard is approved by the Department of Defense and is mandatory on all activities. Selection for all new engineering and design applications and for repetitive use shall be made from this document.



**MATERIAL :** CORROSION RESISTING STEEL : CLASS 321 COLD FIN.  
CONDITION "A", SPECIFICATION QQ-CP-19.  
ALUMINUM ALLOY : 6061-T831 OR T6  
SPECIFICATION QQ-A-221/8.

**FINISH :** CORROSION RESISTING STEEL : PASSIVATE PER MIL-F-27272  
ALUMINUM ALLOY : ANODIZE SPECIFICATION  
MIL-A-8623, TYPE B, DYE BLUE, (B) FOR CHANGES SEE SHEETS 1 & 2.

P.A. Air Force-II Other Cust Army-AV Navy-AS	TITLE (B) ELBOW, NIPPLE END, SWIVEL FLANGE TO HOSE-45°	MILITARY STANDARD
Procurement Specification MIL-F-27272	SUPERSEDES:	SHEET 1 OF 2

DD FORM 672 (Coordinated) PREVIOUS EDITIONS OF THIS FORM ARE OBSOLETE.

APPROVED 1 Sep 61 Revised (A) 2 May 66 (B) 30 Jun 72

NOTE: The Government has a royalty free license under the following listed patents for the benefit of Manufacturers of the item either for the Government or for use in equipment to be delivered to the Government. (U.S. Patent Nos. 2,833,567; 3,044,163; 3,055,682)

DRY-FILM LUBRICATE AREA "X" IN ACCORDANCE WITH MIL-L-8937. NO OVERSPRAY ALLOWED.

FEDERAL SUPPLY CLASS

4730

DIMENSIONS IN INCHES UNLESS OTHERWISE SPECIFIED : RADIUS OR BREAK ALL CORNERS .005 + .005 -.000. REMOVE ALL BURRS AND SLIVERS. SURFACE ROUGHNESS PER ANSI B46.1-1962 NOT TO EXCEED 125 AA. ALL DIAMETERS WITHIN LENGTH "A" PLUS "L" MUST BE CONCENTRIC WITHIN .005 TIR.

THIS STANDARD TAKES PRECEDENCE OVER DOCUMENTS REFERENCED HEREIN.

THIS IS A DESIGN STANDARD FOR MANUFACTURING PURPOSES, THE ITEM IS ONLY PROCURED AS AN INTEGRAL PART OF ADAPTER ASSEMBLIES.

ANY BENT TUBE DESIGN OF THE ELBOW TO THE LEFT OF PLANE B-B IS ACCEPTABLE PROVIDED DIM'S "P" AND "R", THE MATERIALS SPECIFIED AND THE FABRICATION NOTES OF THIS STANDARD ARE MET.

THE BORE OF THE ELBOW SHALL NOT BE LESS THAN THE I.D. OF THE NIPPLE. OVALITY SHALL NOT EXCEED 7.5 PERCENT OF THE NOMINAL TUBING O.D.

(a) USE "A" DIM. WHEN THE ADJACENT DIA TO THE LEFT OF PLANE B-B IS GREATER THAN "J" DIM. WHEN THE ADJACENT DIA IS EQUAL TO OR LESS THAN "J" DIM, "M" DIM. MAY BE USED IN PLACE OF "A" DIM.

NEXT ASSEMBLY MS27064.

DASH NO.		"A" MIN	B MIN	C		"D" +.005-.000		E		F	
STEEL	ALUM					STEEL	ALUM				
-8C	-8D	.617	1.030	.098	+.004 -.000	.385	.385	.32	± .12	.497	+.005 -.000
-10C	-10D	.654	1.130			.420	.427	.35	± .15	.586	
-12C	-12D	.755	1.240	.128	+.005 -.000	.500	.500			.674	+.008 -.000
-16C	-16D	.831	1.340			.545	.545	.39	± .19	1.001	
-20C	-20D	.881	1.570			.565	.571	.48	± .28	1.255	
-24C	-24D	1.035	1.720			.665	.665	.50	± .30	1.490	

G +.005 -.000	H ±.005	J +.005 -.000	K		L		"M" MIN	N			P ±.035
								STEEL	ALUM		
.426	.530	.616	.020	+.005 -.000	.600	± .015	.583	.345	.345	+.006 -.000	1.266
.526	.625	.706			.650		.620	.440	.440		1.324
.650	.760	.826	.030	±.005	.675	± .025	.720	.560	.560		1.782
.900	1.040	1.150			.730		.796	.828	.828		1.838
1.151	1.275	1.405			.935		.846	1.058	1.058		2.052
1.401	1.550	1.635			.980		1.000	1.253	1.282	+.005 -.000	2.318

R ±.035	S ±.010	"T" MAX	"U" MAX
.423	—	—	—
.375	—	—	—
.468	.625	.900	15° 30'
.505	.670	1.190	10° 30'
.559	.695	1.485	15° 30'
.624	.795	1.750	

APPROVED 2 May 66 REVISED (B) FOR CHANGES SEE SHEETS 1 AND 2.

NOTE: The Government has a royalty free license under the following listed patents for the benefit of Manufacturers of the item either for the Government or for use in equipment to be delivered to the Government. (U.S. Patent Nos. 2,833,567; 3,044,163; 3,055,682)

P A Air Force-II Other Cust Army-AV Navy-As Procurement Specification MIL-F-27272	TITLE (B) ELBOW, NIPPLE END, SWIVEL FLANGE TO HOSE-45° SUPERSEDES	MILITARY STANDARD MS27084 SHEET 2 OF 2
---	--	--