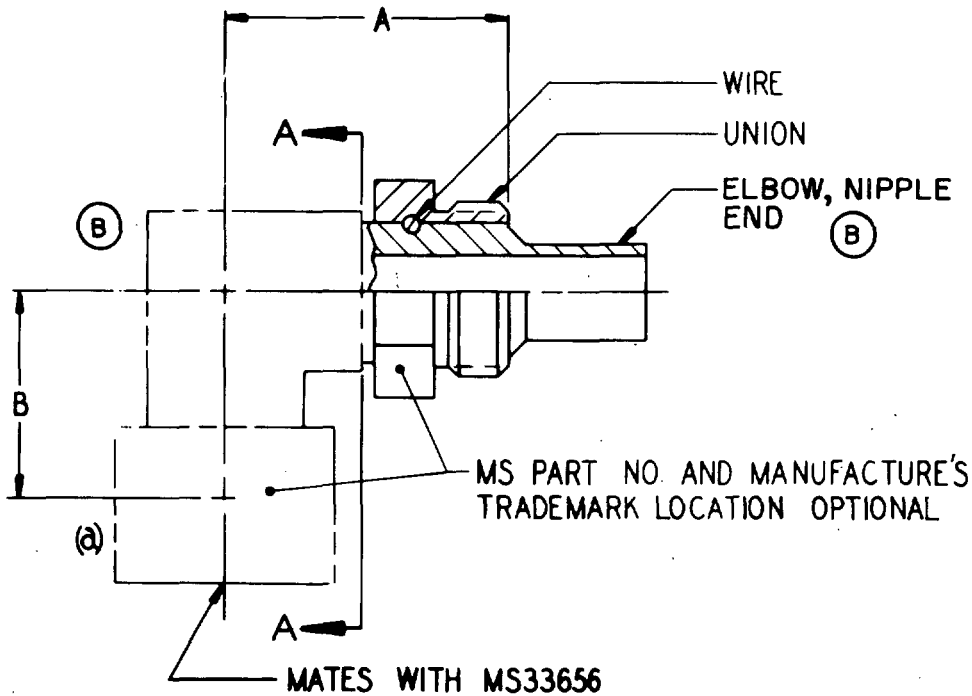


FED SUP CLASS
4730



MS PART NO.	WIRE	(B) UNION NIPPLE	(B) ELBOW, NIPPLE END	A + .020	B ± .020
(b) MS27068-3/-4C(B)	MS27072-4C	MS27071-4C	MS27086-3/-4C	.845	.530
MS27068-4C			MS27086-4C		.580
MS27068-5C	MS27072-5C	MS27071-5C	MS27086-5C	.900	.655
MS27068-6C	MS27072-6C	MS27071-6C	MS27086-6C	.965	.720
MS27068-8C	MS27072-8C	MS27071-8C	MS27086-8C	1.235	.830
MS27068-8			MS27086-8		
(c) MS27068-3C	MS27072-3C	MS27071-3C	MS27086-3C	.795	.530

(B) "A" IS THE DIMENSION BETWEEN THE HOSE END OF THE THREADED SECTION OF THE UNION AND THE CENTERLINE OF THE INSERT.

(B) "B" IS THE DIMENSION BETWEEN THE CENTERLINE OF THE NIPPLE AND THE FREE END OF THE INSERT.

(B) FOR CHANGES SEE SHEETS 1 AND 2.

DA Air Force-II Other Cust Army - AV Navy - AS (B)	TITLE	MILITARY STANDARD
	ELBOW SUB ASSEMBLY, FLARED, 90° FORGED, SWIVEL NUT	MS27068
Procurement Specification MIL-F-27272	SUPERSEDES	SHEET 1 OF 2

Review Activities:
Army - AV
Navy - AS
Air Force - 82

User Activities:
Army - WC, ME, MI

This military standard is approved by the Department of Defense and it is mandatory on all activities herein unless a new engineering and design application and for repetitive use shall be made from this document.

APPROVED 1 Sep 61 Revised (A) 2 May 66 (B) 30 Jun 72

NOTE: The Government has a royalty free license under the following listed patents for the benefit of Manufacturers of the item either for the Government or for use in equipment to be delivered to the Government. (U.S. Patent Nos. 2,833,567; 3,044,163; 3,055,682)

FED. SUP CLASS.
4730

MATERIAL : SUFFIX "C" : CORROSION RESISTING STEEL, SUFFIX "D" : ALUMINUM ALLOY. NO SUFFIX : COMBINATION OF ALUMINUM ALLOY AND CORROSION RESISTING STEEL. SEE MS STANDARDS LISTED ON SHEET 1 FOR MATERIAL SPECIFICATIONS.

CORROSION RESISTING STEEL : DO NOT PASSIVATE. ALUMINUM ALLOY : ANODIZE SPECIFICATION MIL-A-8625, TYPE II, DYE BLUE.

THESE PARTS FOR USE WITH MIL-H-27267 HOSE.

THIS STANDARD TAKES PRECEDENCE OVER DOCUMENTS REFERENCED HEREIN.

REFERENCED DOCUMENTS SHALL BE OF THE ISSUE IN EFFECT ON DATE OF INVITATION FOR BID.

ANY FORGED DESIGN OF ADAPTER COMPONENTS TO THE LEFT OF PLANE A-A IS ACCEPTABLE PROVIDED : DIM'S "A" AND "B" THE MATERIALS SPECIFIED, THE FABRICATION NOTES OF THIS STANDARD AND REQUIREMENTS OF THE PROCUREMENT SPECIFICATION ARE MET.

- (a) IF REQUIRED, LOCKWIRE HOLES TO BE DRILLED IN ACCORDANCE WITH AS1043 AND SUFFIX "L" ADDED TO PART NUMBER. EXAMPLE : MS27068-8CL.
- (b) SWIVEL NUT AND CONE SEAT OF ELBOW SHALL MATE WITH MS33656-3 FITTING. THE REMAINING PORTION OF THE ASSEMBLY SHALL MATE WITH MIL-H-27267-4 HOSE.
- (c) MS27068-3C INACTIVE FOR DESIGN AFTER 2 MAY 1966 USE ONLY FOR REPLACEMENT OF IDENTICAL ITEMS IN EXISTING MILITARY EQUIPMENT. USE MS27068-3/4C FOR DESIGN.

NEXT ASSEMBLY MS27060

User Activities:
Army - WC, MC, MI

Review Activities:
Army - AV
Navy - AS
Air Force - 82

This military standard is approved by the Department of Defense and is mandatory on all activities. Variation for all new engineering and design applications and for repetitive use shall be made from this document.

APPROVED 1 Sep 61 Revised (B) FOR CHANGES SEE SHEETS 1 AND 2.

NOTE: The Government has a royalty free license under the following listed patents for the benefit of Manufacturers of the item either for the Government or for use in equipment to be delivered to the Government. (U.S. Patent Nos. 2,833,567; 3,044,163; 3,055,682)

P.A. Air Force-11 Other Cust Army - AV (B) Navy - AS Procurement Specification MIL-F-27272	TITLE ELBOW SUB ASSEMBLY, FLARED, 90° FORGED, SWIVEL NUT	MILITARY STANDARD MS27068
	SUPERSEDES:	SHEET 2 OF 2