

INCH-POUND

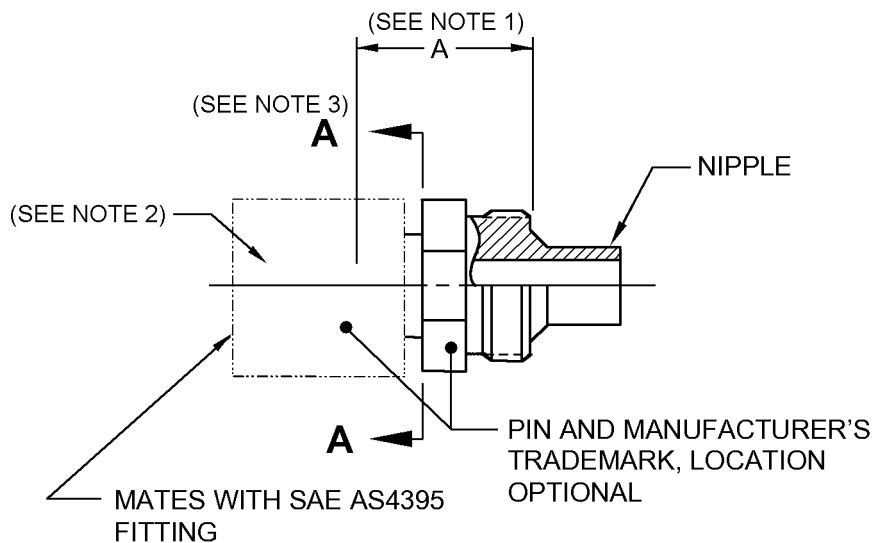
MS27061C
 24 September 2003
 SUPERSEDING
 MS27061B
 30 June 1972

DETAIL SPECIFICATION SHEET

NIPPLE SUBASSEMBLY, FLARED, STRAIGHT - WITH SWIVEL NUT

This specification is approved for use by all Departments
 and Agencies of the Department of Defense.

The requirements for acquiring the product described herein
 shall consist of this specification and MIL-DTL-27272.



NOTES:

1. Dimension A is measured between the hose end of the threaded section of the nipple and the free end of the insert at its centerline.
2. If required, lockwire holes to be drilled in accordance with SAE AS1043 and suffix L added to PIN (e.g., MS27061-8CL).
3. Any design of subassembly components to the left of plane A-A is acceptable provided that the requirements of this specification sheet and the procurement specification are met.

FIGURE 1. Nipple subassembly illustration.

MS27061C

REQUIREMENTS:

Intended use. This part is a component of MS27053.

Identification of product. The Part or Identifying Number (PIN) and the manufacturer's trademark shall be permanently marked on the assembly. The PIN for this part shall be as specified in table I (e.g., MS27061-4C).

Dimensions. Dimensions are in inches.

Material. PIN suffix C: Corrosion-resistant steel.

PIN suffix D. Aluminum alloy.

No PIN suffix. Combination of aluminum alloy and corrosion-resistant steel.

See applicable specification sheet for other components identified in table I for their material requirements.

Nipple subassembly illustration. See figure 1.

Order of precedence. This specification takes precedence over the documents referenced herein. Unless otherwise specified, referenced documents shall be of the issue in effect on the date of solicitation.

TABLE I. Nipple subassembly composition.

PIN	Nipple PIN	A <u>1</u> / ref
MS27061	MS27075	
-3/-4C <u>2</u> /	-3/-4C	.655
-4C	-4C	.670
-5C	-5C	.700
-6C	-6C	.745
-8C	-8C	.860
-8	-8D	
-10C	-10C	.955
-10	-10D	
-12C	-12C	1.015
-12	-12D	
-16C	-16C	1.155
-16	-16D	
-20C	-20C	1.280
-20	-20D	
-24C	-24C	1.475
-24	-24D	

1/ Dimension A is measured between the hose end of the threaded section of the nipple and the free end of the insert at its centerline.

2/ Swivel nut and sealing surface of this nipple subassembly shall mate with SAE AS4395-3 fitting. The remaining portion of this subassembly shall mate with M27267-4 hose.

MS27061C

Changes from previous issue. Marginal notations are not used in this revision to identify changes with respect to the previous issue, due to the extent of the changes.

CONCLUDING MATERIAL

Custodians:

Army - AV
Navy - AS
Air Force - 99
DLA - CC

Preparing activity:

DLA - CC

(Project 4730-0868-027)

Review activities:

Army - AR, AT, MI
Navy - MC, SA, SH
Air Force - 71