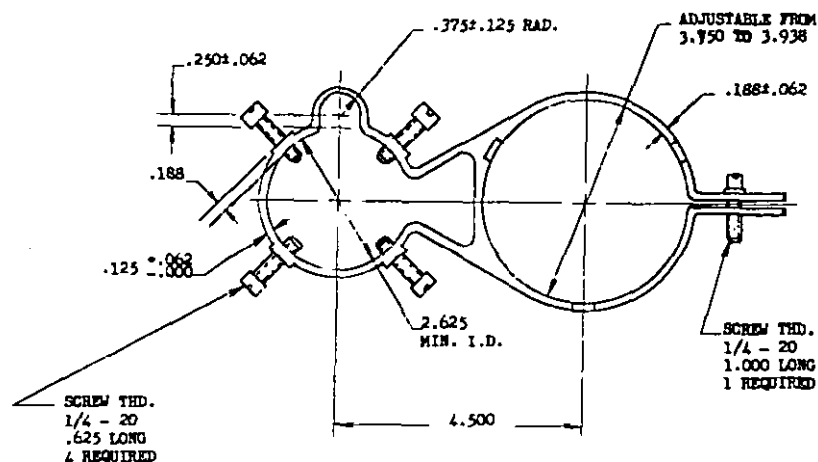
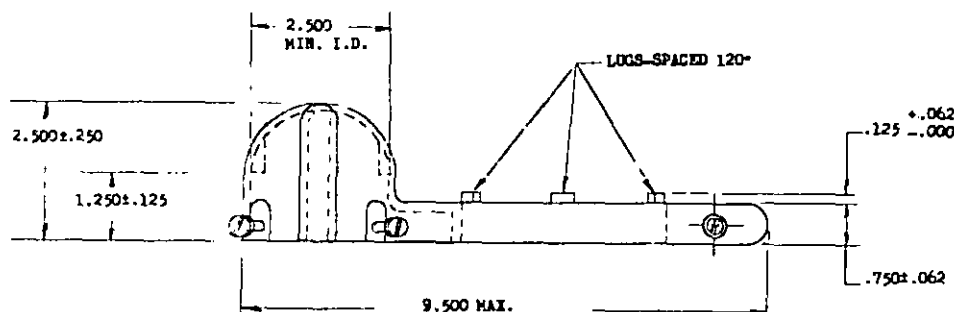


NOTICE—When Government drawings, specifications, or other data are used for any purpose other than in connection with a definitely related Government procurement obligation, the United States Government thereby incurs no responsibility, nor any obligation whatsoever; and the fact that the Government may have formulated, limited, or in any way supplied the said drawings, specifications, or other data is not to be regarded by implication or otherwise as in any manner endorsing the holder or any other person or corporation, or conveying any right, or permission to manufacture, use, or sell any patented invention that may in any way be related thereto.



MS PART NO.  
MS27037-1

DIMENSIONS IN INCHES  
UNLESS OTHERWISE SPECIFIED, TOLERANCES: DECIMALS ±0.016.

**MATERIAL: CAST ALUMINUM.**

⑧ SCREW ENDS SHALL BE ROUNDED.

FOR DESIGN FEATURE PURPOSES, THIS STANDARD TAKES PRECEDENCE OVER DOCUMENTS REFERENCED HEREIN.  
REFERENCED DOCUMENTS SHALL BE OF THE ISSUE IN EFFECT ON DATE OF INVITATIONS FOR BID.

APPROVED 8 Jun 61 REVISED A<sup>13</sup> Oct 61 (8) 7 Dec 62

This standard has been approved by the Department of Defense and is mandatory ~~on all activities.~~  
on all activities. All other military activities are required  
to employ this standard where suitable.

P.A. Air Force - AFSC	TITLE	MILITARY STANDARD
Other Cust Army - CE Navy - Wep	CLAMP ASSEMBLY - MEDIUM INTENSITY RUNWAY LIGHT	MS 27037
PROCUREMENT SPECIFICATION MIL-L-7082B	SUPERSEDES:	SHEET 1 OF 1