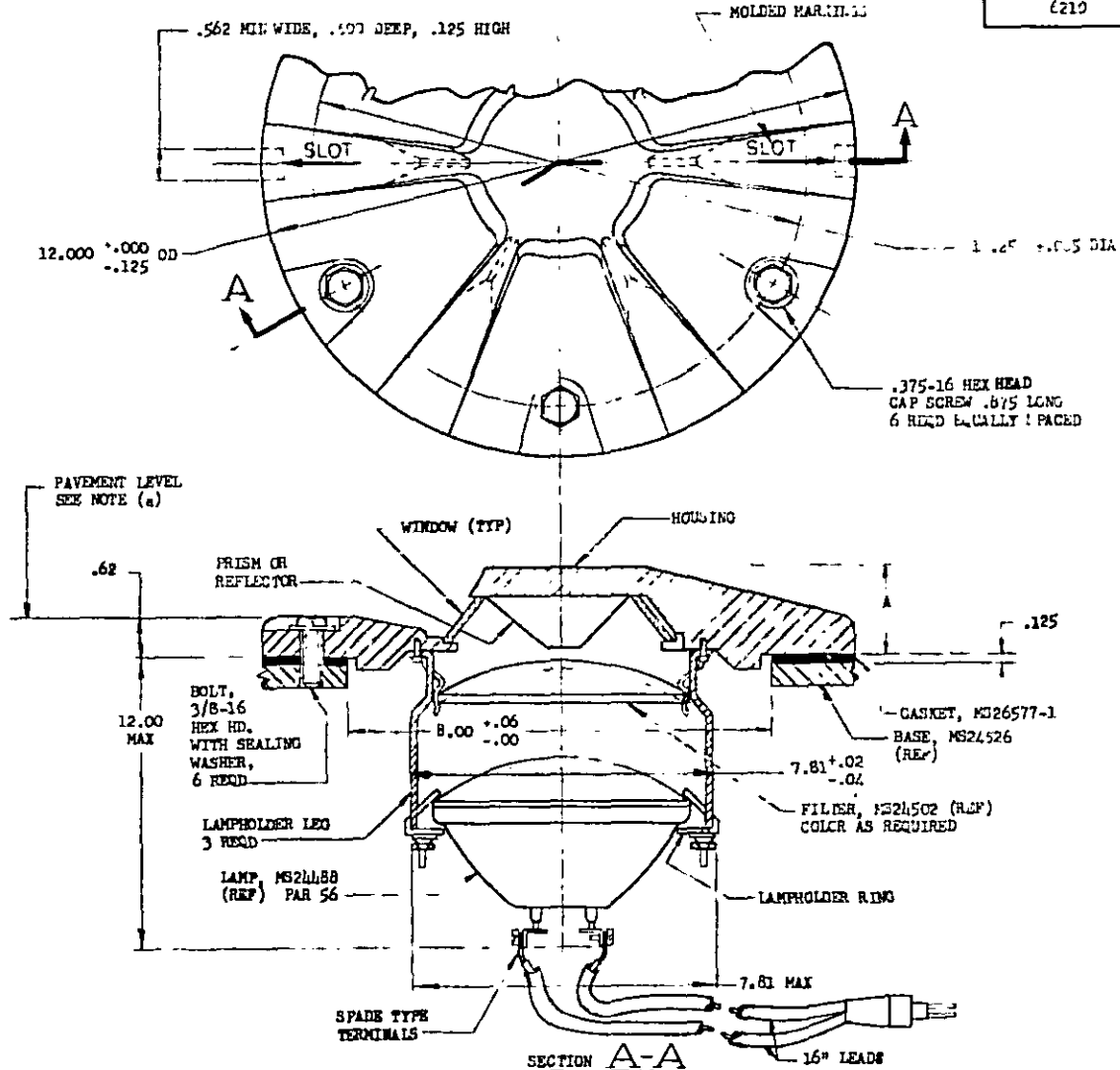


FED. SUP CLASS  
6210

CHARACTERISTICS WITH MS24488-4 LAMP

DASH NO.	CLASS	TYPE	LIGHT WITHOUT FILTER			ELEVATION ANGLE DEGREES
			TRANSFORMER 30-45 WATT	A MAX (INCHES)	LAMP	
-B3	B3	SYMMETRICAL	MS27289-1	1.62	MS24488-4	1.5 ±.5
-BB3	BB3	SYMMETRICAL	MS27289-1	1.12	MS24488-4	1.5 ±.5

(a) SEE PROJECTION TABLE ON SHEET 2.

## INTENSITY DISTRIBUTION:

CLASS B3 LIGHTS: THE DESIGN GOAL SHALL BE A SYMMETRICAL DISTRIBUTION THROUGHOUT THE ENTIRE 360-DEGREE HORIZONTAL AREA AROUND THE UNIT. THE MINIMUM INTENSITY THROUGH ANY VERTICAL PLANE CONTAINING THE AXIS OF THE LIGHT SHALL BE 25 CANDELAS BETWEEN VERTICAL ANGLES OF 1 AND 3 DEGREES, 20 CANDELAS BETWEEN 0 AND 6 DEGREES, 12 CANDELAS BETWEEN -1 AND +10 DEGREES, AND 6 CANDELAS BETWEEN -2 AND +20 DEGREES WHEN USED WITH MS24488-4 LAMP.

CLASS BB3 LIGHTS: THE DESIGN GOAL SHALL BE A SYMMETRICAL DISTRIBUTION THROUGHOUT THE ENTIRE 360-DEGREE HORIZONTAL AREA AROUND THE UNIT. THE MINIMUM INTENSITY THROUGH ANY VERTICAL PLANE CONTAINING THE AXIS OF THE LIGHT SHALL BE 10 CANDELAS BETWEEN VERTICAL ANGLES OF 1 AND 3 DEGREES, 7 CANDELAS BETWEEN 0 AND 6 DEGREES, 4 CANDELAS BETWEEN -1 AND +10 DEGREES, AND 2 CANDELAS BETWEEN -2 AND +20 DEGREES WHEN USED WITH MS24488-4 LAMP.

DIMENSIONS IN INCHES. UNLESS OTHERWISE SPECIFIED, TOLERANCES: DECIMALS ±.016, ANGLES ±1°.

(B)

ENTIRE STANDARD REVISED.

FOR DESIGN FEATURE PURPOSES, THIS STANDARD TAKES PRECEDENCE OVER PROCUREMENT DOCUMENTS REFERENCED HEREIN. REFERENCED DOCUMENTS SHALL BE OF THE ISSUE IN EFFECT ON DATE OF INVITATIONS FOR BID.

P.A. USAP - 11	TITLE	MILITARY STANDARD
Other Cost	LIGHT, MARKER, AIRPORT, SEMI-FLUSH, BASE MOUNTED, OMNIDIRECTIONAL	MS27033(ASG)
Procurement Specification MIL-L-26202	SUPSEDES: MS24488(USAP)	SHEET 1 OF 2

FED. SUP CLASS  
6210Reviewer and User Activities:  
USAF - 11  
Navy - 4P

PROJECTION VALUES			
CLASS OF LIGHT	MAX HEIGHT ABOVE PAVEMENT INCHES	MAX SLOPE OF PROJECTING PART OF LIGHT IN VERTICAL PLANES PARALLEL TO RUNWAY DEGREES	MAX SLOPE OF PROJECTING PART OF LIGHT IN ALL OTHER VERTICAL PLANES DEGREES
B3	1	15	20
BB3	1/2	7 1/2	10

MATERIAL: HOUSING; DUCTILE IRON.  
ALL OTHER PARTS; ALLOY STEEL-CHROME 18 TO 20%, NICKEL 8 TO 12%, CARBON .08% MAX.

This standard has been approved by the ASD (Department of the Air Force) and the Department of the Navy and is mandatory for use by their activity. All other military activities are required to employ this standard where suitable.

P.A. USAF - 11 Other Cust Navy - 4P	TITLE  LIGHT, MARKER, AIRPORT, SEMIFLUSH, BASE MOUNTED, OMNIDIRECTIONAL	MILITARY STANDARD <b>MS27033(ASG)</b>
PROCUREMENT SPECIFICATION MIL-L-26202	SUPERSEDES: MS24511(USAF)	SHEET 2 OF