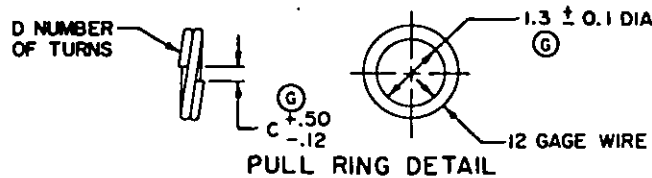
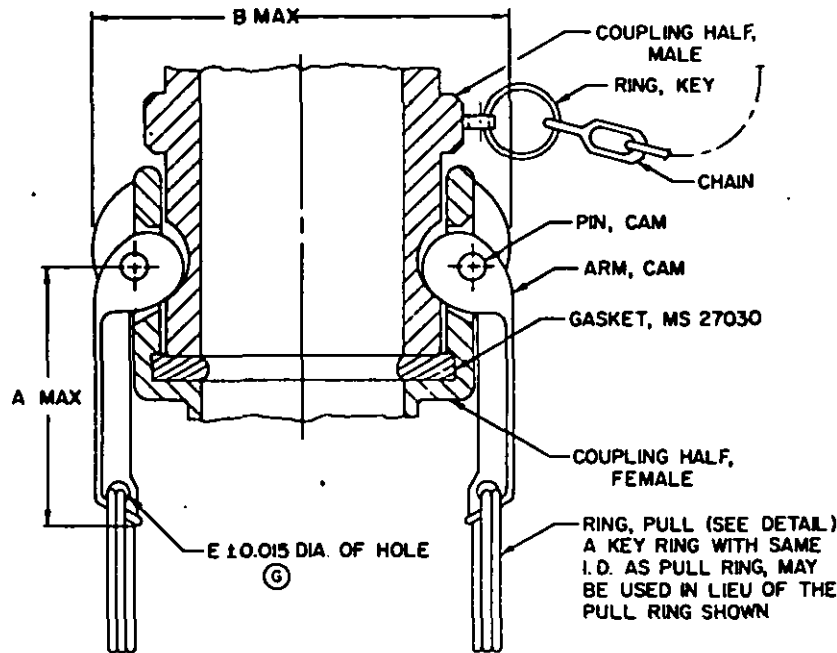


FED. SUP CLASS
4730

REVIEW ACTIVITIES:
ARMY-GL, SM
NAVY-MC, SH
AIR FORCE-BZ

APPROVED 23 SEPTEMBER 1960 REVISED 'A' 28 JUNE 1962 (B) 25 SEPT 1963 (C) 4 AUG 1966 (D) 3 MARCH 1970 (E) 19 AUGUST 1975 (F) 15 JUN 82 (G) 4 OCTOBER 1985



NOM. SIZE	DIMENSIONS					GASKET REQUIRED
	A	B	C	D	E	
1/2	1.50	2.13	0.38	2	0.156	MS27030-1
3/4	1.50	2.19	0.38	2	0.156	MS27030-2
1	1.75	2.55	0.38	2	0.156	MS27030-3
1-1/4	3.00	3.00	0.38	2	0.156	MS27030-4
1-1/2	3.00	3.38	0.38	2	0.156	MS27030-5
2	3.00	3.75	0.38	2	0.156	MS27030-6
2-1/2	3.00	4.38	0.38	2	0.156	MS27030-7
3	3.25	5.25	0.25	3	0.250	MS27030-8
4	3.25	6.25	0.25	3	0.250	MS27030-9
6	4.25	8.63	0.25	3	0.250	MS27030-10

TYPICAL ASSEMBLY, COUPLING HALF, MALE & FEMALE

(G) DENOTES CHANGES

NOTES:

1. Unless otherwise specified, dimensions are in inches.
2. For design feature purposes, this standard takes precedence over procurement documents referenced herein.
3. Referenced documents shall be of the issue in effect on date of invitations for bids, or request for proposal.
4. Certain provisions (dimensions) of this document are the subject of international standardization agreement (STANAG No. 2761 and QSTAG 240). When change notice, revision, or cancellation of this document is proposed which will affect or violate the international agreement concerned, the preparing activity shall take appropriate reconciliation action through international standardization channels, including standardization offices, if required.
5. Key ring and chain are shown for information purposes only and are not required to be furnished with male cam-lock coupling half. THIS IS A DESIGN STANDARD AND SHALL NOT BE USED AS A PART NUMBER.

P.A. Other Cust ME YD 99	INTERNATIONAL INTEREST STANAG NO. 2761 QSTAG 240	TITLE COUPLING ASSEMBLY, QUICK DISCONNECT, CAM-LOCKING TYPE.	MILITARY STANDARD MS 27019
PROCUREMENT SPECIFICATIONS MIL-C-27487			SHEET 1 OF 3

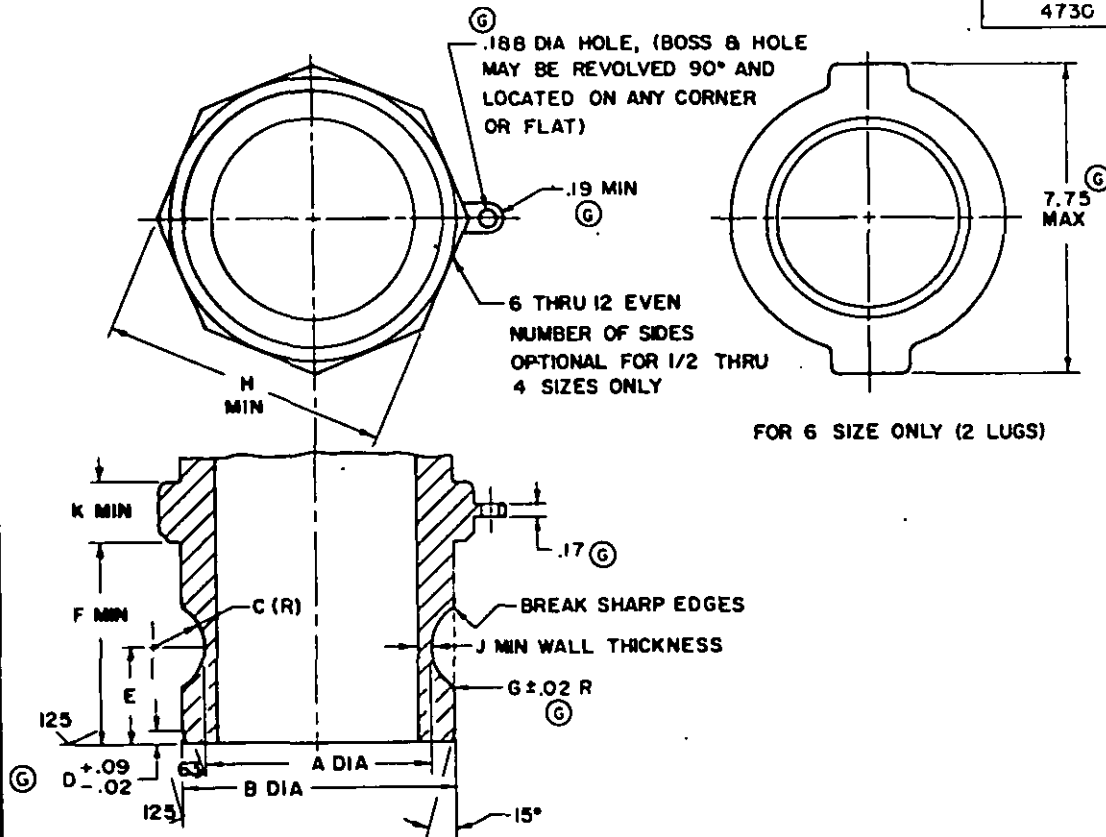
DD FORM 672-1

PREVIOUS EDITIONS OF THIS FORM ARE OBSOLETE.

4730-0469

DISTRIBUTION STATEMENT A. Approved for public release; distribution is unlimited.

This military standard is approved for use by all Departments and Agencies of the Department of Defense. Selection for all new engineering and design applications and for repetitive use shall be made from this document when applicable.

FED. SUP CLASS
473C

NOM. SIZE	DIMENSIONS (G)									
	A	B	C	D	E	F	G	H*	J	K
1/2	1.035	1.264	.378	0.09	.471	1.00	0.06		.10	.58
	1.030	1.259	.372		.465					
3/4	1.035	1.264	.378	0.09	.471	1.00	0.06		.10	.58
	1.030	1.259	.372		.465					
1	1.144	1.446	.378	0.13	.565	1.32	0.09		.10	.58
	1.139	1.441	.372		.559					
1-1/4	1.388	1.792	.441	0.13	.690	1.56	0.12		.13	.58
	1.383	1.787	.435		.684					
1-1/2	1.690	2.105	.441	0.13	.690	1.62	0.12		.13	.58
	1.685	2.100	.435		.684					
2	2.065	2.484	.441	0.13	.848	1.87	0.12		.13	.58
	2.060	2.479	.435		.842					
2-1/2	2.545	2.985	.441	0.19	.848	1.94	0.12		.16	.75
	2.540	2.980	.435		.842					
3	3.202	3.604	.503	0.19	.895	2.00	0.12		.16	.75
	3.197	3.599	.497		.889					
4	4.307	4.708	.503	0.22	.895	2.07	0.12		.22	1.00
	4.302	4.703	.497		.889					
6	6.362	6.929	.659	0.22	.963	2.25	0.12		.22	NA
	6.357	6.924	.653		.957					

NOTES:

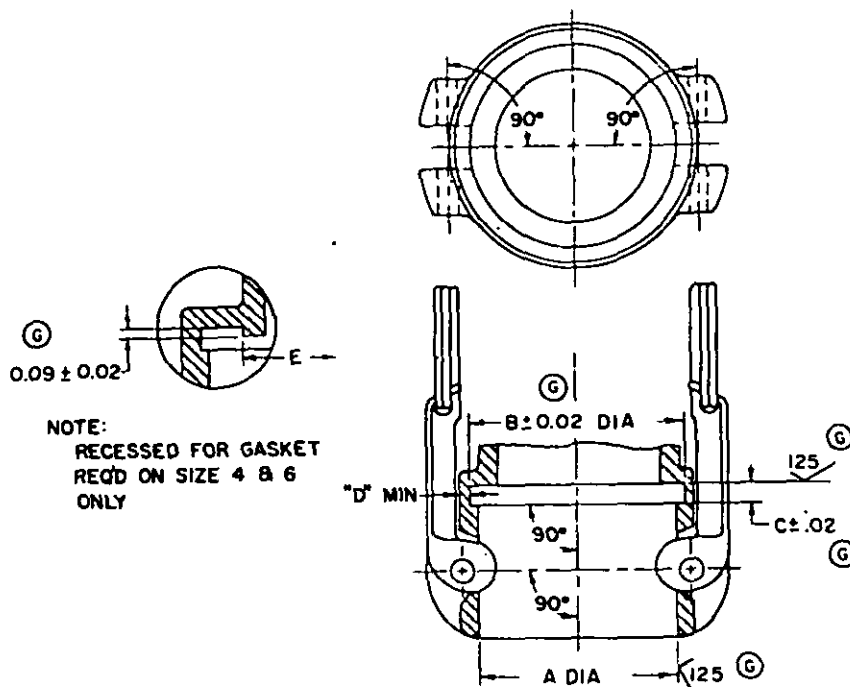
COUPLING HALF, MALE

1. Unless otherwise specified, dimensions are in inches.
2. * The across the flats dimension, H, shall be not less than the male coupling outside diameter, B.
3. Tolerances: Unless otherwise specified: Decimals 2 places 0.02, 3 places 0.005; degrees $\pm 1/2$.

THIS IS A DESIGN STANDARD AND SHALL NOT BE USED AS A PART NUMBER

APPROVED 23 SEPTEMBER 1960 REVISED (G) FOR CHANGES SEE SHEETS 1, 2 AND 3

P.A. Other Cust	ME YD 99	INTERNATIONAL INTEREST STANAG NO. 2761 QSTAG 240	TITLE COUPLING ASSEMBLY, QUICK DISCONNECT, CAM-LOCKING TYPE.	MILITARY STANDARD MS 27019
PROCUREMENT SPECIFICATIONS MIL-C-27487			SUPERSEDES:	SHEET 2 OF 3

FED. SUP CLASS
4730

NOM. SIZE	DIMENSIONS (G)					GASKET REQUIRED
	A	B	C	D	E	
1/2	1.276	1.422	.250	.094		MS27030-1
3/4	1.276	1.422	.250	.094		MS27030-2
1	1.466	1.594	.281	.094		MS27030-3
1-1/4	1.812	2.000	.281	.125		MS27030-4
1-1/2	2.125	2.250	.281	.125		MS27030-5
2	2.510	2.688	.281	.125		MS27030-6
2-1/2	3.011	3.188	.281	.156		MS27030-7
3	3.630	3.781	.281	.156		MS27030-8
4	4.734	4.938	.281	.219	3.906	MS27030-9
6	6.950	7.938	.281	.219	5.906	MS27030-10

COUPLING HALF, FEMALE

NOTES:

1. Unless otherwise specified, dimensions are in inches.
2. Tolerances: Unless otherwise specified: decimals $\pm .005$, degrees $\pm 1/2^\circ$.

(G)

THIS IS A DESIGN STANDARD AND SHALL NOT BE USED AS A PART NUMBER

P.A. ME Other. Com YD 99	INTERNATIONAL INTEREST STAGNO NO. 2761 OSTAG 240	TITLE COUPLING ASSEMBLY, QUICK DISCONNECT, CAM-LOCKING TYPE.	MILITARY STANDARD MS 27019
PROCUREMENT SPECIFICATIONS: MIL-C-27487		SUPERSEDES:	SHEET 3 OF 3

DD FORM 672-1
1 SEP 57

PREVIOUS EDITIONS OF THIS FORM ARE OBSOLETE.

APPROVED 23 SEPTEMBER 1960 REVISED (G) FOR CHANGES SEE SHEETS 1, 2 AND 3