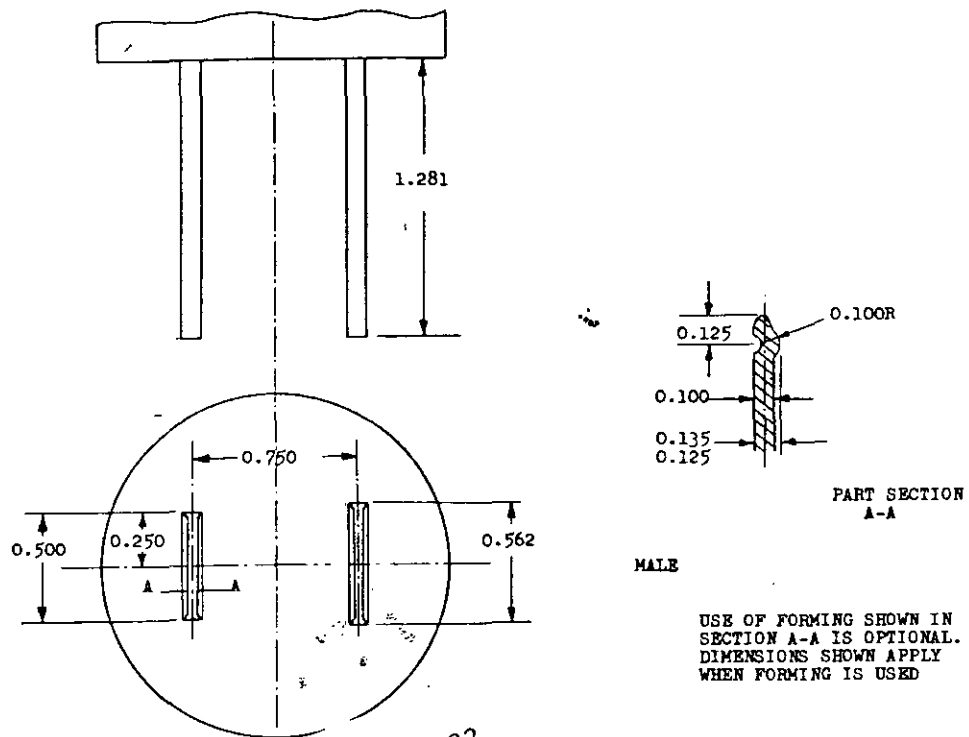


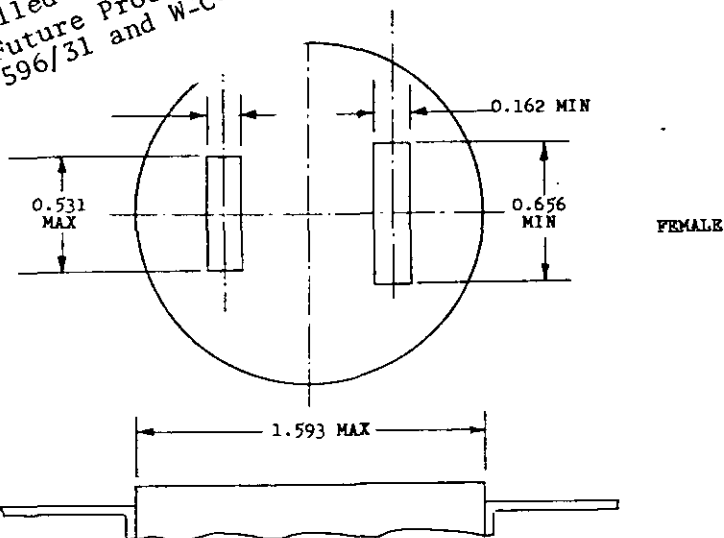
NOTICE.—When Government drawings, specifications, or other data are used for any purpose other than in connection with a definitely related Government procurement operation, the United States Government thereby incurs no responsibility, nor any obligation whatsoever; and the fact that the Government may have formulated, furnished, or in any way supplied the said drawings, specifications, or other data is not to be regarded by implication or otherwise as in any manner licensing the holder or any other person or corporation, or conveying any rights or permission to manufacture, use, or sell any patented invention that may in any way be related thereto.

This military standard is approved by the Department of Defense and is mandatory on all activities. Selection for all new engineering and design applications and for repetitive use shall be made from this document.

FED. SUP CLASS
5935



Ⓐ Cancelled after 8 April 1982
For Future Procurement use
W-C-596/31 and W-C-596/32



1. THE CONFIGURATION AND CRITICAL DIMENSIONS NECESSARY FOR INTERCHANGEABILITY AND MATING OF THE PLUG AND RECEPTACLE ARE THE SAME AS THOSE DESCRIBED IN AMERICAN STANDARD C73.1-1957.
2. ALL DIMENSIONS IN INCHES.
3. THIS IS A DESIGN STANDARD. NOT TO BE USED AS A PART NUMBER.
4. UNTOLERANCED DECIMAL DIMENSIONS SHALL BE SUBJECT TO A PLUS OR MINUS 0.005 INCH TOLERANCE.

P.A.	CE	TITLE	MILITARY STANDARD
Other Cust	ARDC DOCKS	CONNECTOR, PLUG, ELECTRICAL AND CONNECTOR, RECEPTACLE, ELECTRICAL, 2 POLE, 2 WIRE, 30 AMPERE, 250 VOLTS	MS 27013
PROCUREMENT SPECIFICATION W-C-596, STYLE R	SUPERSEDES:	SHEET 1 OF 1	

DD FORM 672-1 (Coordinated)
1 SEP 57

PREVIOUS EDITIONS OF THIS FORM ARE OBSOLETE.

APPROVED 30 AUGUST 1960 REVISED Ⓐ 8 APRIL 1982