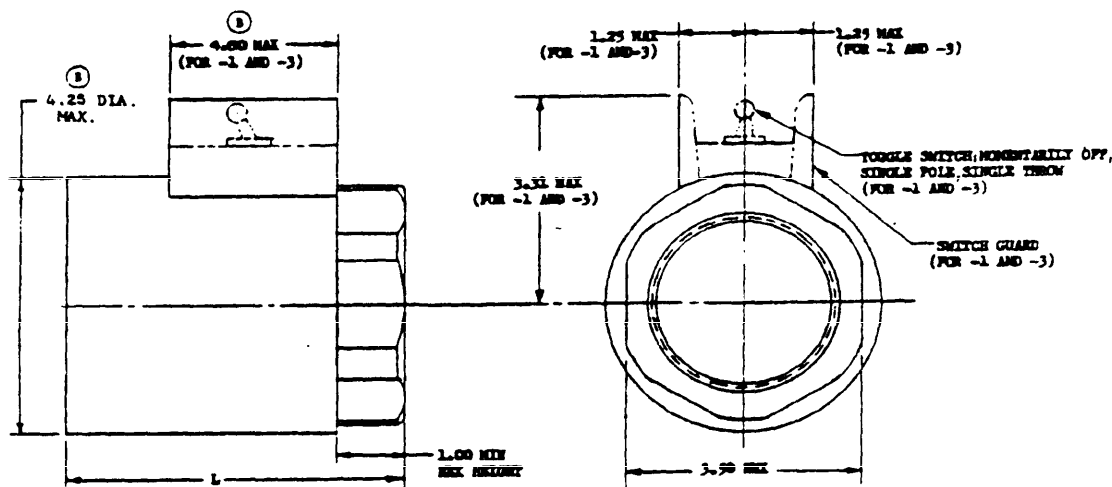
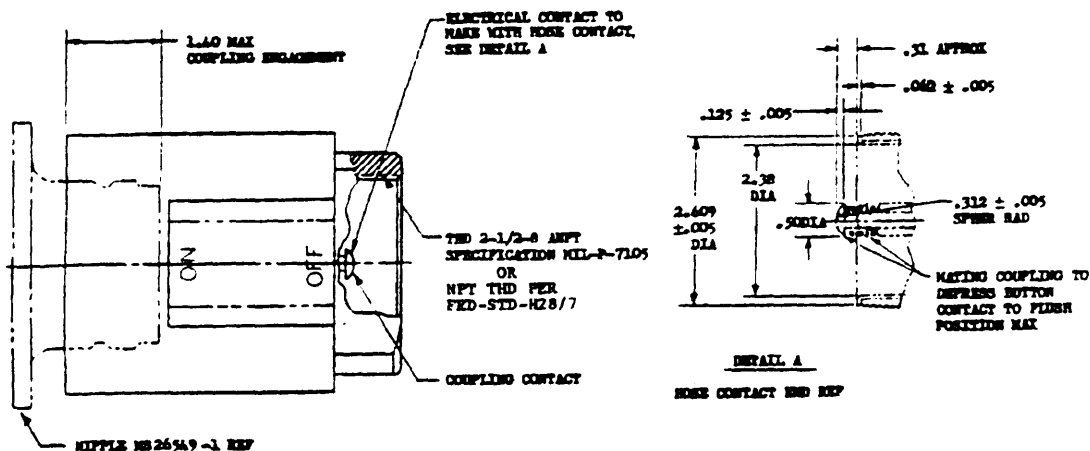


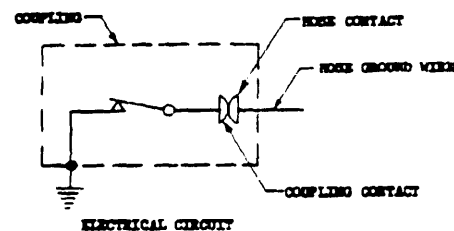
FED. SUP CLASS
4730

MS PART NO.	FILE	DESCRIPTION	L MAX
MS26550 -1		AL ALLOY BODY, WITH SWITCH	5.00
MS26550 -2		AL ALLOY BODY, WITHOUT SWITCH	3.50
MS26550 -3		BRONZE BODY, WITH SWITCH	5.00
MS26550 -4		BRONZE BODY, WITHOUT SWITCH	3.50

NOTES:

- DIMENSIONS ARE IN INCHES.
- UNLESS OTHERWISE SPECIFIED, TOLERANCES: ± .02.
- REFERENCED DOCUMENTS SHALL BE OF THE ISSUE IN EFFECT ON DATE OF INVITATIONS FOR BIDS OR REQUEST FOR PROPOSAL, EXCEPT THAT REFERENCED ADOPTED INDUSTRY DOCUMENTS SHALL GIVE THE DATE OF THE ISSUE ADOPTED.
- FOR DESIGN FEATURE PURPOSES, THIS STANDARD TAKES PRECEDENCE OVER PROCUREMENT DOCUMENTS REFERENCED HEREIN.

(B) DENOTES CHANGES



AMSC N/A

DISTRIBUTION STATEMENT A Approved for public release; distribution unlimited

P. A. NAVY-SH
Other CostINTERNATIONAL
INTEREST

TITLE

COUPLING, QUICK DISCONNECT, 2-1/2 INCH
PRESSURE FUEL SERVICING, NOZZLE TO HOSE

MILITARY STANDARD

MS26550(SH)

PROCUREMENT SPECIFICATION
MIL-C-19179

SUPERSEDES:

SHEET 1 OF

DD FORM 672-1 (LIMITED COORDINATION)

PREVIOUS EDITIONS OF THIS FORM ARE OBSOLETE

PROJECT NO 4730-N807

This military standard is approved for use by the Naval Sea Systems Command, Department of the Navy and is available for use by all Departments and Agencies of the Department of Defense.

APPROVED 17 MARCH 1958 REVISED (A) 20 NOV 81 (B) 29 OCT 86