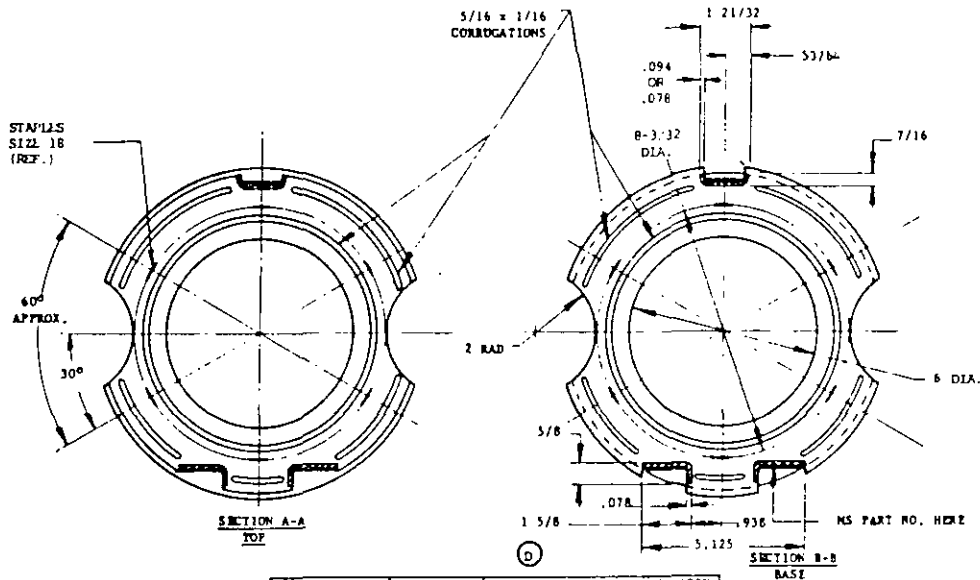
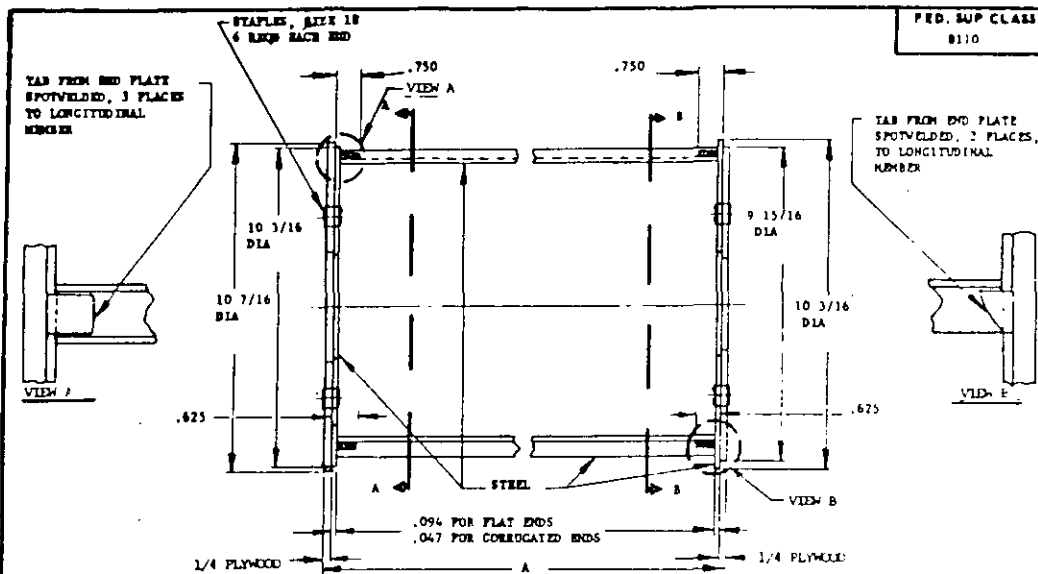


Distribution Statement A. Approved for public release; distribution is unlimited.

This military standard is mandatory for use by all departments and agencies of the Department of Defense. Selection for all new engineering and design applications and for repetitive use shall be made from this document.

REVISIONS: 87, 84, 86

USER: MC, SM, 71



(a)		FOR USE WITH CONTAINER ASSY	
MS PART NO.	A	MS PART NO.	CAPACITY-GAL
MS26502-1	12-23/32	MS27684-2	4

**NOTE:**

MATERIAL: STEEL, QQ-S-698, COLD ROLLED, TEMPER NO. 3 OR 4, DULL FINISH OR SAE 1015.  
 PLYWOOD, M4-P-530 AS FOLLOWS: CS-35, TYPE 111, GRADE 3-4; PS-1, STANDARD INTERIOR.  
 FINISH: ONE COAT ENAMEL, TT-E-485, ENTIRE ASSEMBLY. REMOVE ALL BURRS AND SHARP EDGES.  
 DIMENSIONS IN INCHES, UNLESS OTHERWISE SPECIFIED. TOLERANCES: FRACTIONS  $\pm 1/32$ , DECIMALS  $\pm .015$ .

(a) FOR LOADS UP TO AND INCLUDING 25 LB NET.

NOTE: Plan view dimensions shown in Section B-B apply also to Section A-A.

**(E) CANCELLED - No superseding standard.**

P.A. AIR FORCE - 69

Other Code

AWT - CL

NAVY - AS

AIR FORCE - 69

TITLE

INSERT, METAL SHIPPING CONTAINER, CRATE STYLE

PROCUREMENT SPECIFICATION

MS26502

SUPERSEDES

MS26502 REVISION C

MILITARY STANDARD

MS 26502

SHEET

OF

DD FORM 672-1 (Coordinated)

CONTAINS NO COPY OF THIS DOCUMENT

U.S. GOVERNMENT PRINTING OFFICE: 1953 716 158 100

7 APR 87

11 APR 87

10 JUN 86

12 JUL 84

19 JUN 82

4

REVISED

11 JUL 81

APPROVED