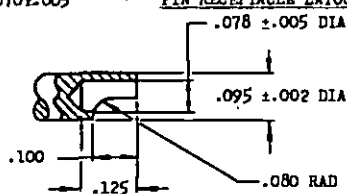
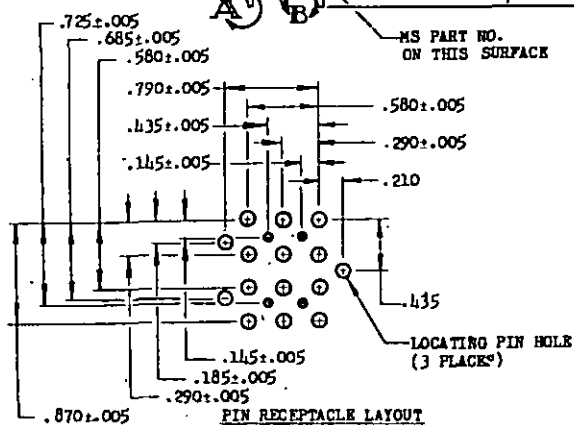
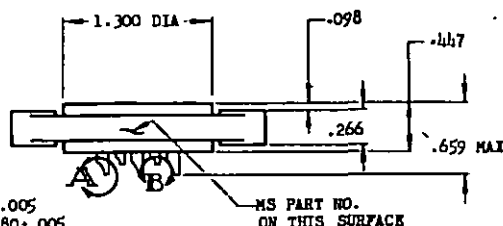
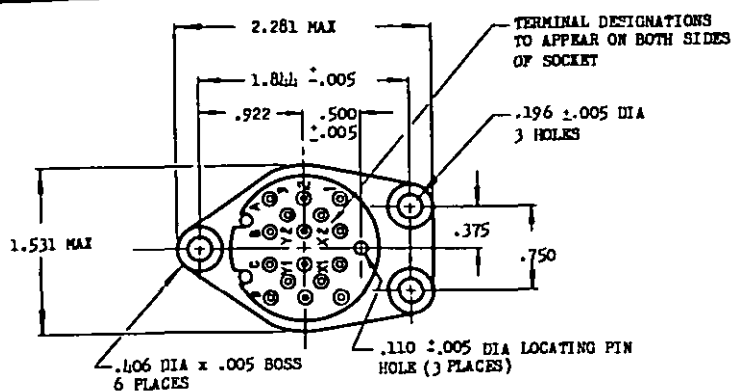
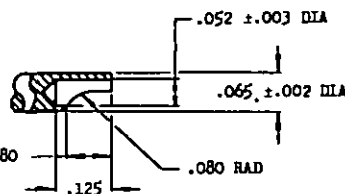


NOTICE—When Government drawings, specifications, or other data are used for any purpose other than in connection with a definitely related Government procurement operation, the United States Government thereby incurs no responsibility, nor any obligation whatsoever, and the fact that the Government may have furnished, furnished, or in any way supplied the said drawings, specifications, or other data is not to be regarded by implication or otherwise as in any manner licensing the holder or any other person or corporation, or conveying any rights or permission to manufacture, use, or sell any patented invention that may in any way be claimed therein.

This standard has been approved by the Bureau (Department of the Navy) and the Department of the USAF and is mandatory for use by their activity. All other activity are required to employ this standard where suitable.



DETAIL A



DETAIL B

(A) INSERTION AND WITHDRAWAL FORCE:
MEASURED WITH:

.0390⁺.0001
-.0000 DIA PIN

1 OZ MIN

.0615⁺.0001
-.0000 DIA PIN

2 OZ MIN

(B) VIBRATION, MIL-STD-202, METHOD 204, CONDITION B,
WITH MS25461 INSERTED

10 G, 10 TO 1500 CPS

(C) CONTACT TABS, PARA. 3.8, MIL-S-12883

NOT APPLICABLE

(D) AMBIENT TEMPERATURE RANGE

-65°C TO +120°C

(E) PIN ENTRY

PARA. 3.3.1.2, MIE-C-5015

(F) DIELECTRIC, MIN, WITHOUT MATING RELAY ENGAGED:

2500 VRMS

SEA LEVEL

500 VRMS

ALTITUDE (80,000 FT)

MS25461

(G) MATING RELAY

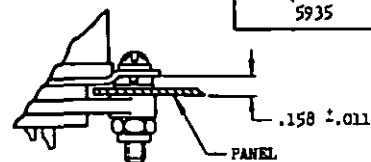
MATERIAL: BODY, MIL-M-19833, TYPE GHI-30P.

DIMENSIONS IN INCHES. UNLESS OTHERWISE SPECIFIED, TOLERANCES: DECIMALS ±.010.

(A) ENTIRE STANDARD REVISED.

FOR DESIGN FEATURE PURPOSES, THIS STANDARD TAKES PRECEDENCE OVER PROCUREMENT DOCUMENTS REFERENCED HEREIN.
REFERENCED DOCUMENTS SHALL BE OF THE ISSUE IN EFFECT ON DATE OF INVITATIONS FOR BID.

P.A. Navy - Wep Other Cust USAF - SGEE	TITLE SOCKET, RELAY, ELECTRICAL, 16 CONTACTS, 10 AMP.	MILITARY STANDARD MS25462(ASG)
PROCUREMENT SPECIFICATION MIL-S-12883	SUPERSEDES:	
		SHEET 1 OF 1



BOTTOM MOUNTED

USE WASHERS SUPPLIED WITH MS25332-1
TO ACCOMPLISH THE INDICATED SPACING

