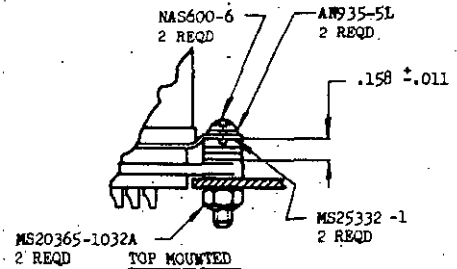
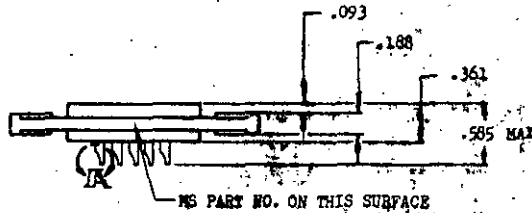
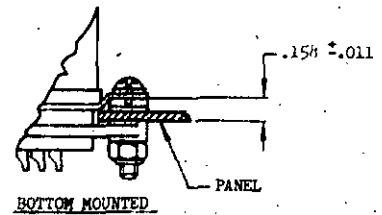
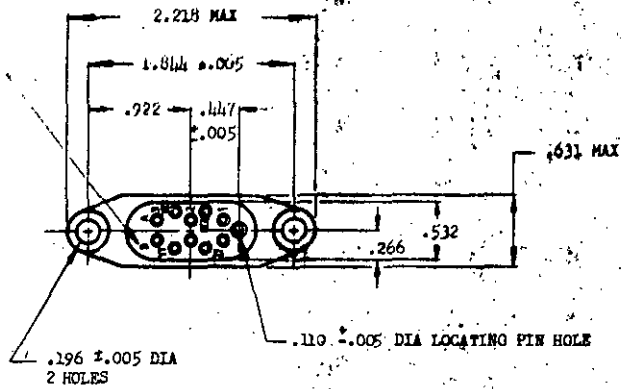


NOTICE—When Government drawings, specifications, or other data are used for any purpose other than in connection with a deficiency related Government procurement operation, the United States Government thereby incurs no responsibility, nor any obligation whatsoever; and the fact that the Government may have furnished, furnished, or in any way supplied the said drawings, specifications, or other data is not to be regarded by implication or otherwise as in any manner licensing the holder or any other person or corporation, or conveying any rights, or permission to manufacture, use, or sell any patented invention that may in any way be related thereto.

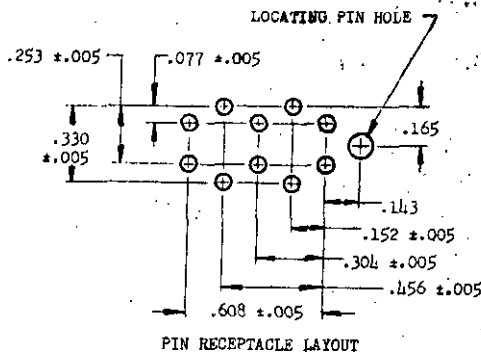
TERMINAL DESIGNATIONS TO APPEAR ON BOTH SIDES OF SOCKET

FED. SUP CLASS

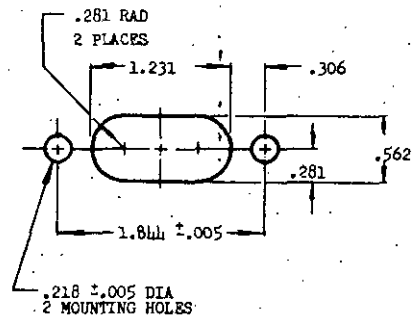
5935



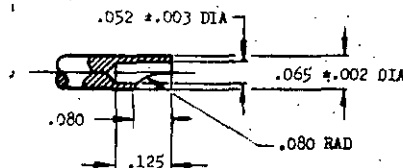
USE WASHERS SUPPLIED WITH MS25332-1 TO ACCOMPLISH THE INDICATED SPACING



PIN RECEPTACLE LAYOUT



MOUNTING HOLE LAYOUT



DETAIL A

- (A) INSERTION AND WITHDRAWAL FORCES:
MEASURED WITH: .0390 ±.0001 DIA PIN
-.0000
- (B) VIBRATION, MIL-STD-202, METHOD 204, CONDITION B, WITH MS25455 INSERTED
- (C) CONTACT TABS, PARA 3.8, MIL-S-12883
- (D) AMBIENT TEMPERATURE RANGE
- (E) PIN ENTRY
- (F) DIELECTRIC, MIN, WITHOUT MATING RELAY ENGAGED
SEA LEVEL
ALTITUDE (80,000 FT)
- (G) MATING RELAY

MATERIAL: BODY; MIL-M-19833, TYPE ODI-30P.

DIMENSIONS IN INCHES. UNLESS OTHERWISE SPECIFIED, TOLERANCES: DECIMALS ±.010.

(A) ENTIRE STANDARD REVISED.

FOR DESIGN FEATURE PURPOSES, THIS STANDARD TAKES PRECEDENCE OVER PROCUREMENT DOCUMENTS REFERENCED HEREIN.
REFERENCED DOCUMENTS SHALL BE OF THE ISSUE IN EFFECT ON DATE OF INVITATIONS FOR BID.

DASH NUMBER	MAX WT LB WITHOUT HARDWARE
-1	.03

1 OZ MIN

10G, 10 TO 1500 CPS
NOT APPLICABLE
-65°C TO +120°C
PARA 3.3.1.2, MIL-C-5015
2500 VRMS
500 VRMS
MS25455

P.A. Navy - Wep	TITLE	MILITARY STANDARD
Other Cust USAF - SGEE	SOCKET, RELAY, ELECTRICAL, 10 CONTACTS, 5 AMF	MS25456(ASG)
PROCUREMENT SPECIFICATION MIL-S-12883	SUPERSEDES:	SHEET 1 OF 1