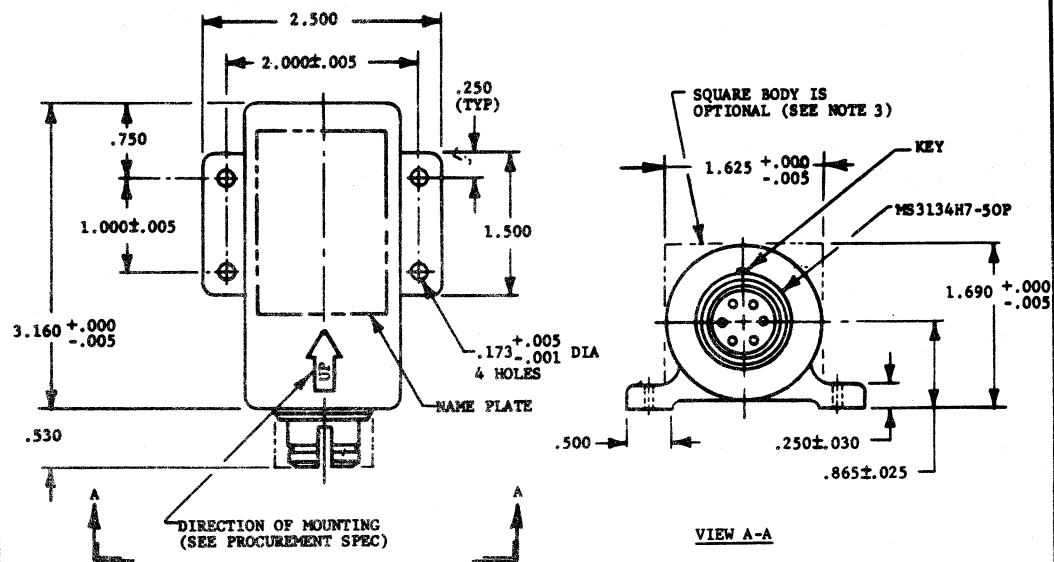


PROJECT NO 6610-N068
P&B. SUP CLASS
6610



DASH NO.	LOAD FACTOR LEVELS
-1	2.0 - 3.5g
-2	2.5 - 4.5g
-3	2.5 - 5.5g
-4	3.0 - 6.0g
-5	4.0 - 5.5g
-6	4.0 - 7.0g
-7	5.0 - 8.0g
-8	5.5 - 7.0g
-9	6.0 - 9.0g
-10	6.0 - 10.0g
-11	2.5 - 3.5g
-12	2.5 - 5.0g
-13	3.0 - 4.5g
-14	3.5 - 5.0g
-15	3.5 - 6.0g
-16	6.5 - 9.5g
-17	7.0 - 10.0g

NOTES:

1. DIMENSIONS IN INCHES. UNLESS OTHERWISE SPECIFIED, TOLERANCES: DECIMALS $\pm .005$.
2. REMOVE ALL BURRS AND BREAK ALL SHARP EDGES.
3. SHAPE OF TRANSDUCER IS OPTIONAL AND MAY BE ROUND OR SQUARE.

FOR DESIGN FEATURE PURPOSES, THIS STANDARD TAKES PRECEDENCE OVER PROCUREMENT DOCUMENTS REFERENCED HEREIN. REFERENCED DOCUMENTS SHALL BE OF THE ISSUE IN EFFECT ON DATE OF INVITATIONS FOR BID.

(G) REVISED & REDRAWN - ADDED DASH NOS. 11 THRU 17

P.A. NAVY - AS Other Cust	TITLE TRANSDUCER, COUNTING ACCELEROMETER	MILITARY STANDARD MS25447(AS)
PROCUREMENT SPECIFICATION MIL-A-22145	SUPERSEDES:	SHEET 1 OF 1

DD FORM 672-1 (Limited coordination)

PREVIOUS EDITIONS OF THIS FORM ARE OBSOLETE.

PLATE NO. 28071

This military standard is approved by NAVAL AIR SYSTEMS COMMAND, Department of the Navy and shall be used by that activity. All other military activities are required to employ this standard where suitable.

APPROVED 1 SEP 1959 REVISED (G) 15 AUG 1972