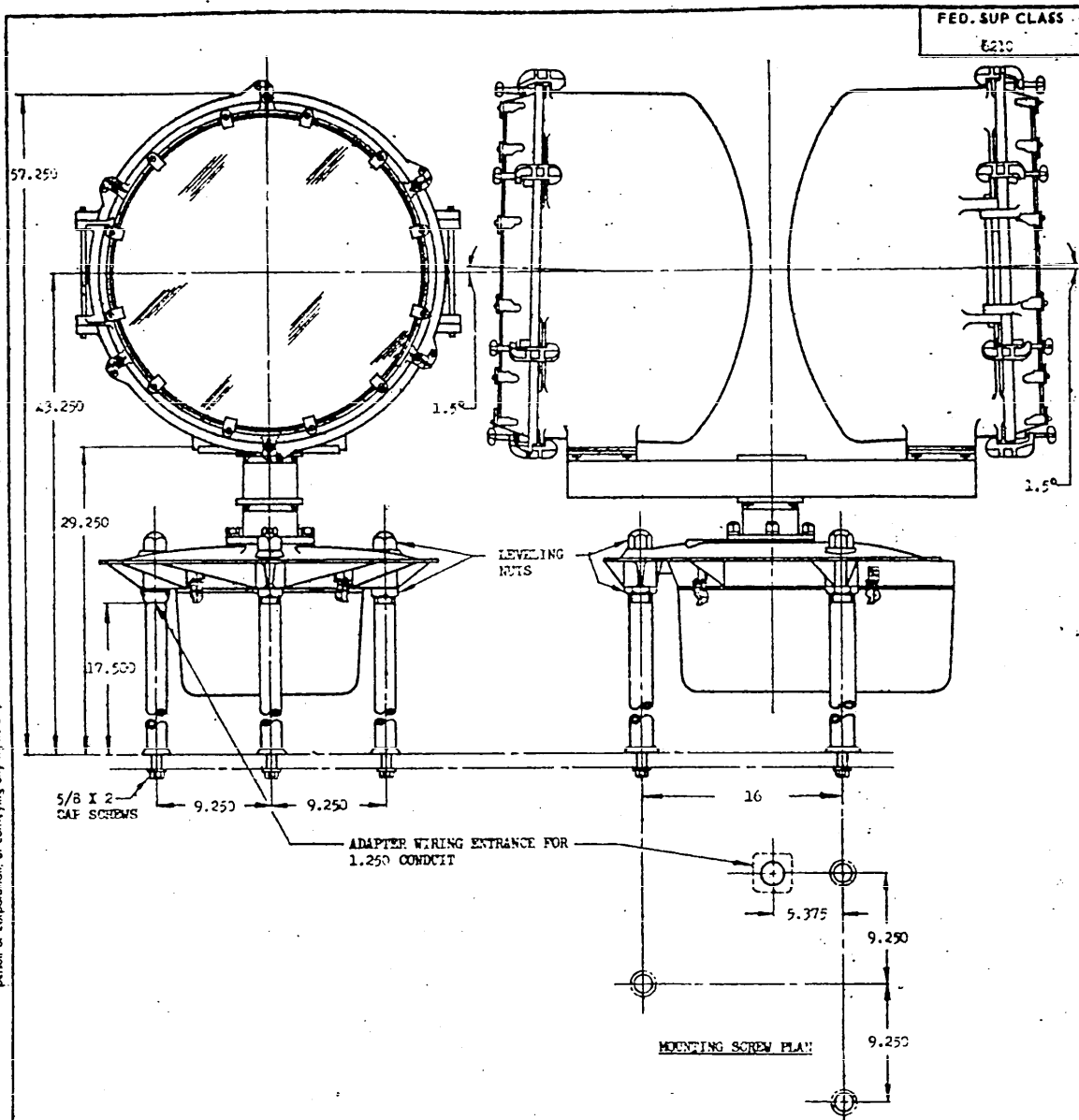


NOTICE: When Government drawings, specifications, or other data are used for any purpose other than in connection with a definitely related Government procurement operation, the United States Government hereby incurs no responsibility, nor any obligation whatsoever; and the fact that the Government may have formulated, furnished, or in any way supplied the said drawings, specifications, or other data is not to be regarded by implication or otherwise as in any manner licensing the holder or any other person or corporation, or conveying any right or permission to manufacture, use, or sell any patented invention that may in any way be related thereto.



DASH NO.	RPM	LAMP						
		WATTS	VOLTS	BULB	BASE	MS PART NO.	COVER GLASS	LENS
-1	6	1200	120	(a) T-20	MOG BIP	MS25015-2	NONE	NONE
-2	6	1200	120	(a) T-20	MOG BIP	MS25015-2	AN2578-1	MS25391-1

(a) HEAT RESISTANT GLASS.

DIMENSIONS IN INCHES. DIMENSIONS ARE FOR REFERENCE ONLY.

FOR DESIGN FEATURE PURPOSES, THIS STANDARD TAKES PRECEDENCE OVER PROCUREMENT DOCUMENTS REFERENCED HEREIN. REFERENCED DOCUMENTS SHALL BE OF THE ISSUE IN EFFECT ON DATE OF INVITATIONS FOR BID.

P.A. USIS - ARBC	TITLE	MILITARY STANDARD
Other Cust Navy - Wep	LIGHT, ROTATING BEACON, 24 INCH, DUPLEX	MS25444(ASG)
PROCUREMENT SPECIFICATION MIL-I-7158	SUPERSEDES: AN256.	SHEET 1 OF 1

This standard has been approved by the Bureau (Department of the Navy) and the Department of the USIS and is mandatory for use by that activity. All other military activities are required to employ this standard where suitable.