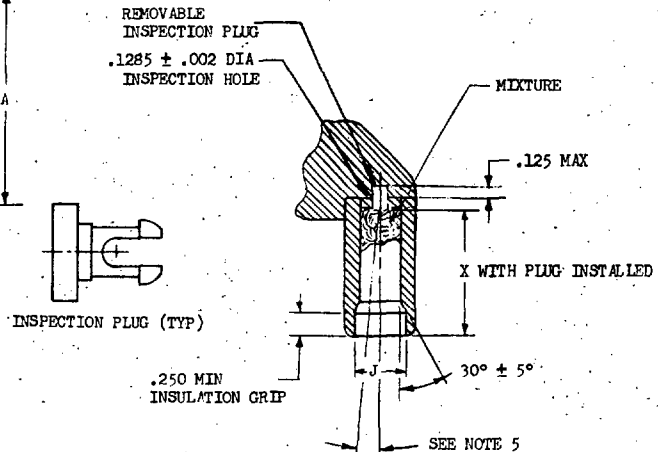
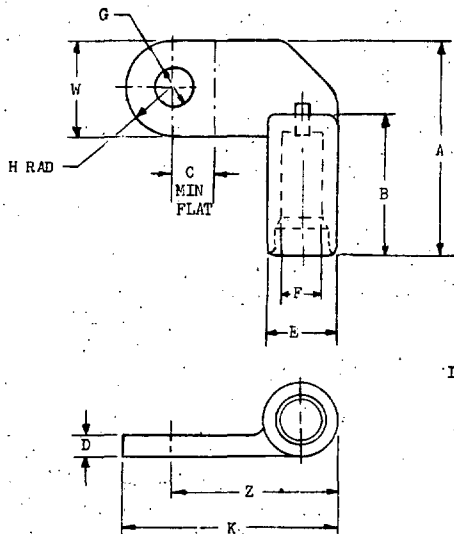


FED. SUP CLASS
5940

DASH NO.	CABLE SIZE	STUD SIZE	A ±.032	B ±.025	C ±.020	D ±.015	E ±.020	F ±.003	G DIA MAX MIN	H ±.008	K ±.035	J DIA ±.010	W ±.016	Z ±.024	X ±.020			
-1	8	NO. 10	1.617	1.067	.372	.096	.355	.167	.203 .193	.344	1.095	.250	.688	.751	.880			
-2		1/4	1.808		.466				.285 .260									
-3		5/16							.343 .320									
-4		3/8							.410 .385									
-5	6	NO. 10	1.742	1.192	.372	.112	.413	.219	.203 .193	.344	1.230	.313	.688	.886	1.005			
-6		1/4	1.935		.466				.285 .260									
-7		5/16							.343 .320									
-8		3/8							.410 .385									
-9	4	NO. 10	1.867	1.317	.372	.128	.510	.273	.203 .193	.344	1.250	.375	.688	.906	1.130			
-10		1/4	2.055		.466				.285 .260									
-11		5/16							.343 .320									
-12		3/8							.410 .385									
-13	2	1/4	2.196	1.458	.466	.143	.601	.342	.285 .260	.437	1.600	.469	.875	1.163	1.271			
-14		5/16							.343 .320									
-15		3/8							.410 .385									
-16		1/2	2.508		.622				.535 .510		1.900		1.187	1.307				
-17	1	1/4	2.196	1.458	.466	.143	.633	.376	.285 .260	.437	1.615	.516	.875	1.178	1.271			
-18		5/16							.343 .320									
-19		3/8							.410 .385									
-20		1/2	2.508		.622				.535 .510		1.935		1.187	1.342				
-21	0	1/4	2.240	1.520	.466	.159	.699	.425	.285 .260	.437	1.710	.563	.375	1.273	1.333			
-22		5/16							.343 .320									
-23		3/8							.410 .385									
-24		1/2	2.570		.622				.535 .510		2.015		1.187	1.422				
-25	00	5/16	2.323	1.582	.466	.190	.789	.485	.343 .320	.437	1.795	.625	.875	1.358	1.395			
-26		3/8							.410 .385									
-27		1/2	2.632		.622				.535 .510		2.105		1.187	1.512				
-28		3/8	2.505		.551				.410 .385		1.994		1.000	1.424				
-29	000	1/2	2.695	1.645	.622	.206	.947	.594	.535 .510	.593	2.145	.703	1.187	1.552	1.614			
-30		3/8	2.663		.551				.410 .385		2.103		1.000	1.603				
-31	0000	1/2	2.851	1.801	.622	.206	.947	.594	.535 .510	.593	2.265	.766	1.187	1.672	1.614			

NOTES:

1. MATERIAL: WROUGHT ALUMINUM, MINIMUM CONDUCTIVITY 57% IACS.
2. TONGUE HARDNESS
MAXIMUM ROCKWELL H-95
MINIMUM ROCKWELL H-65
BARREL HARDNESS
MAXIMUM ROCKWELL H-35
3. TONGUE SURFACES PARALLEL WITHIN .005 INCHES. TONGUE SURFACE FINISH TO BE 63 MICROINCHES MAXIMUM BEFORE PLATING.
4. TERMINAL SHALL BE OF ONE PIECE CONSTRUCTION.
5. A MAXIMUM OF 5° PERMITTED IN UNCRIMPED TERMINALS. AFTER CRIMPING, THE CENTER LINE OF THE BARREL SHALL BE PARALLEL WITHIN ±1° WITH THE FLAT OF THE TONGUE.
6. FINISH: TIN PLATE - ELECTRODEPOSITED .0003 INCH MINIMUM.
7. DIMENSIONS IN INCHES.

FOR DESIGN FEATURE PURPOSES, THIS STANDARD TAKES PRECEDENCE OVER PROCUREMENT DOCUMENTS REFERENCED HEREIN.
REFERENCED DOCUMENTS SHALL BE OF THE ISSUE IN EFFECT ON DATE OF INVITATIONS FOR BID.

P.A. Navy-NERS Other Cust USAF- 11 ARMY- EL	(A) TITLE TERMINAL-LUG, CRIMP STYLE, LEFT ANGLE TYPE, FOR ALUMINUM AIRCRAFT WIRE, CLASS 1	MILITARY STANDARD MS25437
PROCUREMENT SPECIFICATION MIL-T-7099	SUPERSEDES:	SHEET 1 OF 1