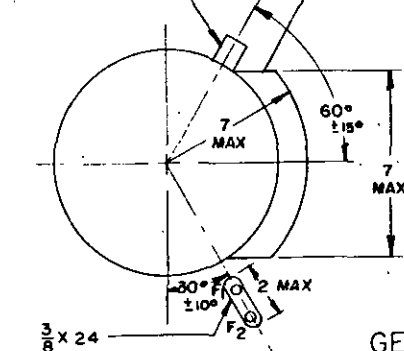


NOTICE—When Government drawings, specifications, or other data are used for any purpose other than in connection with a definitely related Government procurement operation, the United States Government thereby incurs no responsibility, nor any obligation whatsoever, and the fact that the Government may have furnished, furnished, or in any way supplied the said drawings, specifications, or other data is not to be regarded by implication or otherwise as in any manner licensing the holder or any other person or corporation, or conveying any rights or permission to manufacture, use, or sell any patented invention that may in any way be related thereto.

MS 33631 SHALL BE USED AS A DESIGN GUIDE. LOW VOLTAGE TERMINALS IN AREA "A", ALL OTHER TERMINALS IN AREA "AA".

MS 3112 E 18-11S

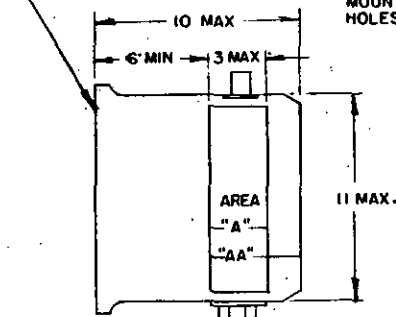


GENERATOR

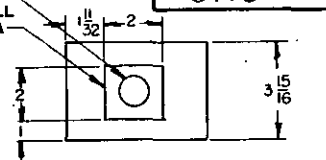
MS 3112 E 20-16P

CONNECTOR CENTER SHALL REMAIN WITHIN THIS AREA

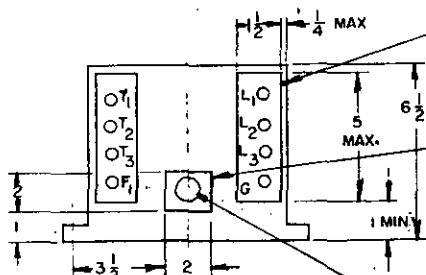
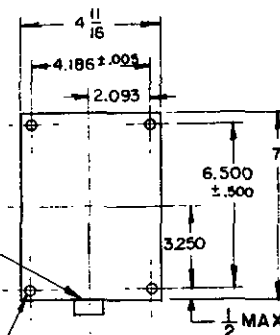
MOUNTING FLANGE AND COUPLING IN ACCORDANCE WITH AID10266. SLOTTED MOUNTING HOLES.



FED. SUP CLASS
6115



CONNECTOR MTG. SURFACE



MS 25262 SHALL BE USED AS A DESIGN GUIDE EXCEPT TERMINALS SHALL BE 3/8 x 24

CONNECTOR CENTERS SHALL REMAIN WITHIN THIS AREA

MS 3112 E 18-11P

MS 3112 E 14-19P

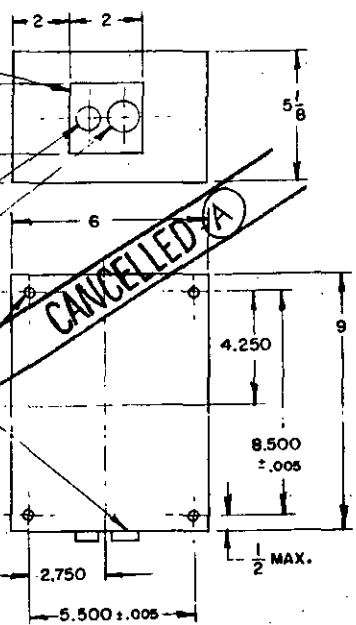
MS 3112 E 20-16P

.203 ± .005 DIA. DRILL THRU 4 MOUNTING HOLES

CONNECTOR MTG. SURFACE

.203 ± .005 DIA. DRILL THRU 6 MOUNTING HOLES

REGULATOR



STATIC EXCITER

GENERATOR DATA	
RATED VOLTAGE	120/208
RATED OUTPUT	40 KVA
PHASE	3
SPEED RANGE	5700-6300 RPM
MAX SPEED FOR REGULATION	5700 RPM
OVERSPEED	7900 RPM
RATED POWER FACTOR	0.75 LAGGING TO 1.0
EFFICIENCY - MIN AT RATED LOAD	85%
MAX WEIGHT	80 LB
OVERHUNG MOMENT -- MAX	450 IN-LB
FREQUENCY	380/420 CPS
CLASS	C
SHEAR	6000 ± 10%
FLEXIBLE DRIVE	NOT REQUIRED

SUPERVISORY PANEL

REGULATOR DATA		
REGULATOR WEIGHT -- MAXIMUM		6 LB
SUPERVISORY PANEL DATA		
SUPERVISORY PANEL WEIGHT -- MAXIMUM		6 LB
STATIC EXCITER DATA		
STATIC EXCITER WEIGHT -- MAXIMUM		21 LB
SYSTEMS DATA		
TYPE	GENERATOR ROTATION	REGULATOR AND SUPERVISORY PANEL
MS25367-1 MS25367-2	CLOCKWISE COUNTERCLOCKWISE] AS REQUIRED

CANCELLED AFTER 28 APRIL 1966
NO SUPERSEDING STANDARD

THIS IS A DESIGN STANDARD. NOT TO BE USED AS A PART NUMBER.

P.A. BUREAU OF AERONAUTICS Other Cust	TITLE GENERATOR SYSTEM, ALTERNATING CURRENT, STATICALLY EXCITED, 40 KVA	MILITARY STANDARD MS 25367 (AER)
PROCUREMENT SPECIFICATION MIL-G-21480 (AER)	SUPERSEDES:	SHEET 1 OF 1