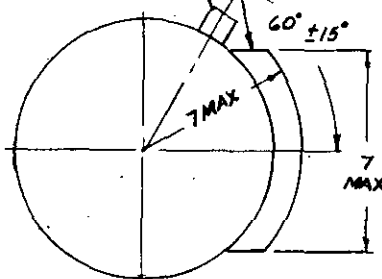
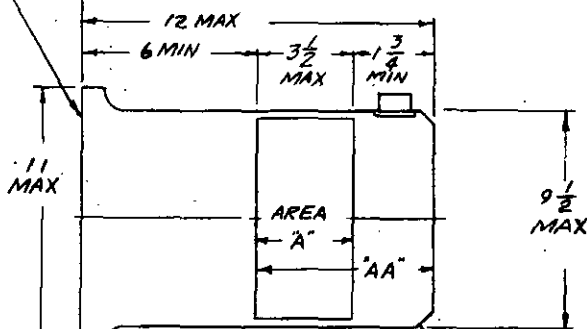


MS 3361 SHALL BE USED AS  
A DESIGN GUIDE...LOAD TERMINALS  
IN AREA "A". ALL OTHER TERMINALS  
IN AREA "AA"

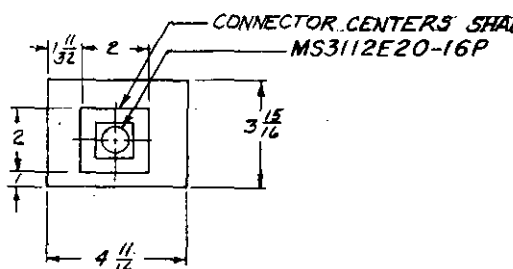
MS3112E18-115



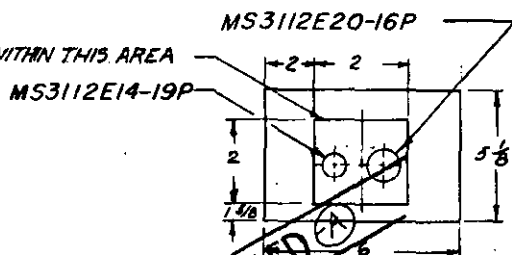
MOUNTING FLANGE & COUPLING  
IN ACCORDANCE WITH AND 10266  
SLOTTED MOUNTING HOLES



FLANGE & CLEARANCE  
SUITABLE FOR MOUNTING  
MS 25159 OR MS 25160

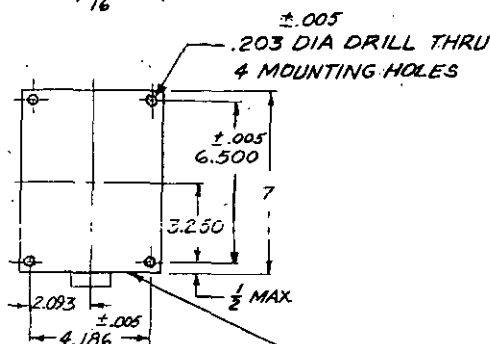
GENERATOR

CONNECTOR CENTERS SHALL REMAIN WITHIN THIS AREA  
MS3112E20-16P



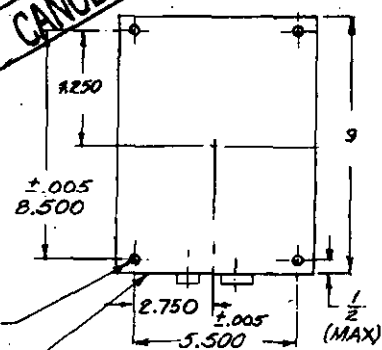
MS3112E20-16P

MS3112E14-19P

REGULATOR

±.005  
.203 DIA DRILL THRU  
4 MOUNTING HOLES

CONNECTOR MOUNTING SURFACE

SUPERVISORY PANEL

GENERATOR DATA		REGULATOR DATA				
RATED VOLTAGE	120/208	REGULATOR WEIGHT -- MAXIMUM		6 LB		
RATED OUTPUT	40 KVA	SUPERVISORY PANEL DATA				
PHASE	3	SUPERVISORY PANEL WEIGHT -- MAXIMUM		6 LB		
SPEED RANGE	5700-6300 RPM	SYSTEMS DATA				
MAX SPEED FOR REGULATION	6600 RPM	CANCELLLED	TYPE	GENERATOR	ROTATION	REGULATOR AND SUPERVISORY PANEL
OVERSPEED	7900 RPM		MS25366-1	BRUSH TYPE	CLOCKWISE	AS REQUIRED
RATED POWER FACTOR	0.75 LAGGING TO 1.0		MS25366-2	BRUSH TYPE	COUNTERCLOCKWISE	
EFFICIENCY MIN AT RATED LOAD	85%		MS25366-3	BRUSHLESS	CLOCKWISE	
MAX WEIGHT	85 LB		MS25366-4	BRUSHLESS	COUNTERCLOCKWISE	
OVERHUNG MOMENT - MAX	560 IN-LB					
FREQUENCY	380-420 CPS					
CLASS	C					
SHEAR	6000 IN-LB $\pm$ 10%					
FLEXIBLE DRIVE	NOT REQUIRED					
CANCELLLED		AFTER 28 April 1966 NO SUPERSEDING STANDARD				

**CANCELLED**

AFTER 28 April 1966  
NO SUPERSEDING STANDARD

THIS IS A DESIGN STANDARD. NOT TO BE USED AS A PART NUMBER.

P.A. BUREAU OF AERONAUTICS	TITLE	MILITARY STANDARD
Other Cust	GENERATOR SYSTEM ALTERNATING CURRENT INTEGRALLY EXCITED - 40 KVA	MS 25366(AER)
PROCUREMENT SPECIFICATION MIL G-21480(AER)	SUPERSEDES:	SHEET 1 OF 1

NOTICE.—When Government drawings, specifications, or other data are used for any purpose other than in connection with a definitely related Government procurement operation, the United States Government thereby incurs no responsibility, nor any obligation whatsoever; and the fact that the Government may have furnished, or in any way supplied the said drawings, specifications, or other data is not to be regarded by implication or otherwise as in any manner licensing the holder or any other person or corporation, or conveying any rights or permission to manufacture, use, or sell any patented invention that may in any way be related thereto.

This standard has been approved by the Department of the NAVY and is mandatory for use by that activity. All other military activities are required to employ this standard where suitable.

APPROVED 19 April 1966

REVISED

APPROVED 19 August 1959