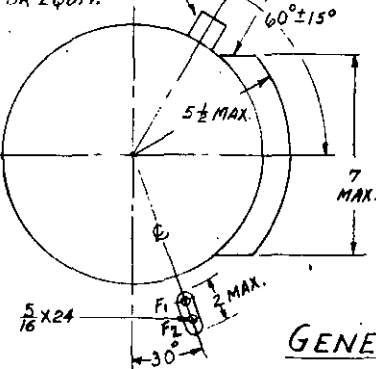


NOTICE—When Government drawings, specifications, or other data are used for any purpose other than in connection with a definitely related Government procurement operation, the United States Government thereby incurs no responsibility, nor any obligation whatsoever, and the fact that the Government may have furnished, or in any way supplied the said drawings, specifications, or other data is not to be regarded by implication or otherwise as in any manner licensing the holder or any other person or corporation, or conveying any rights or permission to manufacture, use, or sell any patented invention that may in any way be related thereto.

MS33631 SHALL BE USED AS A DESIGN GUIDE EXCEPT TERMINALS SHALL BE $\frac{5}{16}$ X 24 STUDS. LOAD TERMINALS IN AREA "A" ALL OTHER TERMINALS IN AREA "AA"

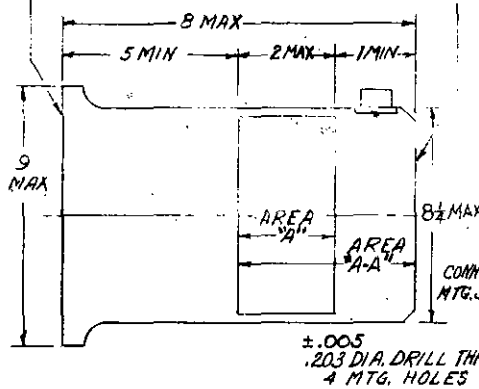
RECEPTACLE
MS-3112E-18-11S
OR EQUIV.



GENERATOR

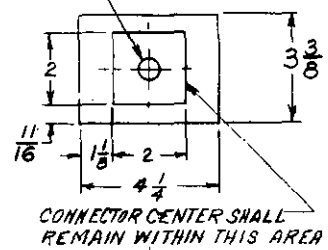
MOUNTING FLANGE AND COUPLING
IN ACCORDANCE WITH AS 472
TYPE XXI-A AND AS 474

FLANGE & CLEARANCE SUITABLE
FOR MOUNTING MS25159 OR MS25160

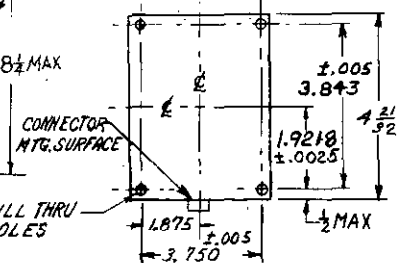


BENDIX-SCINTILLA RECEPTACLE
PTOZE-20-16P OR EQUIV.

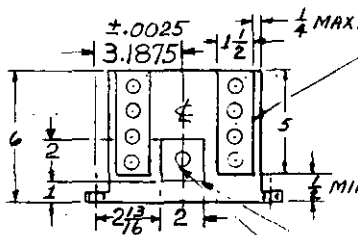
FED. SUP CLASS
6115



CONNECTOR CENTER SHALL
REMAIN WITHIN THIS AREA



REGULATOR

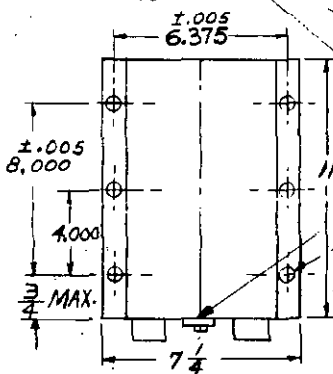


MS25262 SHALL BE USED AS A DESIGN
GUIDE EXCEPT TERMINALS SHALL BE
 $\frac{5}{16}$ X 24 STUDS.

RECEPTACLES
MS-3112E-14-19P &
MS-3112E-20-16P OR EQUIV.

CONNECTOR CENTERS SHALL
REMAIN WITHIN THIS AREA

RECEPT.
MS-3112E-18-11P OR EQUIV.



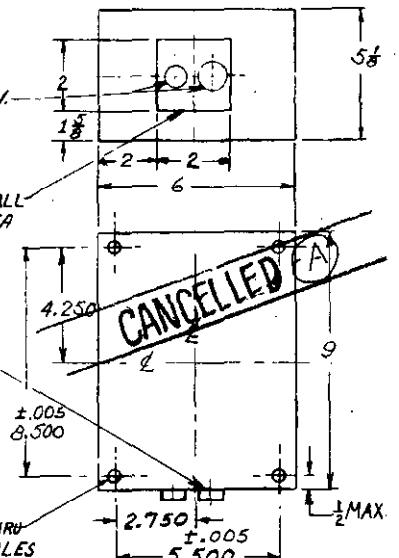
CONNECTOR MTG. SURFACE

±.005
.203 DIA. DRILL THRU
6 MOUNTING HOLES

CANCELLED

AFTER 28 April 1966
NO SUPERSEDING STANDARD

±.005
.203 DIA. DRILL THRU
4 MOUNTING HOLES



SUPERVISORY PANEL

STATIC EXCITER

GENERATOR DATA		REGULATOR DATA	
RATED VOLTAGE	120/208V	REGULATOR WEIGHT-MAXIMUM	4 LB
RATED OUTPUT	20 KVA	SUPERVISORY PANEL DATA	
PHASE	3	SUPERVISORY PANEL WEIGHT-MAXIMUM	6 LB
SPEED RANGE	7600-8400 RPM	STATIC EXCITER DATA	
MAX SPEED FOR REGULATION	8800 RPM	STATIC EXCITER WEIGHT-MAXIMUM	12 LB
OVERSPEED	10,500 RPM	SYSTEMS DATA	
RATED POWER FACTOR	0.75 LAGGING TO 1.0	TYPE	GENERATOR ROTATION
EFFICIENCY MIN. AT RATED LOAD	80%	MS25363-1	CLOCKWISE
MAX. WEIGHT	99 LB.	MS25363-2	COUNTERCLOCKWISE
OVERHUNG MOMENT, MAX	169 IN. LB.	REGULATOR AND SUPERVISORY PANEL	
FREQUENCY	350-420 CPS	AS REQUIRED	
CLASS	C		
SHEAR	1200 IN. LB. ± 10%		

THIS IS A DESIGN STANDARD. NOT TO BE USED AS A PART NUMBER.

P.A. BUREAU OF AERONAUTICS	TITLE	MILITARY STANDARD
Other Cust	GENERATOR SYSTEM, ALTERNATING CURRENT, STATICALLY EXCITED, 20 KVA	MS25363 (AER)
PROCUREMENT SPECIFICATION MIL-G-21480 (AER)	SUPERSEDES:	SHEET 1 OF 1