

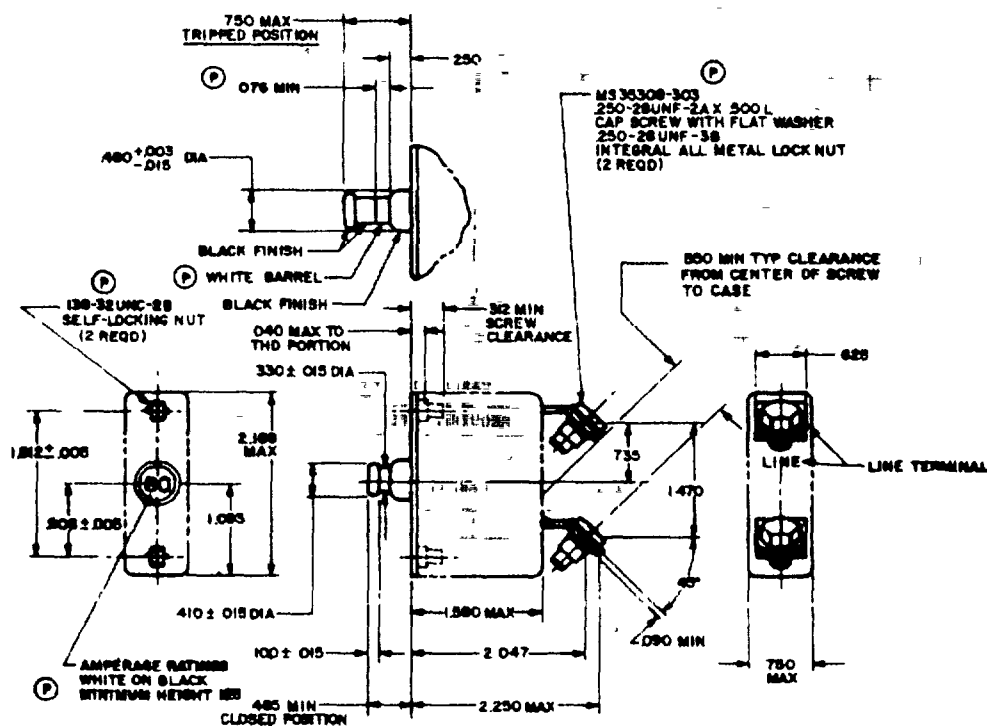
**10-76869-13**      **10-76869-14**

USAF - 11  
DZSC - 11

Passion/pass information is current as of the date of this document. For future coordination of changes to this document, draft submissions should be based on information in the current version.

This letter is being forwarded to you by all Departmental Agencies of the Department of Defense Solicitation for all new engineering and design contracts and for repeat use as well as made from this document.

APSC P/A  
DISTRIBUTION STATEMENT A Approved for public release; distribution is unlimited



APPROVED 14 NOV 58 REVISED 2 DEC 77 1 SEPT 78 7 DEC 83 30 JAN 84 30 NOV 1987

PTA NAVY - AS Other Cus: USAF - SS ARMY - LR	INTER NATIONAL INTEREST *	117 1 Circuit Breaker - Aircraft, Trip-Free, Push-Pull, 50 Thru 100 Amp, Type I	<b>MILITARY STANDARD</b> <b>MS 25361</b> SHEET 1 OF 3
PROCUREMENT SPECIFICATION MIL C 5809		SUPERSEDES 450025361C (USAF)	

DD FORM 672-1 (Continued)

1. 2. 3. 4. 5. 6. 7. 8. 9. 10. 11. 12. 13. 14. 15. 16. 17. 18. 19. 20. 21. 22. 23. 24. 25. 26. 27. 28. 29. 30. 31. 32. 33. 34. 35. 36. 37. 38. 39. 40. 41. 42. 43. 44. 45. 46. 47. 48. 49. 50. 51. 52. 53. 54. 55. 56. 57. 58. 59. 60. 61. 62. 63. 64. 65. 66. 67. 68. 69. 70. 71. 72. 73. 74. 75. 76. 77. 78. 79. 80. 81. 82. 83. 84. 85. 86. 87. 88. 89. 90. 91. 92. 93. 94. 95. 96. 97. 98. 99. 100. 101. 102. 103. 104. 105. 106. 107. 108. 109. 110. 111. 112. 113. 114. 115. 116. 117. 118. 119. 120. 121. 122. 123. 124. 125. 126. 127. 128. 129. 130. 131. 132. 133. 134. 135. 136. 137. 138. 139. 140. 141. 142. 143. 144. 145. 146. 147. 148. 149. 150. 151. 152. 153. 154. 155. 156. 157. 158. 159. 160. 161. 162. 163. 164. 165. 166. 167. 168. 169. 170. 171. 172. 173. 174. 175. 176. 177. 178. 179. 180. 181. 182. 183. 184. 185. 186. 187. 188. 189. 190. 191. 192. 193. 194. 195. 196. 197. 198. 199. 200. 201. 202. 203. 204. 205. 206. 207. 208. 209. 210. 211. 212. 213. 214. 215. 216. 217. 218. 219. 220. 221. 222. 223. 224. 225. 226. 227. 228. 229. 230. 231. 232. 233. 234. 235. 236. 237. 238. 239. 240. 241. 242. 243. 244. 245. 246. 247. 248. 249. 250. 251. 252. 253. 254. 255. 256. 257. 258. 259. 260. 261. 262. 263. 264. 265. 266. 267. 268. 269. 270. 271. 272. 273. 274. 275. 276. 277. 278. 279. 280. 281. 282. 283. 284. 285. 286. 287. 288. 289. 290. 291. 292. 293. 294. 295. 296. 297. 298. 299. 300. 301. 302. 303. 304. 305. 306. 307. 308. 309. 310. 311. 312. 313. 314. 315. 316. 317. 318. 319. 320. 321. 322. 323. 324. 325. 326. 327. 328. 329. 330. 331. 332. 333. 334. 335. 336. 337. 338. 339. 340. 341. 342. 343. 344. 345. 346. 347. 348. 349. 350. 351. 352. 353. 354. 355. 356. 357. 358. 359. 360. 361. 362. 363. 364. 365. 366. 367. 368. 369. 370. 371. 372. 373. 374. 375. 376. 377. 378. 379. 380. 381. 382. 383. 384. 385. 386. 387. 388. 389. 390. 391. 392. 393. 394. 395. 396. 397. 398. 399. 400. 401. 402. 403. 404. 405. 406. 407. 408. 409. 410. 411. 412. 413. 414. 415. 416. 417. 418. 419. 420. 421. 422. 423. 424. 425. 426. 427. 428. 429. 430. 431. 432. 433. 434. 435. 436. 437. 438. 439. 440. 441. 442. 443. 444. 445. 446. 447. 448. 449. 450. 451. 452. 453. 454. 455. 456. 457. 458. 459. 460. 461. 462. 463. 464. 465. 466. 467. 468. 469. 470. 471. 472. 473. 474. 475. 476. 477. 478. 479. 480. 481. 482. 483. 484. 485. 486. 487. 488. 489. 490. 491. 492. 493. 494. 495. 496. 497. 498. 499. 500. 501. 502. 503. 504. 505. 506. 507. 508. 509. 510. 511. 512. 513. 514. 515. 516. 517. 518. 519. 520. 521. 522. 523. 524. 525. 526. 527. 528. 529. 530. 531. 532. 533. 534. 535. 536. 537. 538. 539. 540. 541. 542. 543. 544. 545. 546. 547. 548. 549. 550. 551. 552. 553. 554. 555. 556. 557. 558. 559. 560. 561. 562. 563. 564. 565. 566. 567. 568. 569. 570. 571. 572. 573. 574. 575. 576. 577. 578. 579. 580. 581. 582. 583. 584. 585. 586. 587. 588. 589. 590. 591. 592. 593. 594. 595. 596. 597. 598. 599. 600. 601. 602. 603. 604. 605. 606. 607. 608. 609. 610. 611. 612. 613. 614. 615. 616. 617. 618. 619. 620. 621. 622. 623. 624. 625. 626. 627. 628. 629. 630. 631. 632. 633. 634. 635. 636. 637. 638. 639. 640. 641. 642. 643. 644. 645. 646. 647. 648. 649. 650. 651. 652. 653. 654. 655. 656. 657. 658. 659. 660. 661. 662. 663. 664. 665. 666. 667. 668. 669. 670. 671. 672. 673. 674. 675. 676. 677. 678. 679. 680. 681. 682. 683. 684. 685. 686. 687. 688. 689. 690. 691. 692. 693. 694. 695. 696. 697. 698. 699. 700. 701. 702. 703. 704. 705. 706. 707. 708. 709. 710. 711. 712. 713. 714. 715. 716. 717. 718. 719. 720. 721. 722. 723. 724. 725. 726. 727. 728. 729. 730. 731. 732. 733. 734. 735. 736. 737. 738. 739. 740. 741. 742. 743. 744. 745. 746. 747. 748. 749. 750. 751. 752. 753. 754. 755. 756. 757. 758. 759. 760. 761. 762. 763. 764. 765. 766. 767. 768. 769. 770. 771. 772. 773. 774. 775. 776. 777. 778. 779. 780. 781. 782. 783. 784. 785. 786. 787. 788. 789. 790. 791. 792. 793. 794. 795. 796. 797. 798. 799. 800. 801. 802. 803. 804. 805. 806. 807. 808. 809. 810. 811. 812. 813. 814. 815. 816. 817. 818. 819. 820. 821. 822. 823. 824. 825. 826. 827. 828. 829. 830. 831. 832. 833. 834. 835. 836. 837. 838. 839. 840. 84

USE PREVIOUS EDITION

USAF - 11  
DESC - ESThis information is current as of the date of this document.  
For future coordination of changes to this document, and circulation  
should be based on the information in the current document.This military standard is approved for use by all Departments  
& Agencies of the Department of Defense. Selection for all new  
engineering and design applications and for replacement use shall  
be made from this document.

| TABLE I (P)                               |                              |                      |                  |                           |       |                  |          |  |          |              |
|---|------------------------------|----------------------|------------------|---------------------------|-------|------------------|----------|--|----------|--------------|
| ELECTRICAL AND MECHANICAL CHARACTERISTICS |                              |                      |                  |                           |       |                  |          |  |          |              |
| DASH NUMBER                               | NOMINAL CAPACITY AMPERES (A) | VOLTAGE DROP MAX (V) | WEIGHT MAX (LBS) | OPERATING FORCE MAX (LBS) |       | ENDURANCE CYCLES |          |  |          | MECH NO LOAD |
|   |                              |                      |                  | PULLOUT                   | RESET | RESISTIVE        |          | INDUCTIVE                                  |          |              |
|   |                              |                      |                  |                           |       | AC               | DC       | AC   | DC       |              |
| 50  | 50                           | 0.3                  | 0.25             | 12                        | 16    | 1/ 5,000         | 2/ 5,000 | 1/ 5,000<br>6 TO 7<br>LAGGING POWER FACTOR | 2/ 2,500 | 5,000        |
| 60  | 60                           |                      |                  |                           |       |                  |          |  |          |              |
| 70  | 70                           |                      |                  |                           |       |                  |          |  |          |              |
| 75  | 75                           |                      |                  |                           |       |                  |          |  |          |              |
| 80  | 80                           |                      |                  |                           |       |                  |          |  |          |              |
| 90  | 90                           |                      |                  |                           |       |                  |          |  |          |              |
| 100                                       | 100                          |                      |                  |                           |       |                  |          |  |          |              |

1/ 400 CYCLE 115/200 VOLT SYSTEM, TESTED AT 120 ± 5 VOLTS 380 420 HZ  
2/ 28 VOLTS DC SYSTEM TESTED AT 30 ± 2 VOLTS

| TABLE II (P)   |                        |                        |          |         |        |                        |                        |                        |                        |
|--|------------------------|------------------------|----------|---------|--------|------------------------|------------------------|------------------------|------------------------|
| DETAIL CALIBRATION REQUIREMENTS - TRIP TIME IN SECONDS |                        |                        |          |         |        |                        |                        |                        |                        |
| NOMINAL CAPACITY AMPERES (A)                           | 25°C                   |                        |          |         |        | -40°C                  |                        | +71°C                  |                        |
|  | PERCENT RATED CURRENT  |                        |          |         |        | PERCENT RATED CURRENT  |                        | PERCENT RATED CURRENT  |                        |
|  | 105                    | 138                    | 200      | 400     | 600    | 125                    | 165                    | 70                     | 125                    |
| 50   | MUST HOLD - 1 HOUR MIN | MUST TRIP - 1 HOUR MAX | 15 TO 65 | 2 TO 10 | 1 TO 4 | MUST HOLD - 1 HOUR MIN | MUST TRIP - 1 HOUR MAX | MUST HOLD - 1 HOUR MIN | MUST TRIP - 1 HOUR MAX |
| 60   |                        |                        |          |         |        |                        |                        |                        |                        |
| 70   |                        |                        |          |         |        |                        |                        |                        |                        |
| 75   |                        |                        |          |         |        |                        |                        |                        |                        |
| 80   |                        |                        |          |         |        |                        |                        |                        |                        |
| 90   |                        |                        |          |         |        |                        |                        |                        |                        |
| 100  |                        |                        |          |         |        |                        |                        |                        |                        |

AMBIENT TEMPERATURE TOLERANCE ±2°C

| TABLE III (P)                               |                                 |       |        |        |                                  |                                     |
|---|---------------------------------|-------|--------|--------|----------------------------------|-------------------------------------|
| INTERRUPTING CURRENT (AMPERES) REQUIREMENTS |                                 |       |        |        |                                  |                                     |
| NOMINAL CAPACITY AMPERES (A)                | TEST DESIGNATION PER MIL-C-5809 |       |        |        |                                  |                                     |
|   | A                               | B     | C      | D      | E                                | F                                   |
| 50  | 3,000                           | 5,500 | 10,000 | 15,000 | a) 12,000<br>b) 11,000<br>c) 750 | a) 13,000<br>b) 11,500<br>c) 11,000 |
| 60  |                                 |       |        |        |                                  |                                     |
| 70  |                                 |       |        |        |                                  |                                     |
| 75  |                                 |       |        |        |                                  |                                     |
| 80  |                                 |       |        |        |                                  |                                     |
| 90  |                                 |       |        |        |                                  |                                     |
| 100   |                                 |       |        |        |                                  |                                     |

|   |   |   |  |
|---|---|---|--|
| P.A. NAVY - AS<br>Other Out<br>USAF - 85<br>ARMY - ER NOTE 60 | INTER-<br>NATIONAL<br>INTEREST<br>(SEE #) | TITLE<br>Circuit Breaker - Aircraft, Trip-Free,<br>Push-Pull, 50 Thru 100 Amp, Type I | <b>MILITARY STANDARD</b><br><b>MS25361</b> |
| PRECISEMENT SPECIFICATION<br>MIL-C-5809                       |   | SUPERSEDES<br>MS0025361 (USAF)  | SHEET 2 OF 3                               |

FOR CHANGES SEE SHEET 1

REVISED

BY AON 14

FED SUP CLASS

5925

TABLE IV (P)

| ENVIRONMENTAL PERFORMANCE                 |  |
|---|--|
| MAX OPERATING ALTITUDE-FT                 | 70,000   |
| OPERATING AMBIENT TEMP RANGE              | -40°C TO +71°C   |
| VIBRATION - IN ACCORDANCE WITH MIL-C-5809 | SINE - REQUIRED<br>HIGH LEVEL SINE (OPTION)<br>RANDOM (OPTION) |
| SHOCK                                     | 30G MIL-STD-202 METHOD 213-TEST METHOD J                       |
| ACCELERATION                              | 10G  |

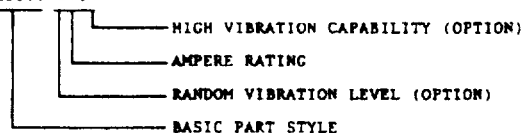
## NOTES

- 1 DIMENSIONS ARE IN INCHES UNLESS OTHERWISE SPECIFIED TOLERANCE DECIMALS  $\pm .031$ ; ANGLES  $\pm 2^\circ$
- 2 REFERENCE DOCUMENTS SHALL BE OF THE ISSUE IN EFFECT ON DATE OF INVITATION FOR BIDS, OR REQUEST FOR PROPOSAL EXCEPT THE REFERENCED ADOPTED INDUSTRY DOCUMENTS SHALL GIVE THE DATE OF THE ISSUE ADOPTED
- 3 FOR DESIGN FEATURE PURPOSES THIS STANDARD TAKES PRECEDENCE OVER PROCUREMENT DOCUMENTS REFERENCED HEREIN
- 4 CERTAIN PROVISIONS OF THE STANDARD ARE THE SUBJECT OF INTERNATIONAL STANDARDIZATION AGREEMENT ASCC 12/3 WHEN REVISION OR CANCELLATION OF THIS STANDARD IS PROPOSED WHICH WILL EFFECT OR VIOLATE THE INTERNATIONAL AGREEMENT CONCERNED, THE PREPARING ACTIVITY WILL TAKE APPROPRIATE RECONCILIATION ACTION THROUGH INTERNATIONAL STANDARDIZATION CHANNELS, INCLUDING DEPARTMENTAL STANDARDIZATION OFFICES, IF REQUIRED
- 5 VOLTAGE RATING 28VDC NOMINAL OR 115V 400 HZ NOMINAL

## REQUIREMENTS

- 1 PHANTOM LINES INDICATE CONTOUR IS OPTIONAL PROVIDED MAXIMUM DIMENSIONS ARE NOT EXCEEDED
- 2 TERMINAL SCREW TIGHTENING TORQUE  $\geq 18$ -IN MAX
- 3 CIRCUIT BREAKERS ARE DESIGNED TO BE NON-RECYCLING PER MIL-C-5809
- 4 THE PART NUMBER FOR CIRCUIT BREAKERS IN ACCORDANCE WITH THIS SPECIFICATION SHALL CONFORM TO THE EXAMPLE BELOW

MS25361-D75V



WHEN A DESIGNATOR IS NOT APPLICABLE IT SHALL BE OMITTED FROM THE PART NUMBER

UNCLASSIFIED

UNCLASSIFIED

USAF - 11  
DSC - 15

This military standard is current as of the date of this document. For future consideration of changes to this document, draft circulation should be based on the information in the current DODDS.

This military standard is approved for use by all Departments & Agencies of the Department of Defense. Selection for all new engineering and design applications and for repetitive work shall be made from this document.

|  |   |  |
|--|---|--|
| P.A.<br>NAVY - AS<br>Other Code<br><br>USAF - 65<br>ARMY ER NOTE 4 | INTER-<br>NATIONAL<br>INTEREST<br>(SEE<br>NOTE 4) | <b>MILITARY STANDARD</b><br><br><b>MS25361</b> |
| PROCUREMENT SPECIFICATION<br>MIL-C-5809                            | SUPERSEDES<br>MS25361-1 (1961)                    | SHEET 1 OF 1                                   |

DD FORM 672-1 (1962)

REPLACES DODDS OF THIS FORM AND DERIVATIVES

PLATE NO. 20000

1 235 215 523000 704 4 16 NOV 56