

NOTICE—When Government drawings, specifications, or other data are used for any purpose other than in connection with a definitely related Government procurement operation, the United States Government hereby incurs no liability, and the fact that the Government has authorized the use of such drawings, specifications, or other data in no way constitutes an endorsement or approval by the Government of any manner in which they may be used, or in any manner in which the holder or any other person is responsible for manufacturing, use, or for any patented invention that may in any way be related thereto.

This standard has been approved by the Bureau (Department of the Navy) and the Department of the USAF and is mandatory for use by their activity. All other military activities are required to employ this standard where suitable.

CURRENT CAPACITY 28 VOLT DC			CURRENT CAPACITY 115 VOLTS, 100 CYCLES AC		
RESISTIVE	INDUCTIVE	MOTOR	RESISTIVE	INDUCTIVE	MOTOR
15	10	10	15	15	6

MATERIAL: CASE, COVER AND PUSH BUTTON: DIALYL PHTHALATE.

DIMENSIONS IN INCHES. UNLESS OTHERWISE SPECIFIED, TOLERANCES: DECIMALS $\pm .015$.

EXACT SHAPE OF SWITCH OPTIONAL, PROVIDED DIMENSIONS SPECIFIED ARE NOT EXCEEDED.

TEST REQUIREMENT: FOR SHORT CIRCUIT TEST, USE SIZE AW-16 CABLE AND CIRCUIT BREAKER MS25017-15.

Ⓢ CANCELLED - For procurement use MIL-S-8805/5

FOR DESIGN FEATURE PURPOSES, THIS STANDARD TAKES PRECEDENCE OVER PROCUREMENT DOCUMENTS REFERENCED HEREIN. REFERENCED DOCUMENTS SHALL BE OF THE ISSUE IN EFFECT ON DATE OF INVITATIONS FOR BID.

P.A. USAF 85 Other Cust USAF 85	TITLE SWITCH, SENSITIVE - MAINTAINED 15 AMP, 4 CIRCUIT, AND SOLDER TERMINAL	MILITARY STANDARD MS25350(ASG)
PROCUREMENT SPECIFICATION MIL-S-6743	SUPERSEDES:	SHEET 1 OF 1

DD FORM 1 SEP 57 672-1 (Limited coordination)

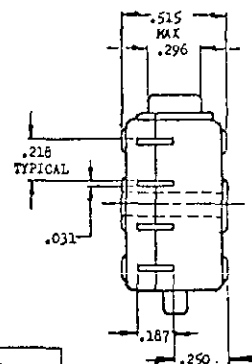
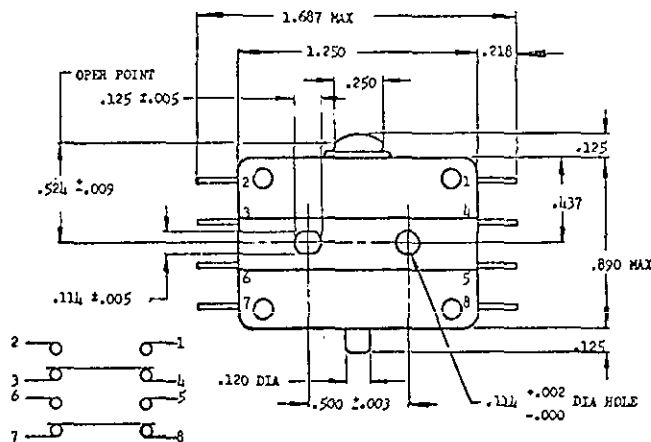
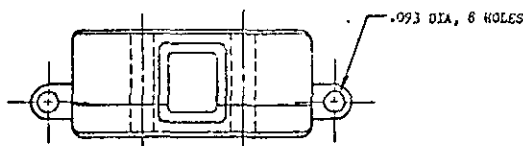
PREVIOUS EDITIONS OF THIS FORM ARE OBSOLETE.

5930-F230-3

☆ U. S. GOVERNMENT PRINTING OFFICE: 1968-341-513/A-2398

APPROVED 13 OCT 58 REVISED 25 MAY 60 (B) 11 OCT 68

FED. SUP CLASS
5930



DASH NO.
-1