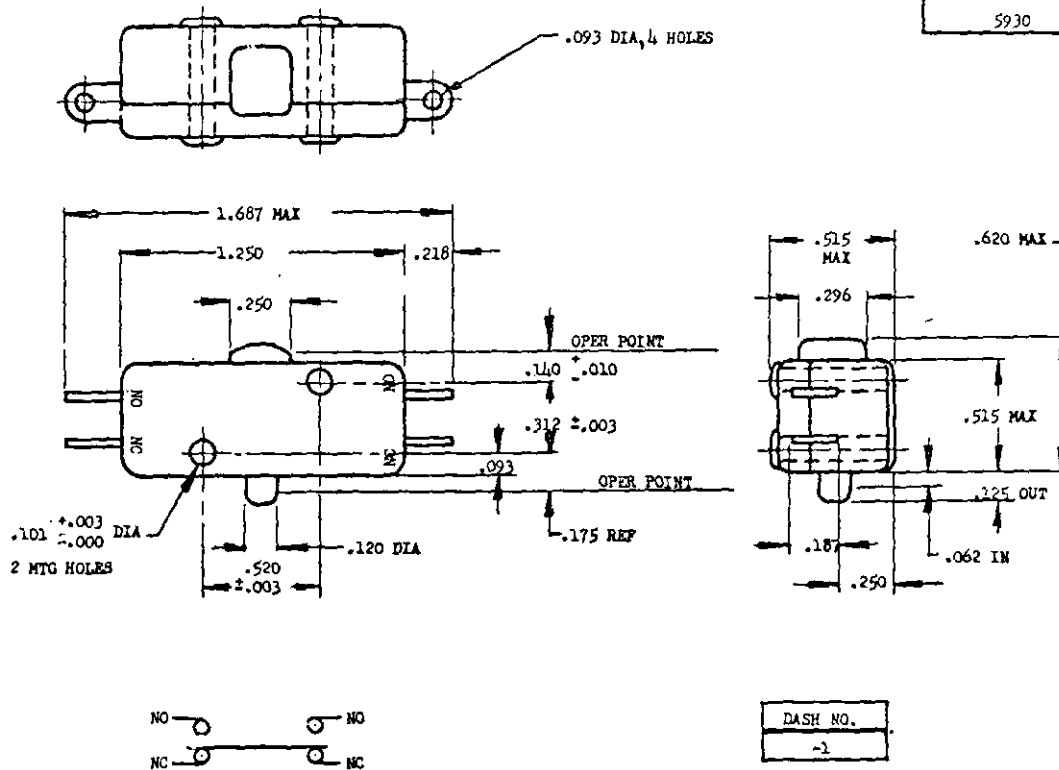


NOTICE—When Govt., drawings, specifications, or other data are used for any purpose other than in connection with a military related Govt. procurement operation, the United States Government thereby incurs no responsibility, nor any obligation whatsoever; and the fact that the Government may have furnished, furnished, or in any way supplied the said drawings, specifications, or other data is not to be regarded by implication or otherwise as in any manner licensing the holder or any other person or corporation, or conveying any right or permission to manufacture, use, or sell any patented invention that may in any way be related thereto.



- |     |  |                |
|-----|--|----------------|
| (B) | ACTUATING FORCE                              | .62 LBS MAX    |
| (E) | PRETRAVEL                                    | .060 MAX       |
| (F) | MOVEMENT DIFFERENTIAL                        | .025 MAX       |
| (G) | OVERTRAVEL                                   | .015 MIN       |
| (I) | MINIMUM OPERATING CYCLES                     | 100,000        |
| (J) | WEIGHT                                       | .03 LBS MAX    |
| (K) | STRENGTH OF PUSH BUTTON AND PUSH BUTTON STOP | 25 LBS         |
| (L) | STRENGTH OF TERMINALS                        | 5 LBS          |
| (N) | CONTACT GAP                                  | DOUBLE .020    |
| (P) | AMBIENT TEMPERATURE RANGE                    | -70° TO +190°C |
| (Q) | RESET BUTTON                                 |                |
|     | PRETRAVEL                                    | .060 MAX       |
|     | OVERTRAVEL                                   | .005 MIN       |

CURRENT CAPACITY 28 VOLTS DC			CURRENT CAPACITY 115 VOLTS 400 CYCLES AC		
RESISTIVE	INDUCTIVE	MOTOR	RESISTIVE	INDUCTIVE	MOTOR
10	10	6	10	10	6

**ⓑ CANCELLED** - For procurement use MIL-S-8805/14

MATERIAL: CASE, COVER AND PUSH BUTTON: DIALLYL PHTHALATE

DIMENSIONS IN INCHES. UNLESS OTHERWISE SPECIFIED, TOLERANCES: DECIMALS  $\pm .015$ .

EXACT SHAPE OF SWITCH OPTIONAL, PROVIDED DIMENSIONS SPECIFIED ARE NOT EXCEEDED.

TEST REQUIREMENT: FOR SHORT CIRCUIT TEST, USE SIZE AN-18 CABLE AND CIRCUIT BREAKER MS25017-10.

☆ U. S. GOVERNMENT PRINTING OFFICE: 1968-341-513/A-2342

FOR DESIGN FEATURE PURPOSES, THIS STANDARD TAKES PRECEDENCE OVER PROCUREMENT DOCUMENTS REFERENCED HEREIN. REFERENCED DOCUMENTS SHALL BE OF THE ISSUE IN EFFECT ON DATE OF INVITATIONS FOR BID.

P.A. Navy - AS Other Cust USAF 85	TITLE SWITCH, SENSITIVE MAINTAINED 10 AMP, 2 CIRCUIT, END SOLDER TERMINAL	MILITARY STANDARD MS25345(ASG)
PROCUREMENT SPECIFICATION MIL-S-6743	SUPERSEDES:	SHEET 1 OF 1