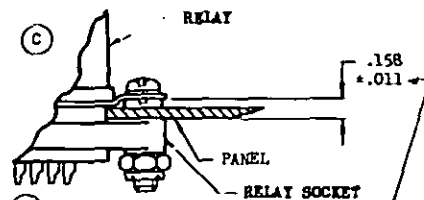
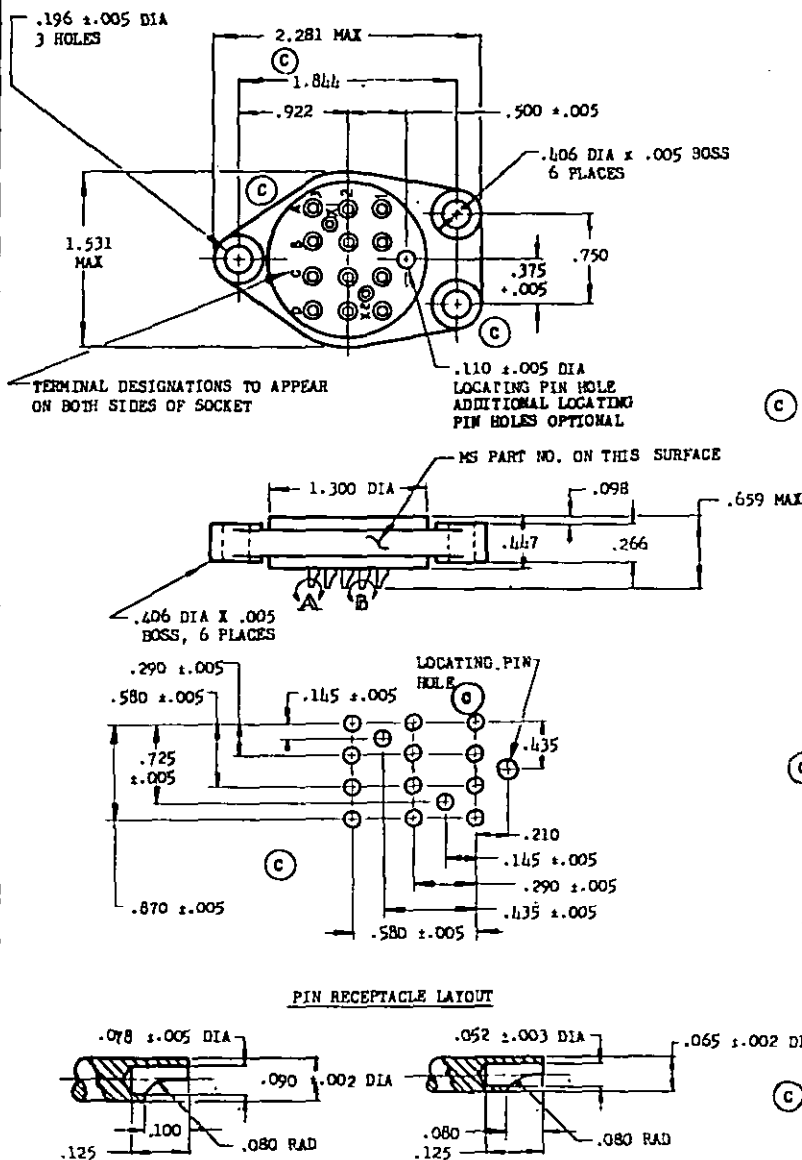
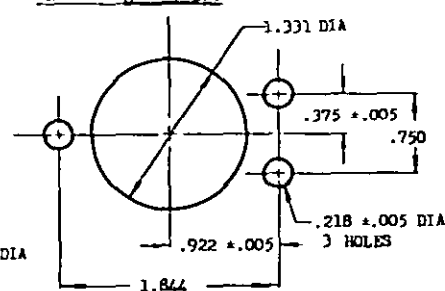
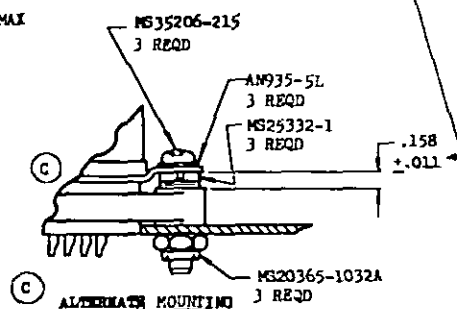


FED. SUP CLASS
C 5935

USE SPACERS SUPPLIED WITH MS25332-1 TO ACCOMPLISH THE INDICATED SPACING



TYPICAL MOUNTING HOLE LAYOUT

DASH NO.	MAX WT LB WITHOUT HARDWARE
-4	.080

(A) INSERTION AND WITHDRAWAL FORCES:

MEASURED WITH:

.0390 ±.0001 DIA PIN

.0615 ±.0001 DIA PIN

(B) VIBRATION, MIL-STD-202, METHOD 204,

CONDITION B, WITH MS25327 INSERTED

(C) CONTACT TABS, PARA 3.8, MIL-S-12883

(D) AMBIENT TEMPERATURE RANGE

(E) PIN ENTRY

(F) DIELECTRIC, MIN, WITHOUT MATING RELAY ENGAGED

SEA LEVEL

ALTITUDE (80,000 Ft)

(G) MATING RELAY

(H) PLATING, PARA 3.2.2

(I) MATERIAL: BODY; MIL-M-19833, TYPE GDI-30F

(J) CONTACT PLATING

1 OZ MIN

2 OZ MIN

10G, 10 TO 1500 CPS

NOT APPLICABLE

-65°C TO +120°C

PARA 3.3.1.2, MIL-C-5015

2500 VRMS

500 VRMS

MS25327

NOT APPLICABLE

GOLD PLATE MIL-G-45204, TYPE II, CLASS 2
OVER NICKEL QQ-N-290, CLASS 2, TYPE VII (QC)

DIMENSIONS IN INCHES. UNLESS OTHERWISE SPECIFIED, TOLERANCES: DECIMALS ±.010.

FOR DESIGN FEATURE PURPOSES. THIS STANDARD TAKES PRECEDENCE OVER PROCUREMENT DOCUMENTS REFERENCED HEREIN.
REFERENCED DOCUMENTS SHALL BE OF THE ISSUE IN EFFECT ON DATE OF INVITATIONS FOR BID.

P.A. Navy - WP	TITLE	MILITARY STANDARD
Other Cust USAF - 85	SOCKET, RELAY, ELECTRICAL, 14 CONTACTS, 10 AMP	MS25328(ASG)
PROCUREMENT SPECIFICATION MIL-S-12883	SUPERSEDES:	SHEET 1 OF 1