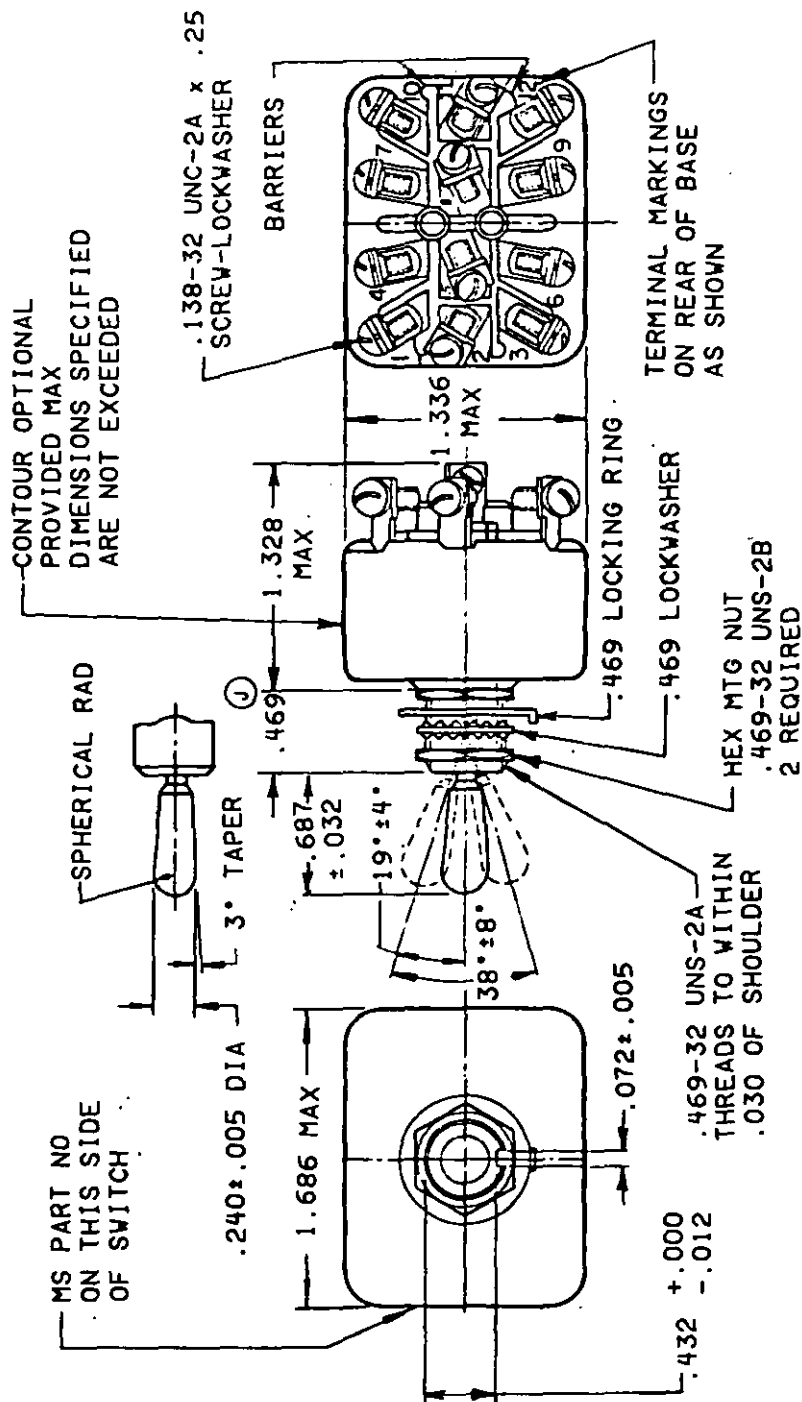


This military standard is approved for use by all Departments and Agencies of the Department of Defense. Selection for all new engineering and design applications and for repetitive use shall be made from this document when applicable.

FED. SUP CLASS
5930



ⓐ Denotes change

P.A Air Force-85 Other Cust Army-ER Navy-AS	International Import ASCCAS 12/16A	TITLE SWITCH, TOGGLE, POSITIVE BREAK, ENVIRONMENTALLY SEALED, SCREW TERMINAL, FOUR POLE, .469 MOUNTING BUSHING, 25 AMPERES	MILITARY STANDARD	
			MS 25308	
Procurement Specification MIL-S-8834		SUPERSEDES: MS0025308(USAF)	PAGE 1	OF 4

User activities: Army -
Navy -
Air Force -

Review activities: Army - AR, MI
Navy - EC
Air Force - 11, 17, 99

This military standard is approved for use by all Departments and Agencies of the Department of Defense. Selection for all new engineering and design applications and for repetitive use shall be made from this document when applicable.

FED. SUP CLASS
5930

DETAIL REQUIREMENTS:

MS DASH NO. TERMINAL SEALED	CIRCUIT MADE BETWEEN TERMINALS AS INDICATED WITH THE TOGGLE LEVER IN THESE POSITIONS:			CURRENT CAPACITY AMPERES PER POLE 28 VOLTS DC			CURRENT CAPACITY AMPERES PER POLE 115 VOLTS 400 HERTZ			CURRENT CAPACITY AMPERES PER POLE 115 VOLTS 60 HERTZ			LIFE LOW CURRENT LEVEL SWITCHING	SUPER- SEDED DASH NUMBER
	OPPOSITE KEYWAY SIDE	CENTER POSITION	KEYWAY SIDE	LAMP LOAD CIRCUIT	RESIS- TIVE CIRCUIT	INDUC- TIVE CIRCUIT	LAMP LOAD CIRCUIT	RESIS- TIVE CIRCUIT	INDUC- TIVE CIRCUIT	LAMP LOAD CIRCUIT	RESIS- TIVE CIRCUIT	INDUC- TIVE CIRCUIT		
-212		OFF	ON										30 mv	-211
-222		NONE	OFF											-221
-232	ON		ON											-231
-242	2-3, 5-6 18-9, 11-12		1-2, 4-5 7-8, 10-11											-241
-262		OFF	NONE											-261
-272	MON-ON 2-3, 5-6 18-9, 11-12	OFF	MON-ON 1-2, 4-5 7-8, 10-11	7	25	15	7	25	15	7	20	15	10 mA	-271
-282	NONE													-281
-292	ON		MON-OFF											-291
-302	2-3, 5-6 18-9, 11-12	NONE												-301
-312	ON		MON-ON											-311
	2-3, 5-6 18-9, 11-12	OFF	1-2, 4-5 7-8, 10-11											

1/ Application information ratings at room temperature.

APPROVED 28 Aug 58 REVISED (J) For changes see pages 1 & 3

P.A
Air Force-85
Other Cust
Army-ER
Navy-AS

International
Interest
ASCCAS
12/16A

TITLE SWITCH, TOGGLE, POSITIVE BREAK,
ENVIRONMENTALLY SEALED, SCREW
TERMINAL, FOUR POLE, .469
MOUNTING BUSHING, 25 AMPERES

MILITARY STANDARD

MS 25308

Procurement Specification
MIL-S-8834

SUPERSEDES: MS0025308(USAF)

PAGE 2 OF 4

FED. SUP CLASS
5930User activities: Army -
Navy -
Air Force -Review activities: Army - AR, M)
Navy - EC
Air Force - 11, 17, 99

This military standard is approved for use by all Departments and Agencies of the Department of Defense. Selection for all new engineering and design applications and for repetitive use shall be made from this document when applicable.

J
DETAIL REQUIREMENTS:

MS (DASH NO.) ENVIRONMENTAL SEALED	CURRENT CAPACITY AMPERES PER POLE 250 VOLTS 60 HERTZ AC			CURRENT CAPACITY AMPERES PER POLE 125 VOLTS DC			CURRENT CAPACITY AMPERES PER POLE 250 VOLTS DC			TYPE LOW CURRENT LEVEL SWITCHING 30 mV	SUPER- SEDED DASH NUMBER TOGGLE SEALED
	LAMP LOAD CIRCUIT	RESIS- TIVE CIRCUIT	INDUC- TIVE CIRCUIT	LAMP LOAD CIRCUIT	RESIS- TIVE CIRCUIT	INDUC- TIVE CIRCUIT	LAMP LOAD CIRCUIT	RESIS- TIVE CIRCUIT	INDUC- TIVE CIRCUIT		
-212											-211
-222											-221
-232											-231
-242											-241
-262											-261
-272		10	7		750 mA	-		500 mA	-	10 mA	-271
-282											-281
-292											-291
-302											-301
-312											-311

1/ Application information ratings at room temperature.

J For changes see pages" 1 & 3

REVISED

28 Aug 58

APPROVED

P.A.
Air Force-85
Other Cust
Army-ER
Navy-ASInternational
Interest
ASCCAS
12/16A

TITLE

SWITCH, TOGGLE, POSITIVE BREAK,
ENVIRONMENTALLY SEALED, SCREW
TERMINAL, FOUR POLE, .469
MOUNTING BUSHING, 25 AMPERES

MILITARY STANDARD

MS 25308

Procurement Specification
MIL-S-8834

SUPERSEDES:

PAGE 3 OF 4

FED. SUP CLASS
5930User activities: Army -
Navy -
Air Force -Review activities: Army - AR, MI
Navy - EC
Air Force - 11, 17, 99

This military standard is approved for use by all Departments and Agencies of the Department of Defense. Selection for all new engineering and design applications and for repetitive use shall be made from this document when applicable.

INCHES	mm	INCHES	mm
.005	0.13	.25	6.35
.012	0.30	.432	10.67
.030	0.76	.469	11.91
.032	0/81	.687	17.45
.072	1.83	1.328	33.73
.138	3.51	1.336	33.93
.240	6.10	1.686	42.82

NOTES:

1. Dimensions are in inches.
2. Metric equivalents are given for general information only.
3. Unless otherwise specified, tolerances are $\pm .010$ (0.25 mm) on decimals and $\pm .5^\circ$ on angles.
4. For hardware and terminal screw detail specifications see appendix of MIL-S-8834.
5. For design feature purposes, this standard takes precedence over acquisition documents referenced herein.
6. Referenced Government documents of the issue listed in that issue of the Department of Defense Index of Specifications and Standards (DoDISS) specified in the solicitation form a part of this standard to the extent specified herein.
7. The MS dash numbers supersede and are completely interchangeable with the superseded dash numbers.
8. Example of part numbers:
MS25306-212 = ON-OFF-ON, environmentally sealed switch.
MS25306-272 = MOM-ON, OFF, MOM-ON environmentally sealed switch.
9. Maximum weight: .1252 pound (57.2 grams).
10. Altitude requirements: 80,000 feet.
11. 115 V ac, 60 hertz electrical endurance tests are to be performed at room temperature and pressure.

APPROVED 28 Aug 58 REVISED 7 For changes see pages 1 & 3

P.A. Air Force-85 Other Cust Army-ER Navy-AS	International Interest ASCCAS 12/16A	TITLE SWITCH, TOGGLE, POSITIVE BREAK, ENVIRONMENTALLY SEALED, SCREW TERMINAL, FOUR POLE, .469 MOUNTING BUSHING, 25 AMPERES	MILITARY STANDARD MS 25308
Procurement Specification MIL-S-8834		SUPERSEDES: MS0025308(USAF)	PAGE 4 OF 4