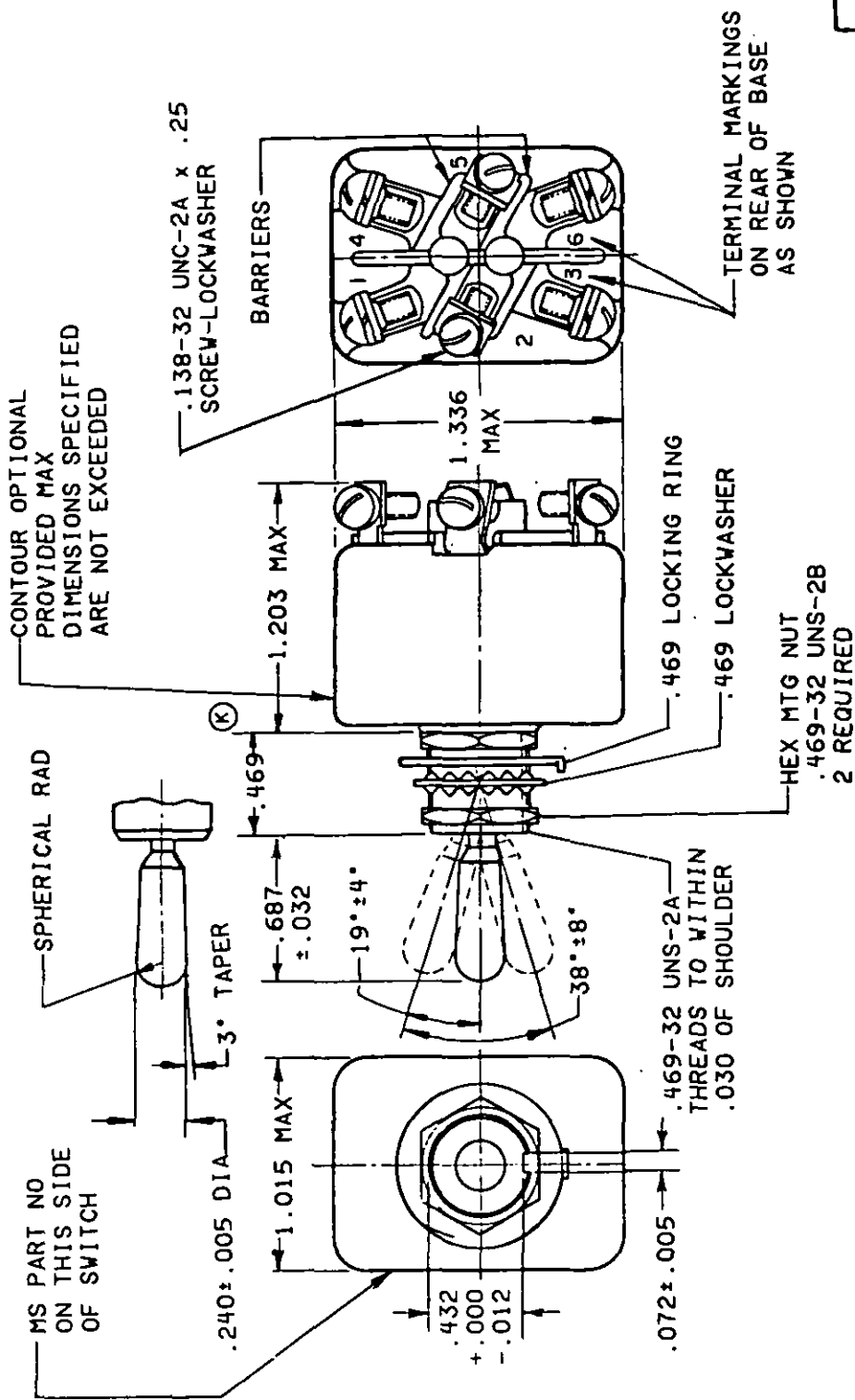


This military standard is approved for use by all Departments and Agencies of the Department of Defense. Selection for all new engineering and design applications and for repetitive use shall be made from this document when applicable.

Review activities: Army - AR, MI
Navy - EC
Air Force - 11, 17, 99

User activities: Army -
Navy -
Air Force -



(K) Denotes change

P.A. Air Force-85 Other Cust Army-ER Navy-AS	International Interest ASCCAS 12/16A	TITLE SWITCH, TOGGLE, POSITIVE BREAK, ENVIRONMENTALLY SEALED, SCREW TERMINAL, DOUBLE POLE, .469 MOUNTING BUSHING, 25 AMPERES SUPERSEDES: MS0025307 (USAF)	MILITARY STANDARD MS 25307 PAGE 1 OF 4
Procurement Specification MIL-S-8834			

DD FORM 1 MAY 73 672
AMSC N/A

(Coordinated) PREVIOUS EDITIONS OF THIS FORM ARE OBSOLETE.

DISTRIBUTION STATEMENT A. Approved for public release; distribution is unlimited.

5930-1331-08

FED. SUP CLASS
5930

APPROVED 28 Aug 58 REVISED (E) 11 Jul 72 (F) 24 Jul 73 (G) 23 Aug 76 (H) 20 Mar 81 (J) 18 Oct 85 (K) 30 SEP 86

User activities: Army -
Navy -
Air Force -

Review activities: Army - AR, MI
Navy - EC
Air Force - 11, 17, 99

This military standard is approved for use by all Departments and Agencies of the Department of Defense. Selection for all new engineering and design applications and for repetitive use shall be made from this document when applicable.

FED. SUP CLASS
5930

DETAIL REQUIREMENTS;

MS DASH NO. TERMINAL SEAL	CIRCUIT MADE BETWEEN TERMINALS AS INDICATED WITH THE TOGGLE LEVER IN THESE POSITIONS:			CURRENT CAPACITY AMPERES PER POLE 28 VOLTS DC			CURRENT CAPACITY AMPERES PER POLE 115 VOLTS 400 HERTZ			CURRENT CAPACITY AMPERES PER POLE 115 VOLTS 60 HERTZ			LIFE LOW CURRENT LEVEL SWITCHING	SUPER- SEDED DASH NUMBER
	OPPOSITE KEYWAY SIDE	CENTER POSITION	KEYWAY SIDE	LAMP LOAD CIRCUIT	RESIS- TIVE CIRCUIT	INDUC- TIVE CIRCUIT	LAMP LOAD CIRCUIT	RESIS- TIVE CIRCUIT	INDUC- TIVE CIRCUIT	LAMP LOAD CIRCUIT	RESIS- TIVE CIRCUIT	INDUC- TIVE CIRCUIT		
-212		OFF	ON 1-2,4-5										30 mv	-211
-222		NONE	OFF											-221
-232	ON 2-3, 5-6		ON 1-2,4-5											-231
-242		OFF	NONE											-241
-252		NONE												-251
-272	NOM-ON 2-3,5-6	OFF	NOM-ON 1-2, 4-5	7	25	15	7	25	15	7	20	15	10 mA	-271
-282	NONE													-281
-292	ON 2-3,5-6	NONE	NOM-OFF											-291
-302	OFF													-301
-312	ON 2-3,5-6	OFF												-311

1/ Application information ratings at room temperature.

APPROVED 28 Aug 58 REVISED (K) For changes see pages 1 & 3

P.A.
Air Force-85
Other Cust
Army-ER
Navy-AS

International
Interest
ASCCAS
12/16A

TITLE SWITCH, TOGGLE, POSITIVE BREAK,
ENVIRONMENTALLY SEALED, SCREW
TERMINAL, DOUBLE POLE, .469
MOUNTING BUSHING, 25 AMPERES

MILITARY STANDARD

MS 25307

Procurement Specification
MIL-S-8834

SUPERSEDES:
MS0025307 (USAF)

PAGE 2 OF 4

FED. SUP CLASS
5930

User activities: Army -
Navy -
Air Force -

Review activities: Army - AR, MI
Navy - EC
Air Force - 11, 17, 99

MS DASH NO. ENVIRONMENTAL SEALED	CURRENT CAPACITY AMPERES PER POLE 250 VOLTS 60 HERTZ AC			CURRENT CAPACITY AMPERES PER POLE 125 VOLTS DC			CURRENT CAPACITY AMPERES PER POLE 250 VOLTS DC			LIFE LOW CURRENT LEVEL SWITCHING 30 mV	SUPER- SEDED DASH NUMBER
	LAMP LOAD CIRCUIT	RESIS- TIVE CIRCUIT	INDUC- TIVE CIRCUIT	LAMP LOAD CIRCUIT	RESIS- TIVE CIRCUIT	INDUC- TIVE CIRCUIT	LAMP LOAD CIRCUIT	RESIS- TIVE CIRCUIT	INDUC- TIVE CIRCUIT		
-212											-211
-222											-221
-232											-231
-242											-241
-262											-261
-272		10	7		750 mA	-		500 mA	-	10 mA	-271
-282											-281
-292											-291
-302											-301
-312											-311

1/ Application information ratings at room temperature.

APPROVED 28 AUG 58 REVISED (K) FOR CHANGES SEE PAGES 1 & 3

P.A
AIR FORCE-85
Other Cust
ARMY - ER
NAVY - AS

International
Interest
ASCCAS
12/16A

TITLE SWITCH, TOGGLE, POSITIVE BREAK,
ENVIRONMENTALLY SEALED, SCREW
TERMINAL, DOUBLE POLE, .469
MOUNTING BUSHING, 25 AMPERES

MILITARY STANDARD

MS 25307

Procurement Specification
MIL-S-8834

SUPERSEDES:
MS0025307 (USAF)

PAGE 3 OF 4

FED. SUP CLASS
5930User activities: Army -
Navy -
Air Force -Review activities: Army - AR, MI
Navy - EC
Air Force - 11, 17, 99

This military standard is approved for use by all Departments and Agencies of the Department of Defense. Selection for all new engineering and design applications and for repetitive use shall be made from this document when applicable.

INCHES	mm	INCHES	mm
.005	0.13	.25	6.35
.012	0.30	.432	10.97
.030	0.76	.469	11.91
.032	0.81	.687	17.45
.072	1.83	1.015	25.78
.138	3.51	1.203	30.56
.240	6.10	1.336	33.93

NOTES:

1. Dimensions are in inches.
2. Metric equivalents are given for general information only.
3. Unless otherwise specified, tolerances are $\pm .010$ (0.25 mm) on decimals and $\pm .5^\circ$ on angles.
4. For hardware and terminal screw detail specifications see appendix of MIL-S-8834.
5. For design feature purposes, this standard takes precedence over acquisition documents referenced herein.
6. Referenced Government documents of the issue listed in that issue of the Department of Defense Index of Specifications and Standards (DoDISS) specified in the solicitation form a part of this standard to the extent specified herein.
7. The MS dash numbers supersede and are completely interchangeable with the superseded dash numbers.
8. Example of part numbers:
MS25306-212 = ON-OFF-ON, environmentally sealed switch.
MS25306-272 = MOM-ON, OFF, MOM-ON environmentally sealed switch.
9. Maximum weight: .0953 pound (43.2 grams).
10. Altitude requirements: 80,000 feet.
11. 115 V ac, 60 hertz electrical endurance tests are to be performed at room temperature and pressure.

For changes see pages 1 & 3

REVISED

APPROVED 28 Aug 58

P.A. Air Force-85 Other Cust Army-ER Navy-AS	International Interest ASCCAS 12/16A	TITLE SWITCH, TOGGLE, POSITIVE BREAK, ENVIRONMENTALLY SEALED, SCREW TERMINAL, DOUBLE POLE, .469 MOUNTING BUSHING, 25 AMPERES	MILITARY STANDARD MS 25307
Procurement Specification MIL-S-8834		SUPERSEDES: MS0025307 (USAF)	PAGE 4 OF 4