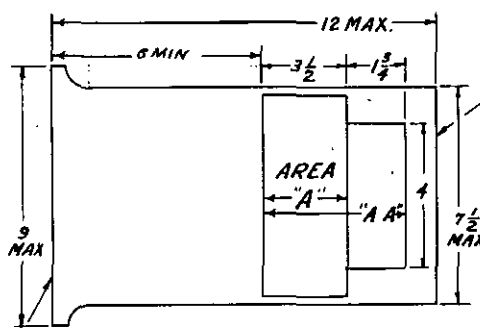
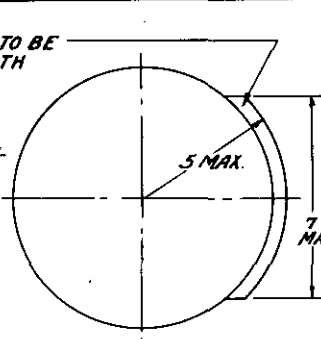


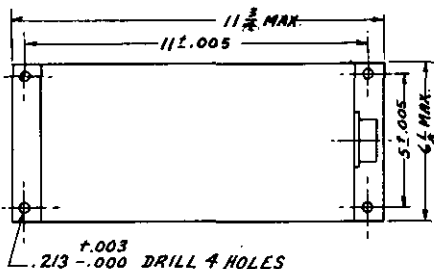
TERMINAL BLOCK TO BE
IN ACCORDANCE WITH
MS 33631

LOAD TERMINALS
IN AREA "A"
ALL OTHER TERMINALS
IN AREA "A-A"

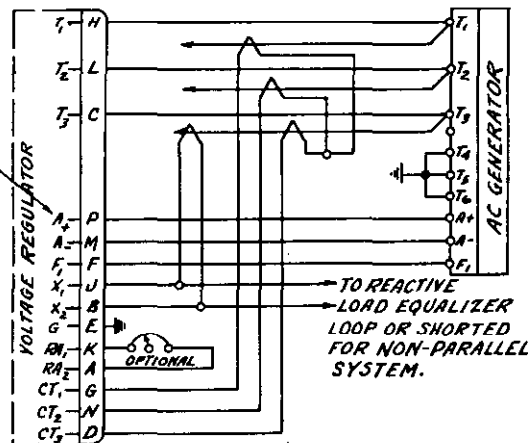
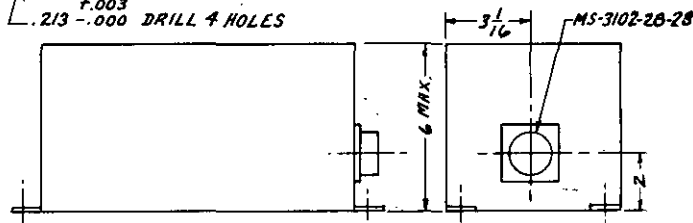


FLANGE SUITABLE
FOR MOUNTING
MS 25159 OR
MS 25160

MOUNTING FLANGE AND COUPLING IN ACCORDANCE WITH
AS 474 TYPE XXI-A.



TERMINAL DESIGNATED
"S" FOR BRUSHLESS
TYPE



GENERATOR DATA		REGULATOR DATA	
Rated Voltage	120/208 V	Regulator Weight Max	8 lb.
Rated Output	20 KVA	Voltage Regulation Limits for all conditions as per Figure 8 of specifications.	
Phase	3		
Speed Range	7600-8400 RPM		
Max Speed for Regulation	9000 RPM		
Over-speed	11000 RPM		
Rated Power Factor	.75 lagging to 1.0		
Efficiency Min at Rated Load	75%		
Max Weight	95 lb.		
Overhung Moment, Max	500 in. lb.		
Frequency	380-420 CPS		

Part No.	Type	File
MS-25285-1	with brushes	
MS-25285-2	brushless	

NOTES

- The aircraft manufacturer shall allow connecting lead length and blast tube length for the limiting generator dimensions shown on this drawing.
- The aircraft manufacturer shall allow adequate clearance for installing and removing the generator shown on this drawing from the aircraft.
- Prior to delivery the regulator shall be tested at 125/200 phas or 125/200 phas.
- Generator to be designed for use with adapter for testing capable of installing on pad and drive conforming to MS-20006.
- All outline dimensions are limiting dimensions only.
- The system shall be so designed that upon removal of any connector plug the generator and regulator shall be de-energized.

Ⓐ CANCELLED

AFTER 28 APRIL 1966 NO SUPERSEDING STANDARD

Tolerance all dimensions ± 1/16 inch unless otherwise noted. All dimensions in inches.

CUSTODIANS Navy - BuAer	OTHER INT. A - N - AF -	MILITARY STANDARD	MS25285 (AER)
		GENERATOR AND REGULATOR, A.C. AIRCRAFT INTEGRAL EXCITER ; CLASS C, 20KVA 3Ø, 380-420CPS	
PROCUREMENT SPECIFICATION MIL-G-6099-A		SUPERSEDES:	SHEET 1 OF 1