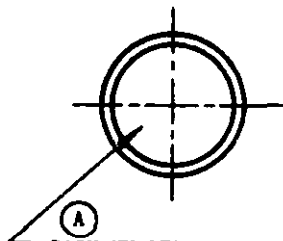
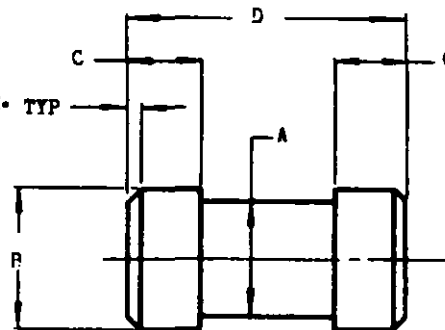


FED. SUP CLASS  
5935

(A) DASH NUMBER TO BE MOLDED  
INTO PLUG HEAD USING LARGEST  
POSSIBLE FIGURES



DASH NO.	REF TREE SIZE	A ±.005	R ±.007	C ±.005	D ±.010	COLOR CODE
(A) -20	24-20	.090	.115	.094	.375	RED
-16	22-16	.110	.145			BLUE
-12	14-12	.145	.180	.125	.469	YELLOW
-8	10-8	.195	.228			WHITE

MATERIAL: NYLON MOLDING MATERIAL, SPECIFICATION MIL-P-17091, TYPE II.  
FINISH: NONE  
DIMENSIONS IN INCHES.

(A) DASH NO. ADDITIONALLY SIGNIFICANT IN THAT IT CORRESPONDS DIRECTLY TO MIL-C-5015  
AND MIL-C-25482 CONNECTOR CONTACT SIZES.

FOR DESIGN FEATURE PURPOSES, THIS STANDARD TAKES PRECEDENCE OVER PROCUREMENT  
DOCUMENTS REFERENCED HEREIN.  
REFERENCED DOCUMENTS SHALL BE OF THE ISSUE IN EFFECT ON DATE OF INVITATIONS FOR BIDS.

P.A. Navy - Wep	TITLE PLUG, END SEAL, ELECTRIC CONNECTOR	MILITARY STANDARD
Other Cust Army - SigC USAF - AFSC		MS25251
Procurement Specification NONE	SUPERSEDES:	SHEET 1 OF 1

NOTICE—When Government drawings, specifications, or other data are used for any purpose other than in connection with a definitely related Government procurement operation, the United States Government thereby incurs no responsibility, nor any obligation whatsoever; and the fact that the Government may have furnished, furnished, or in any way supplied the said drawings, specifications, or other data is not to be regarded by implication or otherwise as in any manner licensing the holder or any other person or corporation, or conveying any rights or permission to manufacture, use, or sell as patented invention that may in any way be related thereto.

This military standard is approved by the Department of Defense and is mandatory as to all activities. Selection for all new engineering and design applications and for repetitive use shall be made from this document.