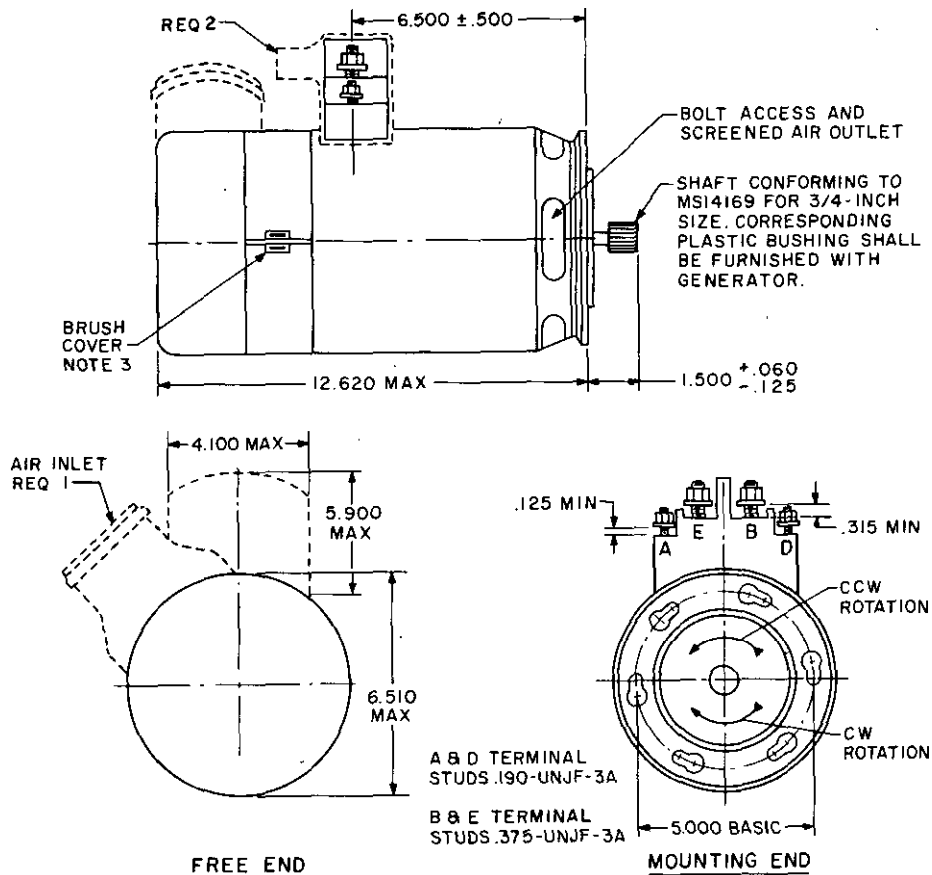


FED. SUP CLASS
6115

GENERATOR CHARACTERISTICS

PROPERTY	VALUE
RATED VOLTAGE, VOLTS	30
RATED CURRENT, AMPERES	400
RATED SPEED RANGE, RPM	4000-8000
CONTINUOUS OPERATING SPEED, RPM	6000
MINIMUM SPEED FOR REGULATION, RPM	4500
MAXIMUM SPEED FOR REGULATION, RPM	10000
OVERSPEED, RPM	11000
REGULATED FIELD CURRENT - MAXIMUM, AMPERES	8
POWER TO BE DISSIPATED BY REGULATOR-MAX., WATTS	90
WEIGHT-MAXIMUM, POUNDS	53
EFFICIENCY - MINIMUM, 70 TO 100 PCT LOAD, PERCENT	65
MOMENT OF OVERHANG-MAXIMUM, POUND-INCHES	265
MINIMUM NATURAL FREQUENCY, HERTZ	275
SHEAR SECTION, POUND-INCHES	1700-2000
OVERLOAD CURRENT AT 6000 RPM, AMPERES	
200 PERCENT FOR 5 SECONDS	800
150 PERCENT FOR 2 MINUTES	600

Ⓢ CANCELLED SUPERSEDED BY MS3364

P.A. NAVY - AS Other Cost	TITLE GENERATOR, DIRECT CURRENT, 400 AMPERE, CLASS A, 4000 TO 8000 RPM	MILITARY STANDARD MS25247(AS)
PROCUREMENT SPECIFICATION MIL-G-6162	SUPERSEDES: AN3624 FOR NAVAIR USE	SHEET 1 OF 2

DD FORM 672-1 (Limited coordination)
1 MAR 72

PREVIOUS EDITIONS OF THIS FORM ARE OBSOLETE. PROJECT NO. N6115-N401

PLATE NO. 23071