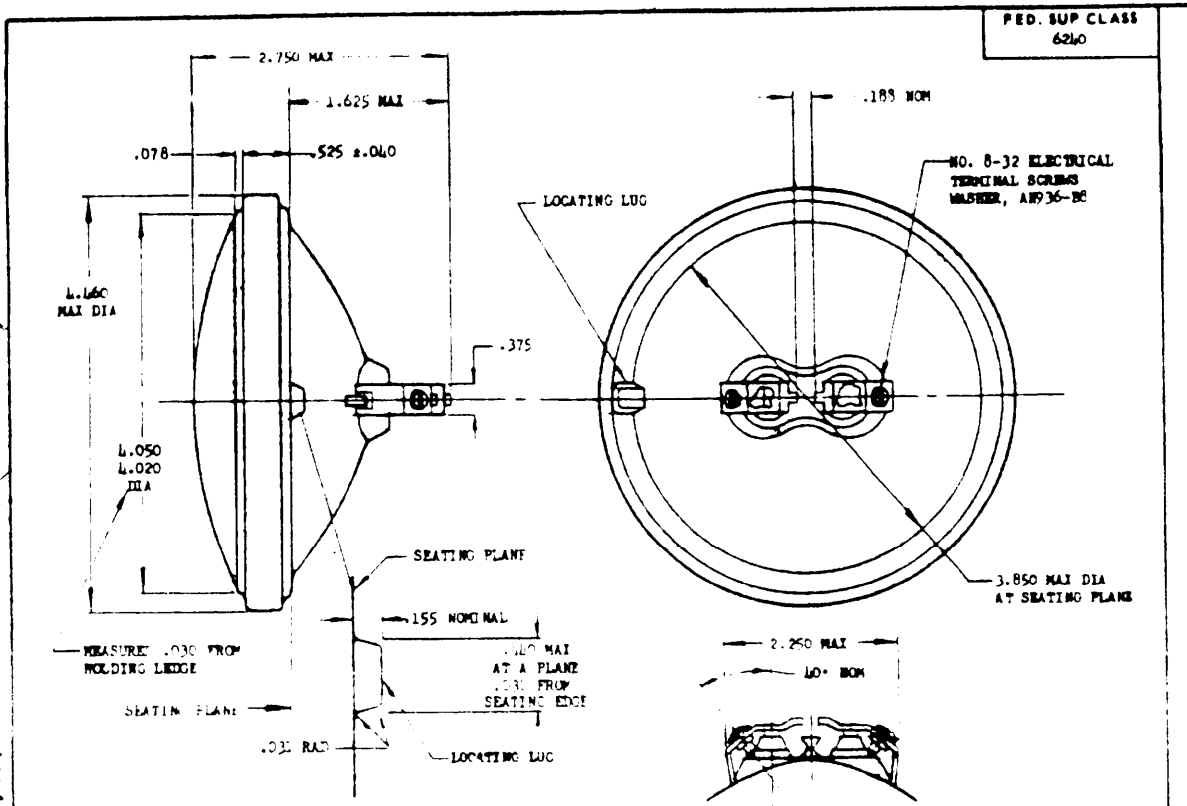


NOTICE: When Government drawings, specifications, or other data are used for any purpose other than in connection with a definitely related Government procurement operation, the United States Government thereby incurs no responsibility, nor any obligation, and the fact that the Government may have furnished, furnished information, or in any way supplied the land drawings, specifications, or other data is not to be taken as an endorsement or approval of any manner, method, or any other feature or as representing a warranty or other form of permission to manufacture, use, or sell any patented invention that might may be related thereto.

This standard has been approved by the Board (Department of the Navy) and the Office of the Chief of Naval Operations, and is mandatory for use by the Navy. All other military activities are required to comply with this standard where applicable.



DATE AND TRADE NO.	RATED VOLTS	DESIGN AMPERES	FILAMENT TYPE	RATED LIFE HOURS	MIN BEAM DIMENSIONS THIRD OPTICAL AXIS				MAX DEVIATION OF BEAM AXIS FROM MECHANICAL AXIS	COVER GLASS NOM RAD
					CANDLEPOWER		ANGLE			
					INITIAL	AT 70% LIFE	HORIZONTAL	VERTICAL		
4501	26	5.2	4CC-E	50	35,000 5,000	24,500 3,500	4° 0°	4° 0°	2°	4.5

THE DATE NO. AND THE NFR'S TRADEMARK, OR AN ABBREVIATION OF THE NFR'S NAME, SHALL BE MARKED ON THE BACK OF EACH LAMP. OTHER REQUIREMENTS HEREON SHALL BE MET WITH THE RATED VOLTAGE LISTED ABOVE, EITHER DC OR AC: 60 CYCLES PER SECOND, APPLIED TO THE TERMINALS OF THE LAMP.

THE ENVELOPE OF EACH LAMP SHALL BE COLOR NON-SELECTIVE. MS25239-4501 REPLACES AND IS INTERCHANGEABLE WITH AN3126-4501. LIFE: THE AVERAGE LIFE OF THE LAMPS UNTIL BURNOUT OF ANY ONE FILAMENT SHALL BE AT LEAST 20 HOURS.

LIFE TEST CYCLE: 65 ±5 CYCLES PER MINUTE. LAMP TO BE ON DURING 2/3 ±1/6 OF EACH CYCLE. DIMENSIONS IN INCHES, UNLESS OTHERWISE SPECIFIED, TOLERANCES: DECIMALS ±.016, ANGLES ±1°.

ENTIRE STANDARD REGRANDED.

FOR DESIGN FEATURE PURPOSES, THIS STANDARD TAKES PRECEDENCE OVER PROCUREMENT DOCUMENTS REFERENCED HEREIN. REFERENCED DOCUMENTS SHALL BE OF THE ISSUE IN EFFECT ON DATE OF INVITATIONS FOR BID.

P.A. Navy - Map	TITLE	MILITARY STANDARD
Other Cost	LAMP, INCANDESCENT - PAR-36 BULB, SCREW TERMINAL BASE, SIGNALING	MS25239(ASG)
USAF - AFSC		
PROCUREMENT SPECIFICATION	SUPersedes: AN3126	SHEET 1 OF 1
NTL-6963		

DD FORM 672-1

PREVIOUS EDITIONS OF THIS FORM ARE OBSOLETE

APPROVED 12 Aug 57 REVISED 27 Jul 62