

INCH-POUND
 MS25225H
 21 December 2005
 SUPERSEDING
 MS25225G
 20 December 1982

DETAIL SPECIFICATION SHEET

GUARD, SWITCH, 3 POSITION

This specification is approved for use by all
 Departments and Agencies of the Department of Defense.

The complete requirements for acquiring the switch described herein shall consist of this specification and the latest
 issue of MIL-DTL-7703.

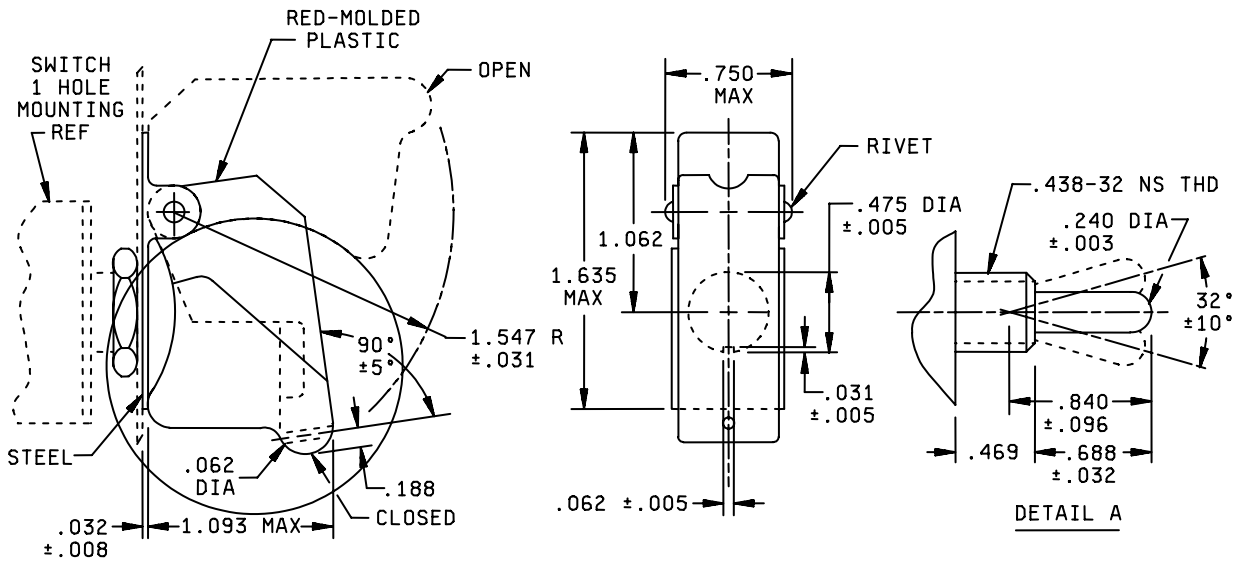


FIGURE 1. Dimensions and configuration -1.

MS25225H

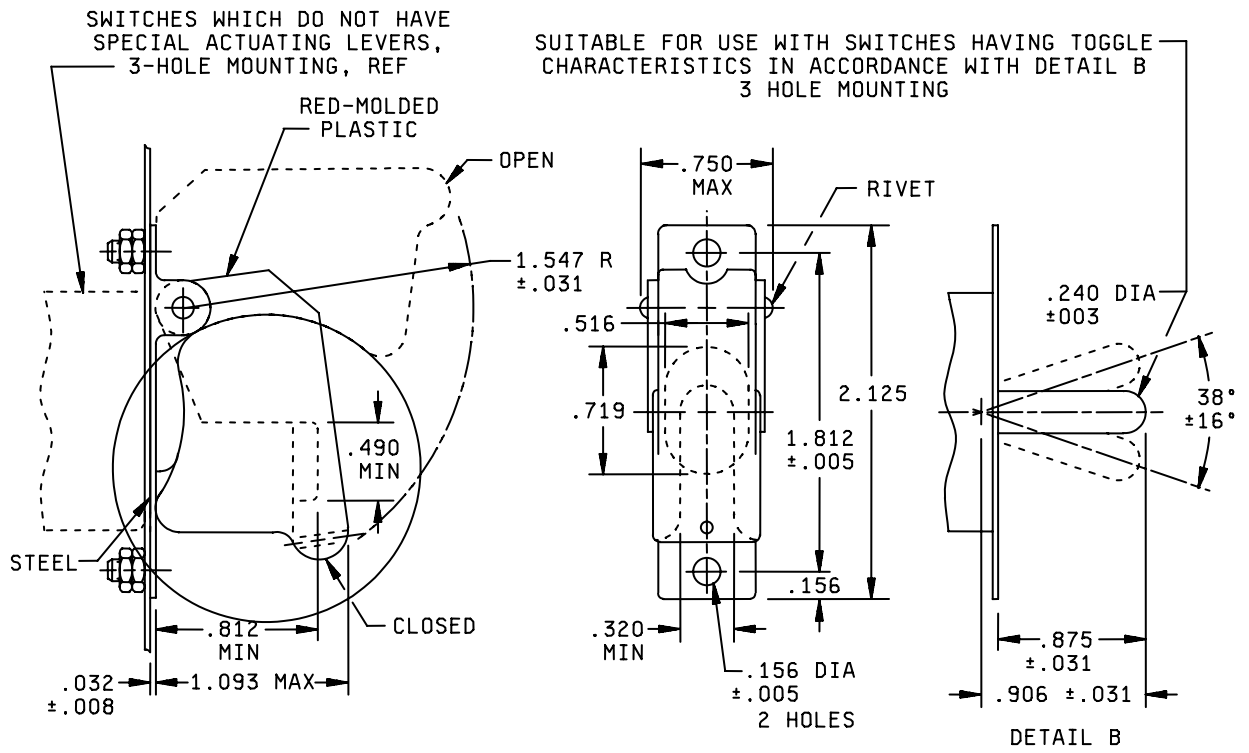


FIGURE 2. Dimensions and configuration -2.

MS25225H

TABLE I. Detail requirements.

Dash No.	Type	Panel Thickness (REF)	Operating Force	Remarks
-1	1-Hole Mounting	.050 to .248	1.0 to 2.5 LB	Identical to -1, Except Keyway is Rotated 180°
-2 <u>1/</u>	3-Hole Mounting	.050 to .081		
-3	1-Hole Mounting	.050 to .248		

Notes:

Material: Plastic molded red, color STD 11136, FED-STD-595.

Finish: Corrosion resistant, zinc plate ASTM B633, black enamel, lusterless, color 37038 or semigloss, color 27038, FED-STD-595 or equivalent.

Guard shall remain in either open or closed position.

Opening the guard shall not change the position of the switch contacts.

When lever is in upward position, closing guard shall throw lever to center position.

When lever is in downward position, closing guard shall not thro lever to center position.

Referenced Documents

MIL-DTL-7703

ASTM-B633E

FED-STD-595

Marginal notations are not used in this revision to identify changes with respect to the previous issue due to the extent of the changes.

Custodians:

Army - CR

Navy - AS

Air Force - 11

DLA - CC

Preparing activity:

DLA - CC

(Project 5930-2005-008)

Review activities:

Air Force – 99

NOTE: The activities listed above were interested in this document as of the date of this document. Since organizations and responsibilities can change, you should verify the currency of the information above using the ASSIST Online database at <http://assist.daps.dla.mil/>.