

INCH-POUND

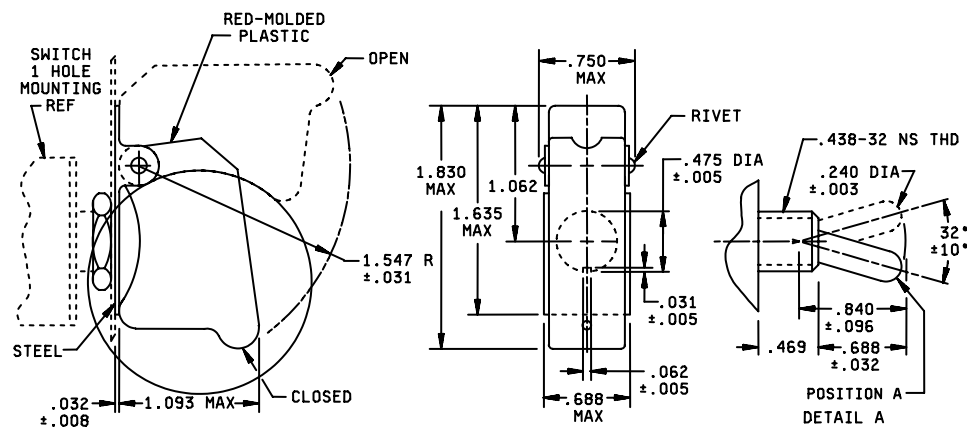
MS25224H  
 1 February 2006  
 SUPERSEDING  
 MS25224G  
 20 December 1982

## DETAIL SPECIFICATION SHEET

## GUARD, SWITCH, 2 POSITION

This specification is approved for use by all  
 Departments and Agencies of the Department of Defense.

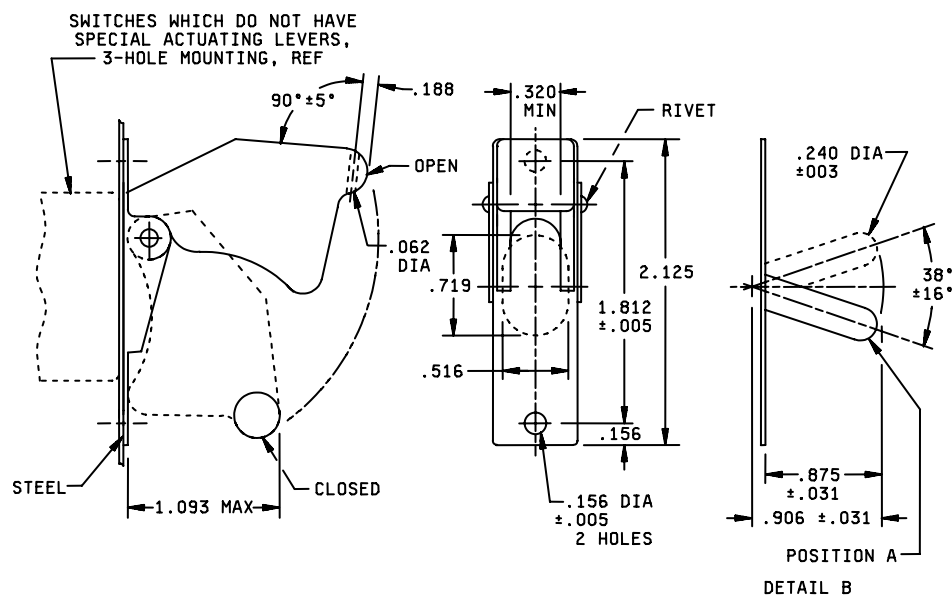
The complete requirements for acquiring the switch described herein shall consist of this specification and the latest issue of MIL-DTL-7703.



SUITABLE FOR USE WITH SWITCHES HAVING TOGGLE CHARACTERISTICS IN ACOORDANCE  
 WITH DETAIL A (1-HOLE MOUNTING)

FIGURE 1 Dimensions and configuration.

## MS25224H



-2

SUITABLE FOR USE WITH SWITCHES HAVING TOGGLE CHARACTERISTICS IN ACCORDANCE WITH DETAIL B (3-HOLE MOUNTING)

DASH NO.	TYPE	PANEL THICKNESS (REF)	OPERATING FORCE	REMARKS
-1	1- HOLE MOUNTING	.050 TO .248	1.0 TO 2.5 LB	IDENTICAL TO -1, EXCEPT KEYWAY IS ROTATED 180°
-2	3-HOLE MOUNTING	.050 TO .081		
-3	1-HOLE MOUNTING	.050 TO .248		

FIGURE1. Dimensions and configuration Continued

## MS25224H

Inches	mm	Inches	mm	Inches	mm
.003	.08	.156	3.96	.840	21.34
.005	.13	.188	4.77	.875	22.22
.008	.20	.240	6.10	.906	23.01
.016	.41	.248	6.30	1.062	26.97
.031	.79	.320	8.13	1.093	27.76
.032	.81	.469	11.91	1.547	39.29
.050	1.27	.475	12.06	1.635	41.53
.062	1.57	.516	13.11	1.812	46.02
.081	2.06	.688	17.47	1.830	46.48
.094	2.39	.719	18.26	2.125	53.98
.096	2.44	.750	19.05		

## NOTES:

1. Dimensions are in inches.
2. Unless otherwise specifies, tolerances are  $\pm .016$  on decimals.
3. For design feature purposed, this standard takes precedence over procurement documents referenced herein.
4. Referenced documents shall be of the issue in effect on date of invitations for bid.
5. Material: Plastic molded, red, number 11136, FED-STD- 595. Steel, commercial, shall be smooth and free from burrs.
6. Finish: Zinc plate, ASTM B 633 , type III, or cadmium plate, SAE-AMS-QQ-P-416, type III, with optional supplementary treatment per MIL-C-8514 or DOD-P-15328, black enamel, lusterless, color number 37038 or semigloss, color number 27038, FED-STD- 595 or equivalent.

## REQUIREMENTS

Guard shall remain in either the open or closed position

Opening the guard shall not change position of the switch contacts.

Toggle switch shown in position A.

Closing the guard shall place the toggle in position A.

## Referenced documents

MIL-DTL-7703  
 SAE-AMS-QQ-P-416  
 DOD-P-15328D  
 ASTM-B-633  
 MIL-C-8514  
 FED-STD-595

Marginal notations are not used in this revision to identify changes with respect to the previous issue due to the extent of the changes.

## MS25224H

### Custodians:

Army – CR  
Navy – AS  
Air Force – 11  
DLA – CC

Preparing activity  
DLA – CC  
(Project 5930-2005-007)

### Review activities:

Army – AV  
Air Force – 99

NOTE: The activities listed above were interested in this document as of the date of this document. Since organizations and responsibilities can change, you should verify the currency of the information above using the ASSIST Online database at <http://assist.daps.dla.mil/>.