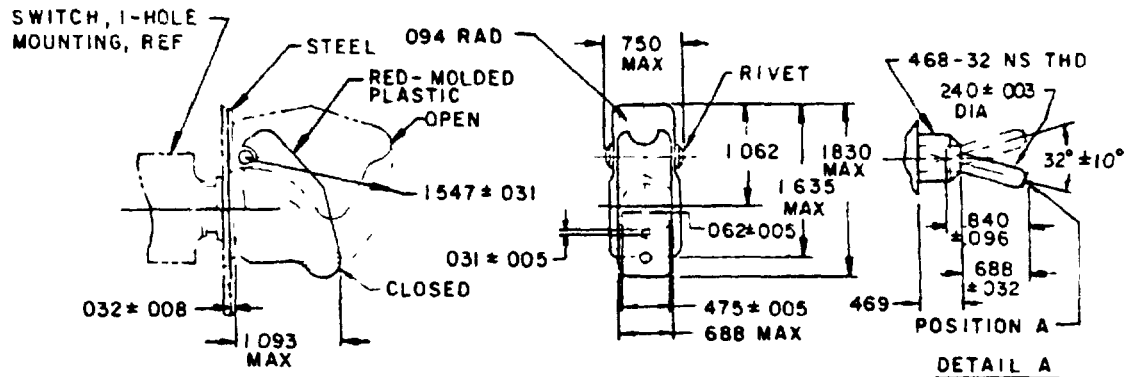
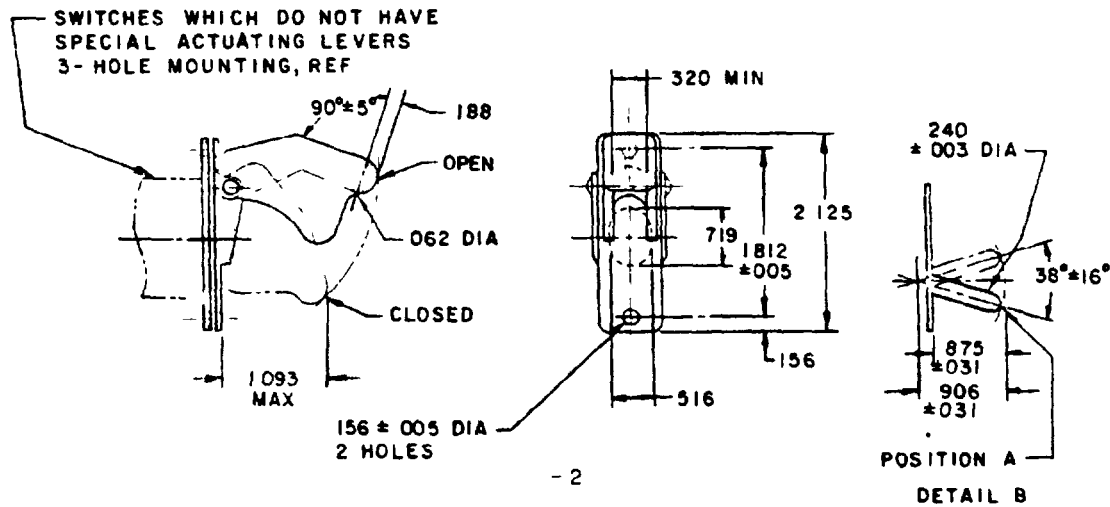


FED SUP CLASS
5930

-1

SUITABLE FOR USE WITH SWITCHES HAVING TOGGLE CHARACTERISTICS IN ACCORDANCE WITH DETAIL A
(1-HOLE MOUNTING)



-2

SUITABLE FOR USE WITH SWITCHES HAVING TOGGLE CHARACTERISTICS IN ACCORDANCE WITH DETAIL B
(3-HOLE MOUNTING)

DASH NO	TYPE	PANEL THICKNESS (REF)	OPERATING FORCE	REMARKS
-1	1-HOLE MOUNTING	050 TO 248	1.0 TO 2.5 LB	IDENTICAL TO -1, EXCEPT KEYWAY IS ROTATED 180°
-2 1/	3-HOLE MOUNTING	050 TO 081		
-3	1-HOLE MOUNTING	050 TO 248		

1/ INACTIVE FOR NEW DESIGN - FOR REPLACEMENT ONLY

Ⓢ denotes changes

P A AF-85	International Interest	TITLE	MILITARY STANDARD
Other Cust ARMY-ER NAVY-AS		GUARD, SWITCH, 2 POSITION	MS25224
Procurement Specification MIL-G-7703		SUPSEDES AN 3028	PAGE 1 OF 2

FED SUP CLASS
5930ARMY -
NAVY -
AIR FORCE -

User activities

ARMY -
NAVY -
AIR FORCE -99

Review activities

This military standard is approved for use by all Departments and Agencies of the Department of Defense. Selection for all new engineering and design applications and for repetitive use shall be made from this document when applicable.

G	INCHES		MM		INCHES		MM		INCHES		MM	
	.003	.08	.156	3.96	.840	21.34						
	.005	.13	.188	4.77	.875	22.22						
	.008	.20	.240	6.10	.906	23.01						
	.016	.41	.248	6.30	1.062	26.97						
	.031	.79	.320	8.13	1.093	27.76						
	.032	.81	.469	11.91	1.547	39.29						
	.050	1.27	.475	12.06	1.635	41.53						
	.062	1.57	.516	13.11	1.812	46.02						
	.081	2.06	.688	17.47	1.830	46.48						
	.094	2.39	.719	18.26	2.125	53.98						
	.096	2.44	.750	19.05								

NOTES

1. Dimensions are in inches.
2. Unless otherwise specified, tolerances are ± 0.016 on decimals.
3. Material Plastic, molded, red, number 11136, Federal Standard 595. Steel, commercial, shall be smooth and free from burrs.
4. Finish Zinc plate, QQ-Z-325, type III, or cadmium plate, QQ-P-416, type III, with optional supplementary treatment per MIL-C-8514 or DOD-P-15328, black enamel, lusterless, color number 37038 or semigloss, color number 27038, Federal Standard 595 or equivalent.
5. Guard shall remain in either the open or closed position.
6. Opening the guard shall not change position of switch contacts.
7. Toggle switch shown in position A.
8. Closing the guard shall place the toggle in position A.
9. For design feature purposes, this standard takes precedence over procurement documents referenced herein.
10. Referenced documents shall be of the issue in effect on date of invitations for bid

REVISED G FOR CHGS SEE PG 2

APPROVED

P A AF-B5	International Interest	TITLE	MILITARY STANDARD
Other Cust ARMY-ER NAVY-AS		GUARD, SWITCH, 2 POSITION	MS25224
Procurement Specification MIL-G-7703	SUPERSEDES	AN 302B	PAGE 2 OF 2