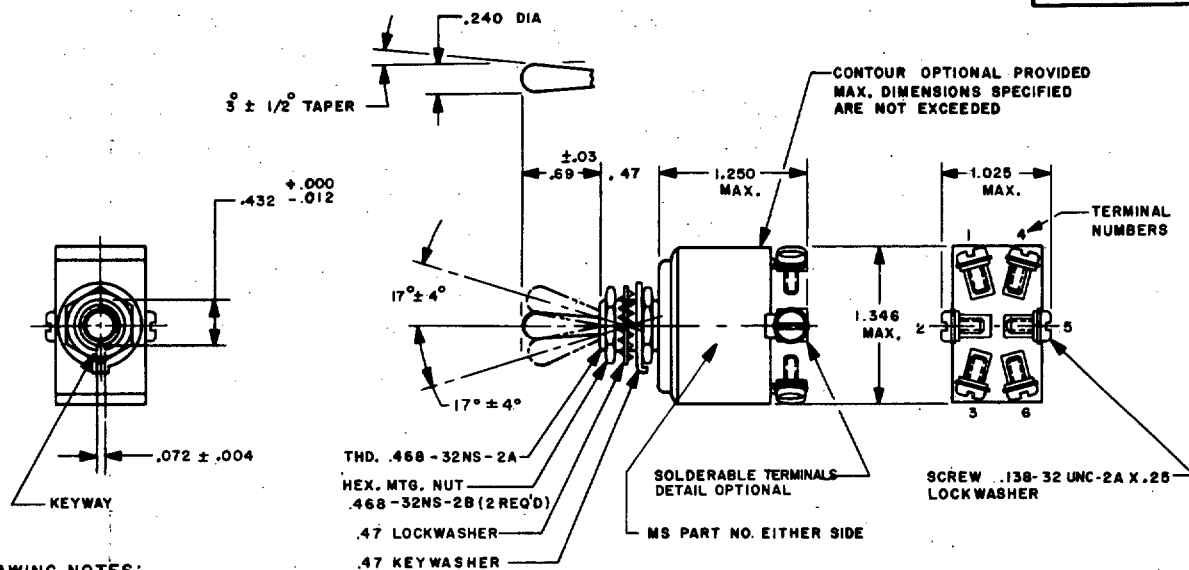


FED. SUP CLASS
5930

Reviewer - AF 11, ES, AV, EC



DRAWING NOTES:

1. FOR HARDWARE AND TERMINAL SCREW DETAIL SPECIFICATIONS SEE SUPPLEMENT OF MIL-S-83731.
2. ALL DIMENSIONS ARE IN INCHES.
3. UNLESS OTHERWISE SPECIFIED, TOLERANCE IS $\pm .02$ ON TWO PLACE DECIMALS AND $\pm .005$ ON THREE PLACE DECIMALS.

DETAIL REQUIREMENTS:

| MS PART NO | CIRCUIT WITH TOGGLE LEVER IN | | | CURRENT CAPACITY (AMPERES PER POLE) | | | | | | | |
|------------|------------------------------|---------------|----------------------------|-------------------------------------|--------------------------|----------------------|----------------------|---|--------------------------|----------------------|----------------------|
| | | | | Direct current | | | | Alternating current (400 & 60 hertz) | | | |
| | KEYING SIDE | CENTER | OPPOSITE KEYING SIDE | Continuous | Lamp- load circuit | Resistive circuit | Inductive circuit | Continuous | Lamp- load circuit | Resistive circuit | Inductive circuit |
| | | | | 28 volts | 28 volts | 28 volts | 28 volts | 115 volts | 115 volts | 115 volts | 115 volts |
| MS25201-4 | ON 1-2 4-5 | ON 2-1 5-6 | ON 2-3 5-6 | | | | | | | | |
| MS25201-5 | MOM ON 1-2 4-5 | ON 2-1 5-6 | ON 2-3 5-6 | | | | | | | | |
| MS25201-6 | MOM-ON 1-2 4-5 | ON 2-1 5-6 | MOM-ON 2-3 5-6 | -- | 5 | 18 | 10 | -- | 2 | 11 | 8 |
| MS25201-7 | ON 1-2 4-5 | ON 2-3 4-5 | ON 2-3 5-6 | | | | | | | | |
| MS25201-8 | MOM-ON 1-2 4-5 | ON 2-3 4-5 | ON 2-3 5-6 | | | | | | | | |
| MS25201-9 | MOM-ON 1-2 4-5 | ON 2-3 4-5 | MOM-ON 2-3 5-6 | | | | | | | | |

1. ALL SWITCHES ON THIS STANDARD ARE DESIGNED SO THAT THE MOVEMENT OF THE SWITCH MECHANISM IS OPPOSITE TO THAT OF THE TOGGLE LEVER.
2. MAXIMUM WEIGHT IS .10 POUNDS.
3. NOT TO BE USED FOR TRANSFERRING PHASES EXCEEDING 115 VOLTS LINE TO LINE.
4. ENDURANCE: ELECTRICAL 10,000 CYCLES, MECHANICAL 20,000 CYCLES.

NOTES:

1. DASH NUMBERS 1, 2, AND 3 HAVE BEEN USED TO DESIGNATE TWO DIFFERENT CIRCUIT ARRANGEMENTS. PRIOR TO REVISION C, THIS STANDARD COVERED ONLY 2-3, 4-5 CENTER OFF POSITIONS. WITH REVISION C, THESE CENTER OFF POSITIONS WERE DELETED ENTIRELY AND 2-1, 5-6 CENTER OFF POSITIONS ADOPTED WITHOUT CHANGE IN DASH NUMBERS. THE LATTER ARRANGEMENT WAS CONTINUED THROUGH REVISION D.
2. DASH NUMBERS 1, 2, AND 3 ARE CANCELLED AFTER 15 MARCH 1963. USE -4 THROUGH -9.
3. DASH NUMBERS 7, 8 AND 9 ARE INACTIVE FOR DESIGN AFTER 15 MARCH 1963, BUT MAY BE USED FOR REPLACEMENTS.
4. DASH NUMBERS 1, 2, AND 3 WITH CENTER ON POSITIONS 2-1 AND 5-6 ARE SUPERSEDED BY DASH NUMBERS 4, 5 AND 6 RESPECTIVELY.
5. DASH NUMBERS 1, 2, AND 3 WITH CENTER ON POSITIONS 2-3 AND 4-5 ARE SUPERSEDED BY DASH NUMBERS 7, 8 AND 9 RESPECTIVELY.

REFERENCED DOCUMENTS SHALL BE OF THE ISSUE IN EFFECT ON THE DATE OF INVITATION FOR BID.
FOR DESIGN FEATURE PURPOSES, THIS STANDARD TAKES PRECEDENCE OVER PROCUREMENT DOCUMENTS REFERENCED HEREIN.

INACTIVE FOR DESIGN AFTER 30 NOV 1970, ~~NO SUPERSEDING STANDARD~~ (K) USE MS27407.

| | | |
|--|---|------------------------------|
| P.A. NAVY-AS Other Cust AF 85 ARMY-ER | TITLE SWITCH, TOGGLE, TWO POLE, SEALED TOGGLE | MILITARY STANDARD MS25201 |
| PROCUREMENT SPECIFICATION MIL-S-83731 | SUPERSEDES: | SHEET 1 OF 1 |