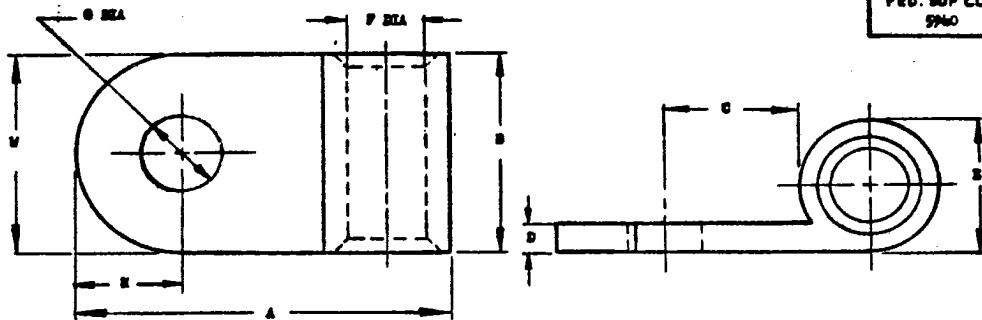


A-37-07

FED. SUP CLASS  
5940

| DASH NO. | CABLE SIZE | STUD SIZE | A MAX | B MIN | C MIN | D    |      | E    |      | F    |      | G    |      | H MAX | I    |       |
|----------|------------|-----------|-------|-------|-------|------|------|------|------|------|------|------|------|-------|------|-------|
|          |            |           |       |       |       | MIN  | MAX  | MIN  | MAX  | MIN  | MAX  | MIN  | MAX  |       | MIN  | MAX   |
| 101      | 8          | 10        | 1.064 | .367  | .250  | .059 | .069 | .300 | .330 | .176 | .197 | .168 | .178 | .258  | .484 | .516  |
| 102      |            | 1/4       |       |       | .330  |      |      |      |      |      |      | .193 | .203 |       |      |       |
| 103      |            | 5/16      |       |       | .398  |      |      |      |      |      |      | .265 | .285 |       |      |       |
| 104      |            | 3/8       | 1.125 |       | .453  |      |      |      |      |      |      | .320 | .343 |       |      |       |
| 105      |            | 1/2       | 1.390 |       | .530  |      |      |      |      |      |      | .385 | .410 |       |      |       |
| 106      |            | 3/4       | 1.562 |       | .600  |      |      |      |      |      |      | .443 | .473 |       |      |       |
| 107      | 6          | 10        | 1.118 | .470  | .290  | .059 | .069 | .344 | .377 | .222 | .244 | .193 | .203 | .281  | .484 | .516  |
| 108      |            | 1/4       |       |       | .330  |      |      |      |      |      |      | .260 | .285 |       |      |       |
| 109      |            | 5/16      | 1.187 |       | .398  |      |      |      |      |      |      | .320 | .343 |       |      |       |
| 110      |            | 3/8       | 1.432 |       | .530  |      |      |      |      |      |      | .385 | .410 |       |      |       |
| 111      |            | 1/2       | 1.653 |       | .600  |      |      |      |      |      |      | .443 | .473 |       |      |       |
| 112      |            | 3/4       | 1.875 |       | .670  |      |      |      |      |      |      | .500 | .535 |       |      |       |
| 113      | 4          | 10        | 1.290 | .470  | .300  | .069 | .084 | .433 | .471 | .281 | .303 | .193 | .203 | .328  | .531 | .585  |
| 114      |            | 1/4       |       |       | .330  |      |      |      |      |      |      | .260 | .285 |       |      |       |
| 115      |            | 5/16      | 1.290 |       | .398  |      |      |      |      |      |      | .320 | .343 |       |      |       |
| 116      |            | 3/8       | 1.562 |       | .530  |      |      |      |      |      |      | .385 | .410 |       |      |       |
| 117      |            | 1/2       | 1.781 |       | .600  |      |      |      |      |      |      | .443 | .473 |       |      |       |
| 118      |            | 3/4       | 2.000 |       | .670  |      |      |      |      |      |      | .500 | .535 |       |      |       |
| 119      | 2          | 10        | 1.389 | .600  | .300  | .069 | .084 | .511 | .545 | .355 | .377 | .193 | .203 | .360  | .609 | .650  |
| 120      |            | 1/4       |       |       | .330  |      |      |      |      |      |      | .260 | .285 |       |      |       |
| 121      |            | 5/16      | 1.389 |       | .398  |      |      |      |      |      |      | .320 | .343 |       |      |       |
| 122      |            | 3/8       | 1.639 |       | .530  |      |      |      |      |      |      | .385 | .410 |       |      |       |
| 123      |            | 1/2       | 1.859 |       | .600  |      |      |      |      |      |      | .443 | .473 |       |      |       |
| 124      |            | 3/4       | 2.079 |       | .670  |      |      |      |      |      |      | .500 | .535 |       |      |       |
| 125      | 1          | 10        | 1.438 | .665  | .360  | .080 | .100 | .566 | .600 | .390 | .412 | .260 | .285 | .333  | .609 | .650  |
| 126      |            | 1/4       |       |       | .398  |      |      |      |      |      |      | .320 | .343 |       |      |       |
| 127      |            | 5/16      | 1.463 |       | .445  |      |      |      |      |      |      | .385 | .410 |       |      |       |
| 128      |            | 3/8       | 1.639 |       | .530  |      |      |      |      |      |      | .443 | .473 |       |      |       |
| 129      |            | 1/2       | 1.859 |       | .600  |      |      |      |      |      |      | .500 | .535 |       |      |       |
| 130      |            | 3/4       | 2.079 |       | .670  |      |      |      |      |      |      | .560 | .595 |       |      |       |
| 131      | 0          | 10        | 1.733 | .780  | .408  | .113 | .128 | .746 | .780 | .502 | .524 | .260 | .285 | .471  | .792 | .835  |
| 132      |            | 1/4       |       |       | .445  |      |      |      |      |      |      | .320 | .343 |       |      |       |
| 133      |            | 5/16      | 1.844 |       | .530  |      |      |      |      |      |      | .385 | .410 |       |      |       |
| 134      |            | 3/8       | 2.064 |       | .600  |      |      |      |      |      |      | .443 | .473 |       |      |       |
| 135      |            | 1/2       | 2.284 |       | .670  |      |      |      |      |      |      | .500 | .535 |       |      |       |
| 136      |            | 3/4       | 2.504 |       | .740  |      |      |      |      |      |      | .560 | .595 |       |      |       |
| 137      | 00         | 10        | 1.844 | .780  | .408  | .113 | .128 | .746 | .780 | .502 | .524 | .260 | .285 | .471  | .792 | .835  |
| 138      |            | 1/4       |       |       | .445  |      |      |      |      |      |      | .320 | .343 |       |      |       |
| 139      |            | 5/16      | 1.844 |       | .530  |      |      |      |      |      |      | .385 | .410 |       |      |       |
| 140      |            | 3/8       | 2.064 |       | .600  |      |      |      |      |      |      | .443 | .473 |       |      |       |
| 141      |            | 1/2       | 2.284 |       | .670  |      |      |      |      |      |      | .500 | .535 |       |      |       |
| 142      |            | 3/4       | 2.504 |       | .740  |      |      |      |      |      |      | .560 | .595 |       |      |       |
| 143      | 000        | 10        | 2.000 | .805  | .455  | .113 | .128 | .800 | .834 | .557 | .579 | .260 | .285 | .536  | .800 | .825  |
| 144      |            | 1/4       |       |       | .495  |      |      |      |      |      |      | .320 | .343 |       |      |       |
| 145      |            | 5/16      | 2.000 |       | .539  |      |      |      |      |      |      | .385 | .410 |       |      |       |
| 146      |            | 3/8       | 2.220 |       | .600  |      |      |      |      |      |      | .443 | .473 |       |      |       |
| 147      |            | 1/2       | 2.440 |       | .670  |      |      |      |      |      |      | .500 | .535 |       |      |       |
| 148      |            | 3/4       | 2.660 |       | .740  |      |      |      |      |      |      | .560 | .595 |       |      |       |
| 149      | 0000       | 10        | 2.127 | .904  | .455  | .116 | .131 | .866 | .906 | .622 | .644 | .260 | .285 | .568  | .904 | 1.135 |
| 150      |            | 1/4       |       |       | .495  |      |      |      |      |      |      | .320 | .343 |       |      |       |
| 151      |            | 5/16      | 2.127 |       | .539  |      |      |      |      |      |      | .385 | .410 |       |      |       |
| 152      |            | 3/8       | 2.347 |       | .600  |      |      |      |      |      |      | .443 | .473 |       |      |       |
| 153      |            | 1/2       | 2.567 |       | .670  |      |      |      |      |      |      | .500 | .535 |       |      |       |
| 154      |            | 3/4       | 2.787 |       | .740  |      |      |      |      |      |      | .560 | .595 |       |      |       |
| 155      | 00000      | 10        | 2.327 | .904  | .455  | .116 | .131 | .866 | .906 | .622 | .644 | .260 | .285 | .568  | .904 | 1.135 |
| 156      |            | 1/4       |       |       | .495  |      |      |      |      |      |      | .320 | .343 |       |      |       |
| 157      |            | 5/16      | 2.327 |       | .539  |      |      |      |      |      |      | .385 | .410 |       |      |       |
| 158      |            | 3/8       | 2.547 |       | .600  |      |      |      |      |      |      | .443 | .473 |       |      |       |
| 159      |            | 1/2       | 2.767 |       | .670  |      |      |      |      |      |      | .500 | .535 |       |      |       |
| 160      |            | 3/4       | 2.987 |       | .740  |      |      |      |      |      |      | .560 | .595 |       |      |       |

FOR DESIGN FEATURE PURPOSES, THIS STANDARD TAKES PRECEDENCE OVER PROCUREMENT DOCUMENTS REFERENCED HEREIN.

REFERENCED DOCUMENTS SHALL BE OF THE ISSUE IN EFFECT ON DATE OF INVITATIONS FOR BID.

C DEPT. STANDARD REVISED.

C FOR CHANGES SEE SHEETS 1 AND 2.

P.A. Navy & AS  
Other Cost  
MS25189 - 22

TITLE

TERMINAL, LOG, FLAG TYPE,  
CRIMP STYLE, COPPER, CLASS I

MILITARY STANDARD

FED. SUP CLASS  
5940

## NOTES:

B DIMENSION SHALL NOT EXCEED W DIMENSION.

H DIMENSION SHALL NOT BE LESS THAN ONE HALF W MINIMUM DIMENSION.

CHAMFER BOTH ENDS OF BARREL.

CONTOUR OPTIONAL WITHIN DIMENSIONS NOTED.

FINISH: TINNED PLATE.

DIMENSIONS IN INCHES.

THE SEAM OF THE BARREL SHALL BE PERMANENTLY SEALED AND SHALL NOT OPEN AS A RESULT OF THE CRIMPING OPERATION.

MATERIAL: COPPER QQ-C-576 OR QQ-C-502.

MIL-W-5086 WIRE SHALL BE USED FOR ALL QUALIFICATION TESTING WITH AN3427 CRIMPING TOOL.

MS25189-1 THRU -47 PART NUMBERS COVERED BY REVISION "B" DATED 21 SEPTEMBER 1962 ARE CANCELLED AFTER 28 FEBRUARY 1969.

## INTERCHANGEABILITY RELATIONSHIP:

PART NUMBERS MS25189-101 THRU -147 CAN REPLACE MS25189-1 THRU -47 PARTS RESPECTIVELY.

THE CANCELLED MS25189-1 THRU -47 PARTS CANNOT ALWAYS REPLACE THE MS25189-101 THRU -147 PARTS. THE CANCELLED PARTS MAY BE USED UNTIL 28 FEBRUARY 1969 OR UNTIL A NEW QPL IS ESTABLISHED FOR MIL-T-7923F WHICHEVER COMES LATER.

Review activities:

His military standard is approved by the Department of the Air Force and the Naval Air Systems Command and is mandatory for use by those activities. All other military activities are required to employ his standard where suitable.

APPROVED 24 Sep 56 REVISED (C) FOR CHANGES SEE SHEETS 1 AND 2.

|   |   |  |
|---|---|--|
| P.A. Navy - AS<br>Other Cust<br>USAF - 11   | TITLE<br>TERMINAL, LUG, FLAG TYPE<br>CRIMP STYLE, COPPER, CLASS I | MILITARY STANDARD<br><b>MS25189(ASG)</b> |
| PROCUREMENT SPECIFICATION<br>MIL - T - 7923 | SUPERSEDES:   | SHEET 2                                  |