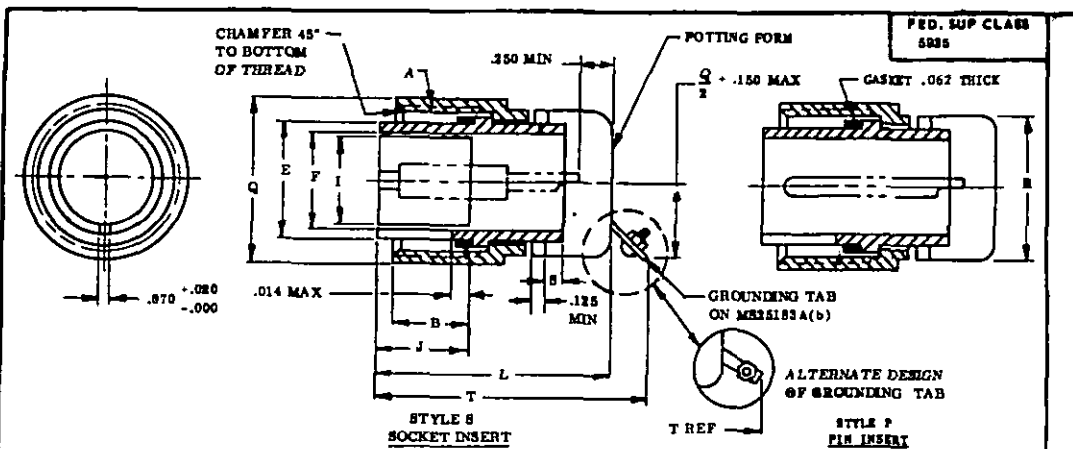


Review/user information is current as of the date of this document. For future coordination of changes to this document draft circulation should be based on the information in the current DOWNS.

Use Symbols:
 ARMY - AT, ME
 NAVY - OS, MC, CG
 USAF -

Review Symbols:
 AV
 MI
 SF
 EC
 NAVY - SF, EC
 USAF -

This military standard is approved by the Department of Defense and is mandatory for use by all Departments & Agencies of the Department of Defense. Selection for all new engineering and design applications and for replacement shall be made from this document.



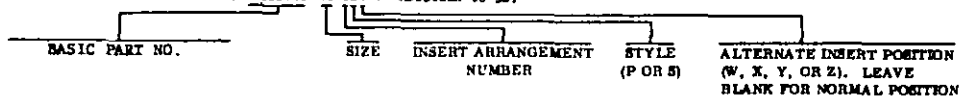
CLASS P - POTTING SEAL

| SIZE | A COUPLING THREAD | B +.000 -.002 EKT CPLG RING | E +.000 -.015 OD | F MIN ID | I MAX INSERT DIA | J LENGTH ENGAGE- MENT ±.003 | L (a) MAX | T (b) MAX OVERALL LENGTH | Q MAX OVERALL OD | R MAX | S (c) MIN | FOR INSERT ARRANGE- MENT SEE DRAWING |
|------|-------------------------|--|---------------------------|----------------|---------------------------|---|--------------|-----------------------------------|---------------------------|----------|--------------|---|
| 05 | 1/8-28 | | .385 | .238 | .250 | | | | .544 | .613 | | |
| 100 | 5/8-24 | .375 | .440 | .323 | .320 | .531 | 1.500 | 1.875 | .969 | .707 | .085 | MS33680 |
| 100L | | | .446 | | .440 | | | | | | | |
| 125 | 3/4-20 | | .585 | .450 | .445 | | | | 1.003 | .863 | | MS33681 |
| 125L | | .625 | | | | .719 | 1.906 | 2.281 | | | .141 | |
| 145 | 7/8-20 | .375 | .675 | .538 | .525 | .531 | 1.500 | 1.875 | 1.156 | .941 | .085 | MS33682 |
| 145L | | .625 | | | | .719 | 1.906 | 2.281 | | | .141 | |
| 165 | 1 -20 | .375 | .805 | .651 | .650 | .531 | 1.500 | 1.875 | 1.250 | 1.066 | .085 | MS33683 |
| 165L | | | | | | | 1.906 | 2.281 | | | .141 | |
| 18 | 1-1/8-18 | | .930 | .776 | .770 | | | | 1.344 | 1.207 | | MS33684 |
| 20 | 1-1/4-18 | .625 | 1.050 | .923 | .923 | .719 | | | 1.469 | 1.332 | | MS33685 |
| 22 | 1-3/8-18 | | 1.175 | 1.026 | 1.020 | | | | 1.594 | 1.457 | | MS33686 |
| 24 | 1-1/2-18 | | 1.300 | 1.161 | 1.145 | | | | 1.719 | 1.582 | | MS33687 |
| 28 | 1-3/4-18 | | 1.620 | 1.370 | 1.363 | | | | 1.844 | 1.632 | | MS33688 |
| 32 | 2 -18 | | 1.770 | 1.620 | 1.615 | | 2.188 | 2.594 | 2.219 | 2.092 | .236 | MS33689 |
| 36 | 2-1/4-18 | | 1.960 | 1.638 | 1.630 | | | | 2.469 | 2.393 | | MS33690 |
| 40 | 2-1/2-18 | | 2.230 | 2.057 | 2.045 | | | | 2.719 | 2.594 | | MS33691 |
| 44 | 2-3/4-18 | | 2.480 | 2.307 | 2.300 | | | | 2.969 | 2.875 | | MS33692 |
| 48 | 3 -18 | | 2.730 | 2.657 | 2.650 | | | | 3.219 | 3.125 | | MS33693 |

- (a) ADD .375 FOR SIZE "0" CONTACTS.
- (b) THE GROUNDING TAB MUST PROVIDE POSITIVE CONDUCTIVITY TO SHELL AND BE PROVIDED WITH A 6-32 SCREW AND NUT FOR EXTERNALLY GROUNDING PIGTAILS OF SHIELDED WIRE TO SHELL OF CONNECTOR.
- (c) THE SURFACE WITHIN THE "S" DIMENSION SHALL HAVE SURFACE IRREGULARITIES TO ASSIST THE GRIP OF THE POTTING COMPOUND TO THE SHELL.
- (d) CONNECTORS MS25183A ARE THE SAME AS MS25183 EXCEPT THAT A INCLUDES GROUNDING TAB.

C NOT APPLICABLE FOR NEW DESIGNED AIR FORCE AIRBORNE EQUIPMENT.

EXAMPLE OF PART NUMBER: MS25183-18-65Y OR MS25183A-18-55Y



DIMENSIONS IN INCHES, UNLESS OTHERWISE SPECIFIED, TOLERANCES: DECIMALS ± .016.
 FOR DESIGN FEATURE PURPOSES, THIS STANDARD TAKES PRECEDENCE OVER PROCUREMENT DOCUMENTS REFERENCED HEREIN.
 REFERENCED DOCUMENTS SHALL BE OF THE ISSUE IN EFFECT ON DATE OF INVITATIONS FOR BID.

(C) REVISED

| | | |
|---|---|-------------------------------------|
| P.A. NAVY - A 8 Other Case Army - EL USAF - 11 | TITLE CONNECTOR PLUG, ELECTRIC, POTTING SEAL, SOLDER CONTACT, AN TYPE | MILITARY STANDARD MS25183 |
| PROCUREMENT SPECIFICATION MIL-C-8015 | SUPERSEDES: 54A3A225, 54A3A224 | SHEET 1 OF 1 |

DD FORM 672-1 (Coordinated)

PREVIOUS EDITIONS OF THIS FORM ARE OBSOLETE.

PLATE NO. 1777D

(PROJECT NO. 5935-1703)

U. S. GOVERNMENT PRINTING OFFICE: 1971-716 108-2253

APPROVED 13 APR 54 REVISED 8 JUL 66 (B) 15 MAY 69 (C) 28 SEP 71