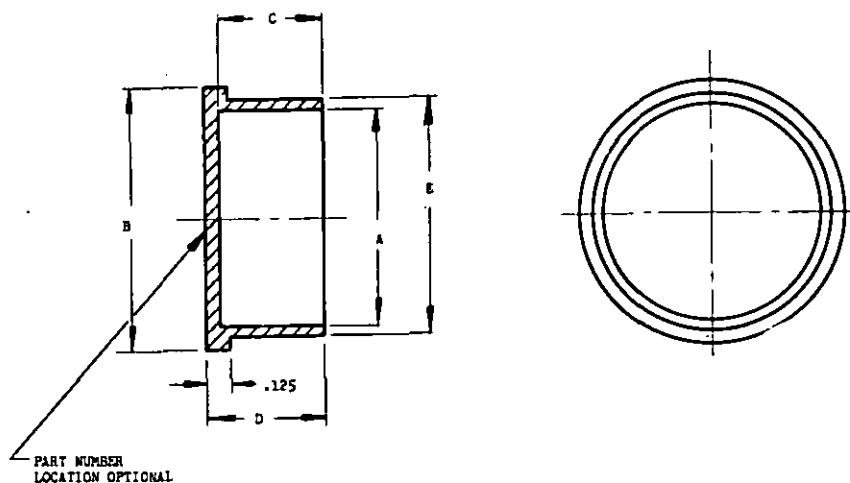


FED. SUP CLASS
5935

NOTICE—When Government drawings, specifications, or other data are used for any purpose other than in connection with a definitely related Government procurement operation the United States Government thereby incurs no responsibility, nor any obligation whatsoever; and the fact that the Government may have furnished, furnished, or in any way supplied the said drawings, specifications, or other data is not to be regarded by implication or otherwise as in any manner increasing the liability of any other person in connection with, or conveying any right or permission to manufacture, use, or sell any patented invention that may in any way be related thereto.



DASH NO.	SHELL SIZE	A -.010	B	C	D	E -.010
-8	8	.150	.750			.523
-10	10	.602	.875			.695
-12	12	.680	1.000	.500	.562	.805
-14	14	.853	1.125			.978
-16	16	.973	1.250			1.098
-18	18	1.293	1.318			1.218
-20	20	1.236	1.469			1.361
-22	22	1.312	1.594	.531	.593	1.467
-24	24	1.463	1.719			1.588
-26	26	1.715	2.000			1.810
-32	32	1.930	2.250			2.055
-36	36	2.210	2.469			2.335
-40	40	2.460	2.719	.594	.656	2.585
-44	44	2.710	2.969			2.835
-48	48	2.960	3.219			3.085

MATERIAL: POLYETHYLENE: MIL-P-3803, GRADE 1.
COLOR RED

DIMENSIONS IN INCHES. UNLESS OTHERWISE SPECIFIED, TOLERANCES: DECIMALS $\pm .031$.

EXAMPLE OF PART NUMBER: MS25178-18-DUST CAP FOR RECEPTACLE, SHELL SIZE 18.

THIS STANDARD TAKES PRECEDENCE OVER DOCUMENTS REFERENCED HEREIN.
REFERENCED DOCUMENTS SHALL BE OF THE ISSUE IN EFFECT ON DATE OF INVITATIONS FOR BID.

This military standard is approved by the Department of Defense and is mandatory on all activities. Selection for all engineering and design applications and for repetitive use shall be made from this document.

P.A. Navy - Wep Other Cust Army - SigC USAF - AFSC	TITLE CAP, PLASTIC, DUST, AN ELECTRIC CONNECTOR, RECEPTACLE	MILITARY STANDARD MS25178
PROCUREMENT SPECIFICATION NORC	SUPERSEDES:	SHEET 1 OF 1

DD FORM 672-1 (Coordinated)

PREVIOUS EDITIONS OF THIS FORM ARE OBSOLETE.