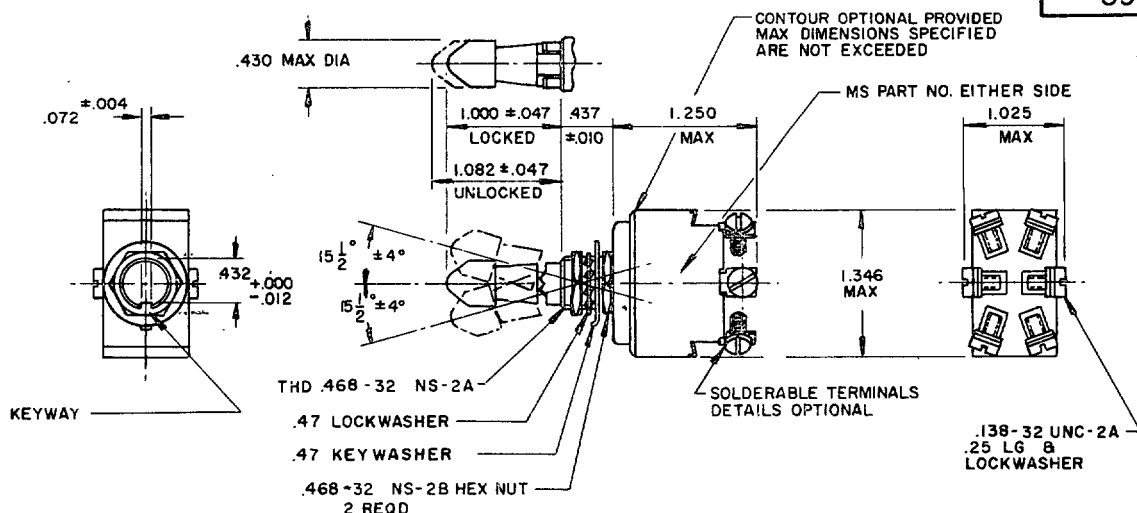


FED. SUP CLASS
5930

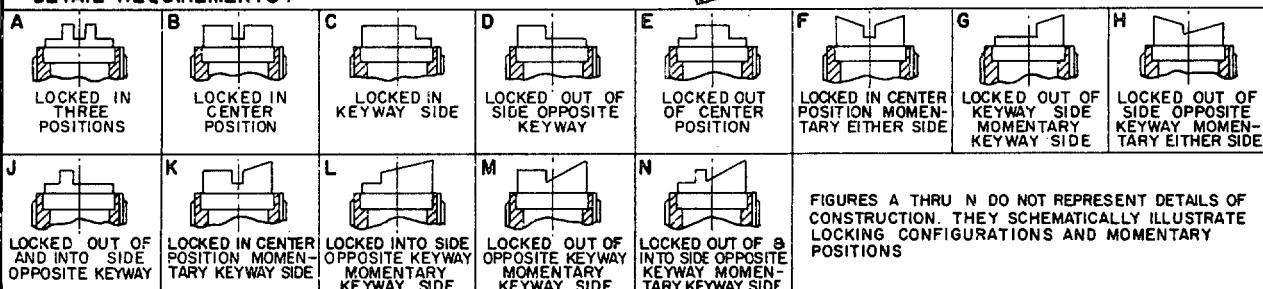
Reviewer : AF 11 AV, AS, ES



1. FOR HARDWARE AND TERMINAL SCREW DETAIL SPECIFICATIONS SEE SUPPLEMENT OF MIL-S-83731
2. ALL DIMENSIONS ARE IN INCHES.
3. UNLESS OTHERWISE SPECIFIED, TOLERANCE IS $\pm .020$ ON TWO PLACE DECIMALS AND $\pm .005$ ON THREE PLACE DECIMALS.
4. LOCKING MEANS OPTIONAL.

DETAIL REQUIREMENTS:

KEYING SIDE →



MS PART NO.	LOCKING COMBINATION	CIRCUIT WITH TOGGLE LEVER IN			CURRENT CAPACITY (AMPERES PER POLE)					
		OPPOSITE KEYING SIDE	CENTER	KEYING SIDE	28 VDC			115 VAC 400 HERTZ		
					LAMP-LOAD CIRCUIT	RESISTIVE CIRCUIT	INDUCTIVE CIRCUIT	LAMP-LOAD CIRCUIT	RESISTIVE CIRCUIT	INDUCTIVE CIRCUIT
MS25126 - 1	A, B, C, D, E	ON	OFF	ON	7	20	15	4	20	15
- 2	C, E		NONE	OFF						
- 3				ON						
- 4	B, J		OFF	NONE						
- 5	L		MOM-OFF							
- 6		MOM-ON	NONE		5	18	10	2	11	8
- 7	F, H		OFF	MOM-ON						
- 8	K									
- 9			ON	MOM-OFF						
- 10	L		NONE							
- 11	G, K, M, N	ON	OFF	MOM-ON	5	18	10	2	11	8

EXAMPLE OF PART NO. MS25126-81 - ON OFF ON, TOGGLE SEAL, LOCKED IN CENTER OFF POSITION.

1. ALL SWITCHES ON THIS STANDARD ARE DESIGNED SO THAT THE MOVEMENT OF THE SWITCH MECHANISM IS OPPOSITE TO THAT OF THE TOGGLE LEVER.
2. MAXIMUM WEIGHT IS .15 POUND
3. LOCKING ARRANGEMENT: POSITIVE LOCKING SHALL BE ACCOMPLISHED AND SHALL PREVENT MOTION OF THE TOGGLE LEVER UNTIL THE LOCKING MECHANISM IS MANUALLY RELEASED.
4. THE FORCE REQUIRED TO RELEASE THE LOCKING MECHANISM SHALL BE 3 TO 5 POUNDS.
5. ENDURANCE: ELECTRICAL 10,000 CYCLES
MECHANICAL 20,000 CYCLES

REFERENCED DOCUMENTS SHALL BE OF THE ISSUE IN EFFECT ON THE DATE OF INVITATION FOR BID.
FOR DESIGN FEATURE PURPOSES, THIS STANDARD TAKES PRECEDENCE OVER PROCUREMENT DOCUMENTS REFERENCED HEREIN.

(K) INACTIVE FOR DESIGN AFTER 16 SEP 1969
USE MS 24659 OR MS 24613

P.A AF 85 Other Cust ARMY - ER NAVY - EC	TITLE SWITCH, TOGGLE, TWO POLE SEALED TOGGLE, LEVER LOCK	MILITARY STANDARD MS25126
PROCUREMENT SPECIFICATION MIL-S-83731	SUPERSEDES:	SHEET 1 OF 2

Reviewer :- AF 11, AV, AS, ES

FED. SUP CLASS
5930

SUPERSEDING NO.	SUPERSEDED NO.
MS25126-A1	MS25126 - 1
MS25126-B1	MS25126 - 2
MS25126-C1	MS25126 - 3
MS25126-D1	MS25126 - 5
MS25126-E1	MS25126 - 7
MS25126-C3	MS25126 - 4
MS25126-E3	MS25126 - 8
MS25126-J4	MS25126 - 9
MS25126-M11	MS25126 - 6

THE SUPERSEDING DASH NUMBERS SUPERSEDE AND ARE INTERCHANGEABLE WITH
THE SUPERSEDED DASH NUMBERS.

☆ U.S. GOVERNMENT PRINTING OFFICE: 1980 - 703-023/203

APPROVED 15 DEC 1955 REVISED (E) See sheet 2 (F) See sheet 1 (G) See sheets 1 & 2 (H) See sheet 1 (K) See sheet 1

P.A. AF 85 Other Cust ARMY - ER NAVY - EC	TITLE SWITCH, TOGGLE, TWO POLE SEALED TOGGLE, LEVER LOCK	MILITARY STANDARD
		MS25126
PROCUREMENT SPECIFICATION MIL-S-83731	SUPERSEDES:	SHEET 2