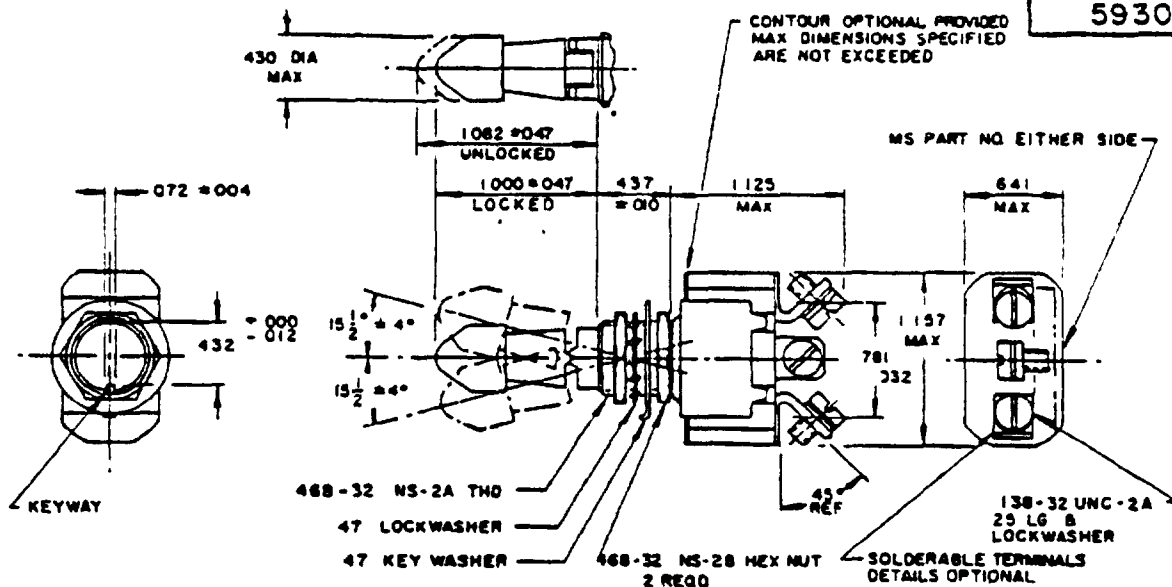
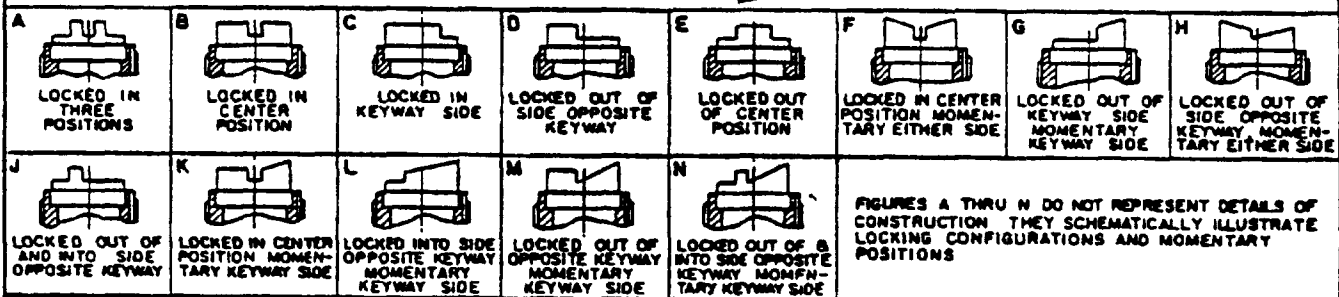


FED. SUP CLASS
5930

1. FOR HARDWARE AND TERMINAL SCREW DETAIL SPECIFICATIONS SEE SUPPLEMENT OF MIL-S-83731
2. ALL DIMENSIONS ARE IN INCHES
3. UNLESS OTHERWISE SPECIFIED, TOLERANCE IS $\pm .020$ ON TWO PLACE DECIMALS AND $\pm .005$ ON THREE PLACE DECIMALS.
4. LOCKING MEANS OPTIONAL.

DETAIL REQUIREMENTS:

KEYING SIDE →



MS PART NO	LOCKING COMBINATION	CIRCUIT WITH TOGGLE LEVER IN			CURRENT CAPACITY (AMPERES)					
		OPPOSITE KEYING SIDE	CENTER	KEYING SIDE	28 VDC			115 VAC 400 HERTZ		
					LAMP-LOAD CIRCUIT	RESISTIVE CIRCUIT	INDUCTIVE CIRCUIT	LAMP-LOAD CIRCUIT	RESISTIVE CIRCUIT	INDUCTIVE CIRCUIT
MS25125 - 1	A, B, C, D, E	ON	OFF	ON	3	20	15	3	10	10
- 2	C, E		NONE	OFF						
- 3	B, J		OFF	ON						
- 4	B, J		OFF	NONE						
- 5	L		MOM-OFF	NONE						
- 6	L		NONE	NONE						
- 7	F, H	MOM-ON	OFF	MOM-ON	4	15	10	2	10	7
- 8	K	NONE	OFF	MOM-OFF	5	20	15	3	10	10
- 9	L	ON	NONE	MOM-OFF	5	20	15	3	10	10
- 10	L	OFF	NONE	MOM-OFF	5	20	15	3	10	10
- 11	G, K, M, N	ON	OFF	MOM-ON	4	15	10	2	10	7

EXAMPLE OF PART NO MS25125-01 - ON OFF ON, TOGGLE SEALED, LOCKED IN CENTER OFF POSITION.

1. ALL SWITCHES ON THIS STANDARD ARE DESIGNED SO THAT THE MOVEMENT OF THE SWITCH MECHANISM IS OPPOSITE TO THAT OF THE TOGGLE LEVER.
2. MAXIMUM WEIGHT IS 10 LB
3. LOCKING ARRANGEMENT POSITIVE LOCKING SHALL BE ACCOMPLISHED AND SHALL PREVENT MOTION OF THE TOGGLE LEVER UNTIL THE LOCKING MECHANISM IS MANUALLY RELEASED
4. THE FORCE REQUIRED TO RELEASE THE LOCKING MECHANISM SHALL BE 3 TO 5 POUNDS
5. ENDURANCE ELECTRICAL 10,000 CYCLES
MECHANICAL 20,000 CYCLES

REFERENCED DOCUMENTS SHALL BE OF THE ISSUE IN EFFECT ON THE DATE OF INVITATION FOR BID.
FOR DESIGN FEATURE PURPOSES, THIS STANDARD TAKES PRECEDENCE OVER PROCUREMENT DOCUMENTS REFERENCED HEREIN.

(K) INACTIVE FOR DESIGN AFTER 16 SEP 1969
USE MS24658 OR MS24612

PA AF 85	TITLE	MILITARY STANDARD
Other Case	SWITCH, TOGGLE, ONE POLE, SEALED TOGGLE, LEVER LOCK	MS25125
ARMY - ER NAVY - EC		
PROCUREMENT SPECIFICATION MIL-S-83731	SUPERSEDES	SHEET 1 OF 2

FED. SUP CLASS
5930

Reviewer :- AF II , AV , AS , ES

SUPERSEDING NO	SUPERSEDED NO
MS25125 - A1	MS25125 - 1
MS25125 - B1	MS25125 - 2
MS25125 - C1	MS25125 - 3
MS25125 - D1	MS25125 - 5
MS25125 - E1	MS25125 - 7
MS25125 - C3	MS25125 - 4
MS25125 - E3	MS25125 - 8
MS25125 - J4	MS25125 - 9
MS25125 - M11	MS25125 - 6

THE SUPERSEDING DASH NUMBERS SUPERSEDE AND ARE INTERCHANGEABLE WITH
THE SUPERSEDED DASH NUMBERS

APPROVED 25 NOV 1955 REVISED (E) See sheet 2 (F) See sheet 1 (G) See sheets 1 & 2 (H) See sheet (K) See sheet 1

THIS DOCUMENT IS UNCLASSIFIED EXCEPT WHERE SHOWN OTHERWISE AND IS
EXEMPT FROM AUTOMATIC DOWNGRADING AND DECLASSIFICATION. Selection for all new engineering and design
applications and for repetitive use shall be made from this document.

P.A. AF 85 Other Code ARMY - ER NAVY - EC	TITLE SWITCH, TOGGLE, ONE POLE, SEALED TOGGLE, LEVER LOCK	MILITARY STANDARD MS25125
PROCUREMENT SPECIFICATION MIL-S-83731	SUPERSEDES	SHEET 2