

INCH-POUND

MS25100K

17 March 2004

SUPERSEDING

MS25100J

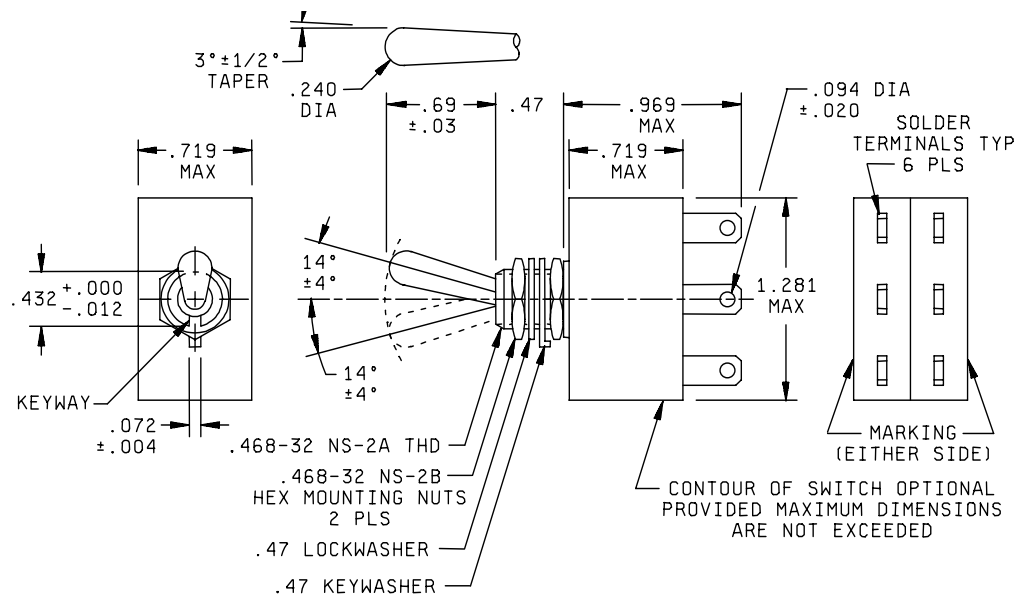
26 June 1995

MILITARY SPECIFICATION SHEET**SWITCH, TOGGLE, TWO POLE, SEALED TOGGLE**

This specification is approved for use by all Departments and Agencies of the Department of Defense.

The requirements for acquiring the switch described herein shall consist of this specification sheet and MIL-DTL-83731.

MS25100K, dated 17 March 2004, is hereby reactivated and may be used for either new or existing design acquisition.



Inches	mm	Inches	mm	Inches	mm	Inches	mm	Inches	mm
.004	0.10	.03	0.8	.240	6.10	.47	11.9	.969	24.61
.012	0.30	.072	1.83	.432	10.97	.69	17.5	1.281	32.54
.020	0.51	.094	2.39	.468	11.89	.719	18.26		

NOTES:

1. Dimensions are in inches.
2. Metric equivalents are given for information only.
3. Unless otherwise specified, tolerances are ± 0.020 (0.51 mm) on two place decimals and ± 0.005 (0.13 mm) on three place decimals.
4. For hardware detail specifications, see appendix of MIL-DTL-83731.
5. Dome on top of the mounting bushing is permissible, not to exceed .09 (2.3 mm).

FIGURE 1. Dimensions and configuration.

MS251000K

Design and construction: See figure 1.

Switching characteristics: See table I. Direction of the movement of the switch mechanism is the same as that of the toggle lever.

Weight: .9 ounce maximum.

Dielectric withstanding voltage: Sea level only.

Toggle seal test: Applicable.

Electrical endurance: 10,000 cycles, at sea level only, with same polarity on adjacent poles.

Electrical ratings: See table II.

Mechanical endurances:

Maintained circuits: 20,000 cycles

Momentary circuits: 10,000 cycles.

Group B inspection: Not applicable.

Part or Identifying Number (PIN):

Example:

Dash number MS25100-22
(see table I)

PIN MS25100-22 identifies a switch with a circuit configuration of OFF in the down position (keying side), NONE in center position, and ON in the up position.

TABLE I. Switching characteristics.

MS part number MS25100-	Circuit with toggle lever in			Former MS part number	Former JAN type designation
	Down position keying side	Center position	Up position		
22	Off	None	On	MS25100-1	ST22K
23	On	None	On	MS25100-4	ST22M
26	Mom On	None	On	None	ST12R
29	Mom Off	None	On	MS25100-2	ST12L
30	Mom On	None	Off	MS25100-3	ST12M

MS251000K

TABLE II. Electrical ratings.

MS part number MS25100	Current capacity (Amperes per pole, nominal ratings)			
	Direct current		Alternating current (60 hertz)	
	Resistive circuit	Inductive circuit	Resistive circuit	Inductive circuit
	125 V	125 V	115 V	115 V
22	3.0	1.5	3.0	1.5
23	1.0	1.0	1.0	1.0
26	1.0	1.0	1.0	1.0
29	3.0	1.5	3.0	1.5
30	3.0	1.5	3.0	1.5

Referenced documents:

MIL-DTL-83731

Custodians:

Air Force - 11

Navy - AS

Army - CR

DLA - CC

Preparing activity:

DLA - CC

(Project 5930-1798)

Review activities:

Navy - EC

Air Force - 99

Army - AV

NOTE: The activities listed above were interested in this document as of the date of this document. Since organizations and responsibilities can change, you should verify the currency of the information above using the ASSIST Online database at www.dodssp.daps.mil.