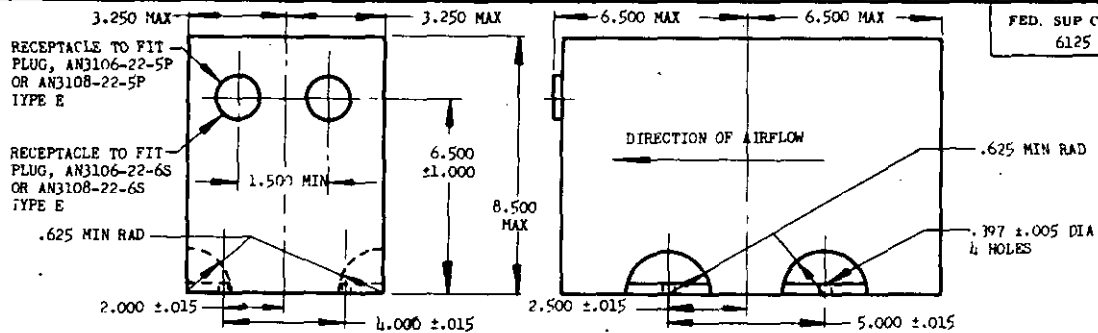
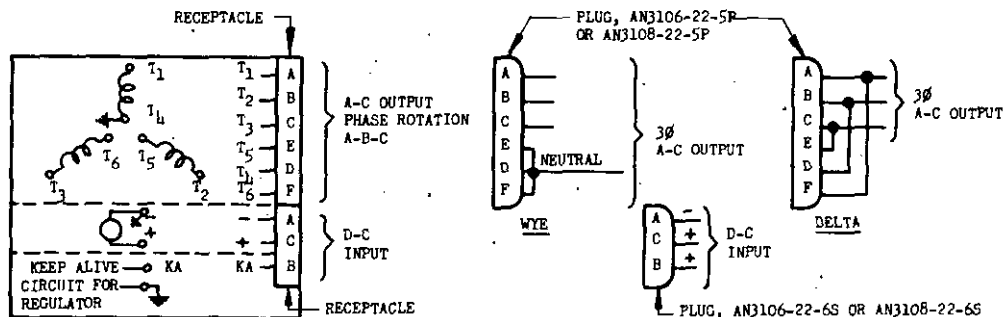


NOTICE: When Government drawings, specifications, or other data are used for any purpose other than in connection with a definitely related Government procurement operation, the United States Government thereby incurs no responsibility, nor any obligation whatsoever; and the fact that the Government may have furnished, furnished, or in any way supplied the said drawings, specifications, or other data is not to be regarded by implication or otherwise as in any manner licensing the holder or any other person or corporation, or conveying any rights or permission to manufacture, use, or sell any patented invention that may in any way be related thereto.



FED. SUP CLASS.
6125



CONNECTIONS EXTERNAL TO THE INVERTER NECESSARY FOR WYE (115/200 VOLT) AND DELTA (115 VOLT) CONNECTIONS. FOR 1Ø CONNECTION, SEE (b)

MS PART NO.
MS25094-1

	3Ø	1Ø
INPUT: VOLTS, DC	28	28
OUTPUT: VOLTS, AC	115/200	115
FREQUENCY, CPS	400	400
VA TO 50,000 FEET ALTITUDE	500	500
VA TO 65,000 FEET ALTITUDE	250	250
PF MIN LAG, PERCENT	80	80
PF MIN LEAD, PERCENT	95	95
MIN OUTPUT VOLTAGE AT 200 PERCENT RATED CURRENT	50/85	50
MIN EFFICIENCY, PERCENT, AT FULL LOAD, UNITY PF, 28-VOLT INPUT, SEA LEVEL, AND 25° ±15°C.	35	30
MAX WEIGHT, POUNDS	28	28

FOR ANY COMBINATION OF CONDITIONS LISTED BELOW, THE OUTPUT VOLTAGE AND FREQUENCY SHALL REMAIN WITHIN THE INDICATED LIMITS.

CONDITIONS	LIMITS	
	VOLTAGE	FREQUENCY, CPS
INPUT VOLTAGE VARIED BETWEEN 26 AND 29 VOLTS	LOW 112.5/195 HIGH 117.5/203.5	LOW 390 HIGH 410
LOAD VARIED FROM 0 TO FULL LOAD		
AMBIENT TEMPERATURE-ALTITUDE VARIED WITHIN THE RANGE ESTABLISHED BY CURVE I OF MS33513, EXCEPT THAT THE AMBIENT TEMPERATURE FOR THIS UNIT SHALL NEVER EXCEED 85°C. THE UNIT SHALL DELIVER RATED POWER TO 50,000 FEET AND 50 PERCENT MIN RATED POWER TO 65,000 FEET.		
LOAD POWER FACTOR VARIED FROM .80 LAG TO .95 LEAD.		
UNIT MOUNTED BASE DOWN.		
ALL VARIATIONS ABOVE, EXCEPT WITH THE INPUT VOLTAGE VARIED BETWEEN 20 AND 26 VOLTS	LOW 100 (a) HIGH 120 (a)	LOW 350 (a) HIGH 410 (a)

(a) FOR THIS CONDITION, THE FREQUENCY/VOLTAGE RATIO SHALL REMAIN WITHIN 3.0 AND 4.0.

(b) THIS INVERTER DESIGN SHALL BE SUCH THAT IT MAY BE LOADED EITHER 3Ø OR 1Ø BUT NOT SIMULTANEOUSLY. WHEN USED AS A SINGLE-PHASE INVERTER, THE UNIT SHALL BE CONNECTED IN DELTA AND THE LOAD CONNECTED TO THE TERMINALS A(T₁) AND B(T₂). WHEN USED 3Ø, THE LOADS PER PHASE SHALL NOT DIFFER BY MORE THAN 20 PERCENT OF THE INVERTER RATING.

DIMENSIONS IN INCHES.

THE AIRCRAFT MANUFACTURER SHALL ALLOW CLEARANCE FOR THE MAXIMUM DIMENSIONS SHOWN ON THIS DRAWING FOR INSTALLATION.

THE WEIGHT AND DIMENSIONS SHOWN ON THIS DRAWING SHALL INCLUDE THE WEIGHT AND DIMENSIONS OF ALL AUXILIARY APPARATUS NECESSARY TO MAKE THIS PRODUCT CONFORM TO THE PROCUREMENT SPECIFICATION.

THE MS DESIGNATION SHALL NOT BE SHOWN ON INVERTERS UNTIL APPROVAL HAS BEEN RECEIVED FROM THE AERONAUTICAL STANDARDS GROUP AND THE INVERTER FULLY MEETS THE REQUIREMENTS OF THE SPECIFICATION AND DRAWING.

A VOLTAGE ADJUSTMENT MEANS SHALL BE ON THE CONNECTOR END AND ABOVE THE HORIZONTAL CENTERLINE OF THE INVERTER.

PERMISSION OF THE PROCURING ACTIVITY SHALL BE OBTAINED FOR AN APPLICATION OF THIS UNIT AT ALTITUDES ABOVE 65,000 FEET.

TWO PLACARDED PIN JACKS SHALL BE PROVIDED ON THE CONNECTOR END AND ABOVE THE HORIZONTAL CENTERLINE OF THE UNIT BETWEEN WHICH THE VOLTAGE BETWEEN A(T₁) AND D(T₁) CAN BE MEASURED. THESE PIN JACKS SHALL ACCEPT A P-000 PIN .078 ±.002 INCHES IN DIAMETER.

THIS STANDARD TAKES PRECEDENCE OVER DOCUMENTS REFERENCED HEREIN.

REFERENCED DOCUMENTS SHALL BE OF THE ISSUE IN EFFECT ON DATE OF INVITATIONS FOR BID.

CANCELED AFTER 10 FEBRUARY 1965. USE MS17406. INTERCHANGEABILITY RELATIONSHIP: MS17406-1 CANNOT ALWAYS REPLACE MS25094-1. MS25094-1 CANNOT REPLACE MS17406-1.

CUSTODIANS Navy - WP USAF - 82 B	OTHER INT. A - N - AF -	MILITARY STANDARD	MS25094 (ASG)
		INVERTER, 500 VA, 3/1 PHASE, CLASS B	
PROCUREMENT SPECIFICATION MIL-I-7032	SUPERSEDES:	SHEET 1 OF 1	

APPROVED 27 Oct 64
REVISED 10 Jan 56
① 10 FEB 1965