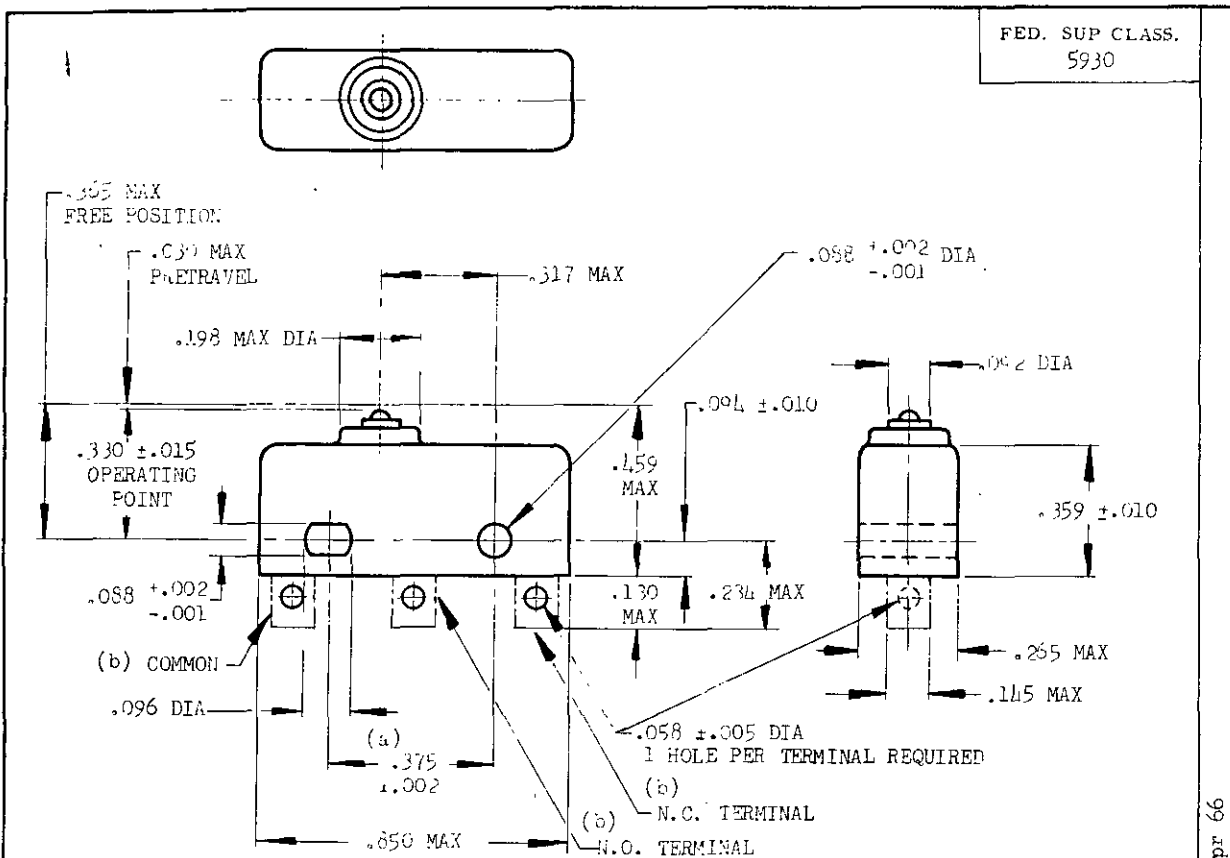


NOTICE: When Government drawings, specifications, or other data are used for any purpose other than in connection with a definitely related Government procurement operation, the United States Government thereby incurs no responsibility, nor any obligation whatsoever; and the fact that the Government may have formulated, furnished, or in any way supplied the said drawings, specifications, or other data is not to be regarded by implication or otherwise as in any manner licensing the holder or any other person or corporation, or conveying any rights or permission to manufacture, use, or sell any patented invention that may in any way be related thereto.



DETAIL REQUIREMENTS

- | | |
|---|--------------------------|
| (A) CONTACT ARRANGEMENT | SINGLE POLE DOUBLE THROW |
| (B) RATED LOAD: | |
| RESISTIVE (D-C 28 VOLTS) | 4 AMP |
| RESISTIVE (A-C 400-CYCLES, 115/200 VOLTS) | 5 AMP |
| INDUCTIVE (D-C 2 VOLTS) | 2.5 AMP |
| INDUCTIVE (A-C 400-CYCLES, 115/200 VOLTS) | 5 AMP |
| (C) MINIMUM OPERATING CYCLES | 25,000 |
| (D) ACTUATING FORCE | 5 OZ MAX |
| (E) RELEASE FORCE | 1 OZ MIN |
| (F) MOVEMENT DIFFERENTIAL | .004 INCH MAX |
| (G) PRETRAVEL | .030 INCH MAX |
| (H) OVERTRAVEL | .005 INCH MIN |
| (I) STRENGTH OF PLUNGER PIN AND PIN STOP | 25 LB |
| (J) STRENGTH OF TERMINALS | 20 LB |
| (K) MAXIMUM WEIGHT | .65 LB |

MS PART NO.	FIN
MS25085-1	

(a) MOUNTING HOLES WILL ACCEPT .075 MAXIMUM DIAMETER PINS OR SCREWS ON .375 ± .002 CENTERS.
 (b) TERMINAL CONTOUR AND FACING DIRECTION OPTIONAL WITHIN MAX DIMENSIONS SHOWN.
 TERMINALS ARE PLATED FOR SOLDERING.

DIMENSIONS IN INCHES. UNLESS OTHERWISE SPECIFIED, TOLERANCES: DECIMALS ± .005.

CANCELED AFTER 8 APRIL 1966. FOR PROCUREMENT USE MIL-3-8805/2.

CUSTODIANS Navy - BuAer Air Force	OTHER INT. A - N - AF -	MILITARY STANDARD	MS25085 (ASG)
		SWITCH, SENSITIVE, SUB-MINIATURE	
Procurement Specification MIL-S-6743		SUPERSEDES:	SHEET 1 OF 1