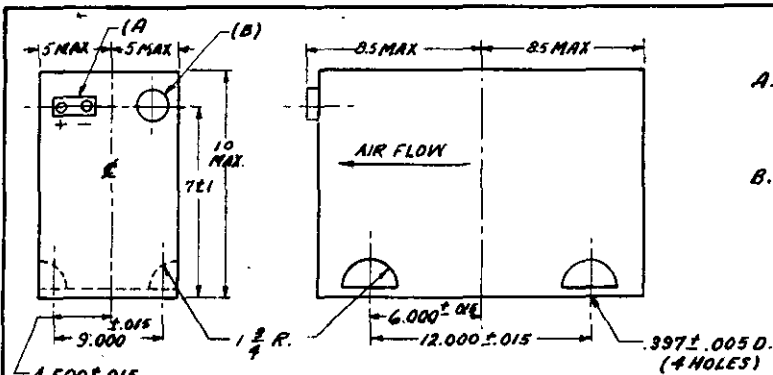
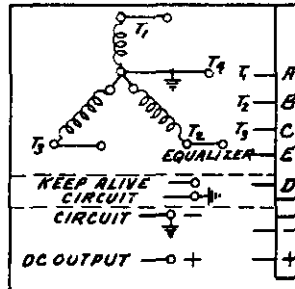


NOTICE: When Government drawings, specifications, or other data are used for any purpose other than in connection with a definitely related Government procurement operation, the United States Government thereby incurs no responsibility, nor any obligation whatsoever; and the fact that the Government may have furnished, furnished, or in any way supplied the said drawings, specifications, or other data is not to be regarded by implication or otherwise as in any manner licensing the holder or any other person or corporation, or conveying any rights or permission to manufacture, use, or sell any patented invention that may in any way be related thereto.

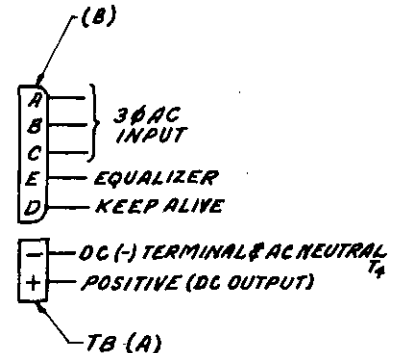


A. TERMINAL BOARD MS25044-1  
PLACARDED, SHOWING POSITIVE D.C.  
TERMINAL & D.C. GND. & AC NEUTRAL  
B. RECEPTACLE TO FIT PLUG AN3106 OR  
AN3108-24-23P.

INPUT:	
Voltage (Nominal)	115/200 volts
Frequency (Nominal)	400 Cps
Phase	3
OUTPUT:	
Voltage (Nominal)	28 Volts
Current	200 Amp.
EFFICIENCY: At sea level, 25 ± 15°C, full load (%)	75
WEIGHT: (lbs.)	38



INPUT PHASE ROTATION  $T_1, T_2, T_3$



For any combination of conditions listed below the output voltage shall remain within the indicated limits.

#### Conditions

Input voltage (line to neutral) varied between 10% and 117 volts, and input frequency varied 380-420.  
Load varied from 0 to full load.  
Ambient temperature - altitude varied within the range established by Curve I of MS 33543 (ASG) except that the ambient temperature for this unit shall never exceed 85°C. The unit shall deliver rated output to 50,000 ft. and 50% rated output to 65,000 ft.  
Mounted base down and maneuvered through any position.  
Warm-up effects.

#### Output Voltage Limits

Low 26.0  
High 28.5

#### NOTES:

1. A means of adjusting output voltage and equalizer current shall be provided on the connector end of the unit and above its horizontal center line.
2. The weight and volume limitations shown on this drawing shall include the weight and volume of all auxiliary apparatus necessary to make this unit conform to the procurement specification.
3. This drawing and the procurement specification complement one another, and together completely define the product.
4. The MS designation shall not be shown on converters until approval has been received from the Bureau of Aeronautics and the converter fully meets the requirements of the specification and drawing.
5. Permission of the procuring activity shall be obtained for application of this unit outside of the specified limits.

MS PART NO.	FIN
MS25073-1	

Ⓔ CANCELLED 19 MARCH 1963. NO SUPERSEDING STD.  
SEE MS28132

CUSTODIANS  NAVY, NAVER	OTHER INT. A - N - AF -	MILITARY STANDARD		MS25073  (Aer)
		CONVERTER, 200 AMPERE, AIRCRAFT		
		CLASS B		
PROCUREMENT SPECIFICATION MIL-C-7113 (Aer)		SUPERSEDES: Bureau of Aeronautics Drawing 511A144 & 511A145.		SHEET 1 OF 1