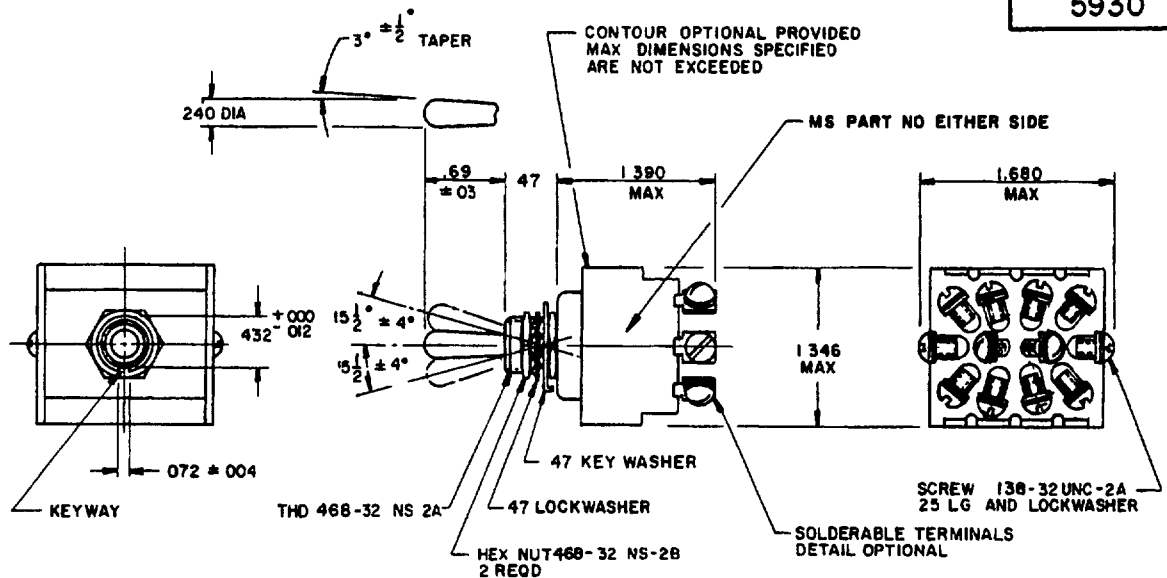


FED. SUP CLASS
5930

1. FOR HARDWARE AND TERMINAL SCREW DETAIL SPECIFICATIONS SEE SUPPLEMENT OF MIL-S-8373I
2. ALL DIMENSIONS ARE IN INCHES.
3. UNLESS OTHERWISE SPECIFIED, TOLERANCE IS $\pm .020$ ON TWO PLACE DECIMALS AND $\pm .005$ ON THREE PLACE DECIMALS

DETAIL REQUIREMENTS

| MS PART NO | FORMER MS PART NO | CIRCUIT WITH TOGGLE LEVER IN | | | CURRENT CAPACITY (AMPERES PER POLE) | | | | | |
|------------------|-------------------------|------------------------------|---------|----------------------------|-------------------------------------|----------------------|----------------------|---------------------------------|----------------------|----------------------|
| | | KEYING SIDE | CENTER | OPPOSITE KEYING SIDE | Direct Current | | | Alternating Current (400 HERTZ) | | |
| | | | | | Lamp-Load Circuit | Resistive Circuit | Inductive Circuit | Lamp-Load Circuit | Resistive Circuit | Inductive Circuit |
| | | | | | 28 Volts | 28 Volts | 28 Volts | 115 Volts | 115 Volts | 115 Volts |
| MS25068-21 | MS25068-1 | ON | OFF | ON | 5 | 20 | 12 | 4 | 20 | 15 |
| -23 | -3 | | NONE | | | | | | | |
| -24 | -11 | NONE | OFF | | 4 | 18 | 10 | 2 | 11 | 5 |
| -25 | -13 | | MOM-OFF | | | | | | | |
| -26 | -10 | MOM-ON | NONE | MOM-ON | | | | | | |
| -27 | -7 | | OFF | NONE | | | | | | |
| -28 | -12 | | | ON | | | | | | |
| -31 | -5 | | | | | | | | | |

1. ALL SWITCHES ON THIS STANDARD ARE DESIGNED SO THAT THE MOVEMENT OF THE SWITCH MECHANISM IS OPPOSITE TO THAT OF THE TOGGLE LEVER
2. MAXIMUM WEIGHT IS 0.16 LBS
3. ENDURANCE ELECTRICAL 10,000 CYCLES
MECHANICAL 20,000 CYCLES

REFERENCED DOCUMENTS SHALL BE OF THE ISSUE IN EFFECT ON THE DATE OF INVITATION FOR BID.
FOR DESIGN FEATURE PURPOSES, THIS STANDARD TAKES PRECEDENCE OVER PROCUREMENT DOCUMENTS REFERENCED HEREIN

⓵ INACTIVE FOR DESIGN AFTER 16 SEP 1969
USE MS24525 OR MS25308

| | | | |
|--|--|-------------------|------|
| PA AF 85 | TITLE SWITCH, TOGGLE, FOUR POLE, SEALED TOGGLE | MILITARY STANDARD | |
| Other Cust ARMY - ER NAVY - AS | | MS25068 | |
| PROCUREMENT SPECIFICATION MIL-S-8373I | SUPERSEDES | SHEET 1 | OF 1 |

Reviewer - AF 11, AV, EC, ES

This military standard is approved by the Department of Defense and is mandatory on all activities. Selection for all new engineering and design applications and for repetitive use shall be made from this document.

APPROVED 28 MARCH 1954 REVISED Ⓚ 20 APRIL 1967 ⓔ 16 SEPT 1969 ⓕ 22 APRIL 1971 ⓖ 22 MAY 1972 ⓗ 17 NOV 1972 ⓙ 15 NOV 80