

INCH-POUND

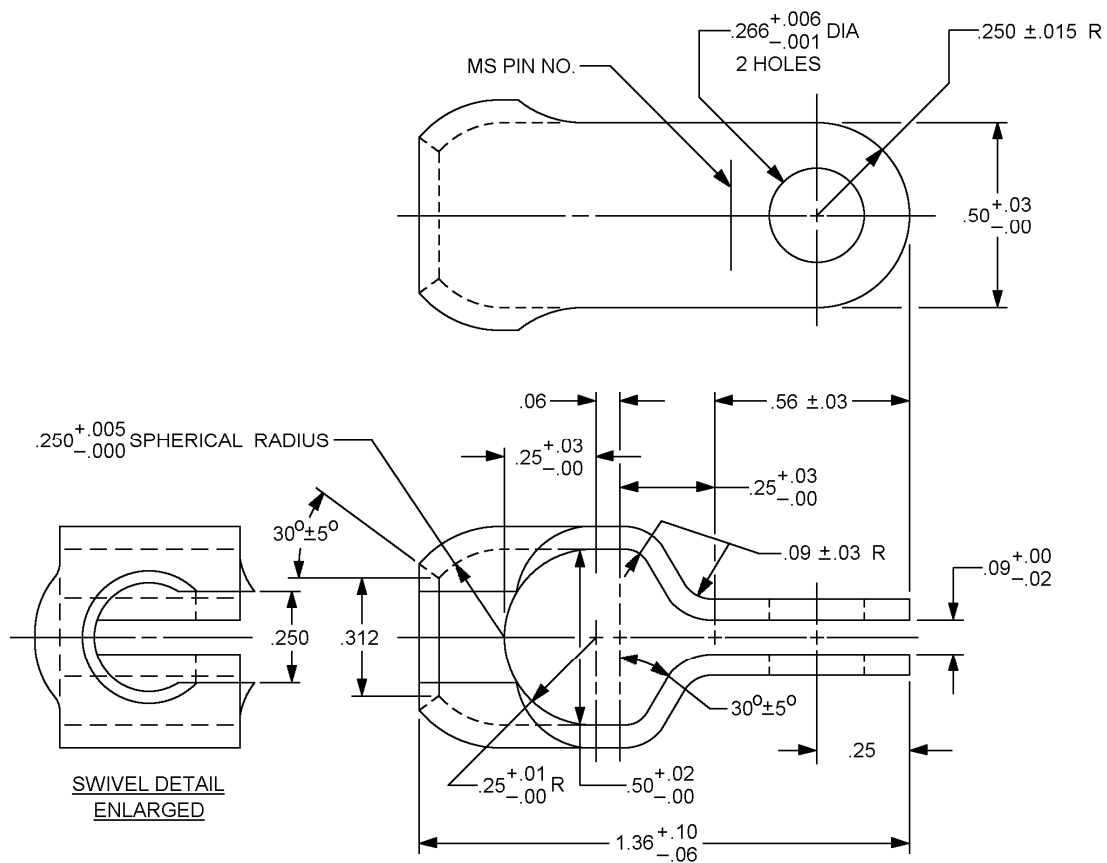
MS25057C
 9 November 2007
 SUPERSEDING
 MS25057B
 18 January 2005

DETAIL SPECIFICATION SHEET

TAKEUP, ANTENNA

This specification sheet is approved for use by all Departments and Agencies of the Department of Defense.

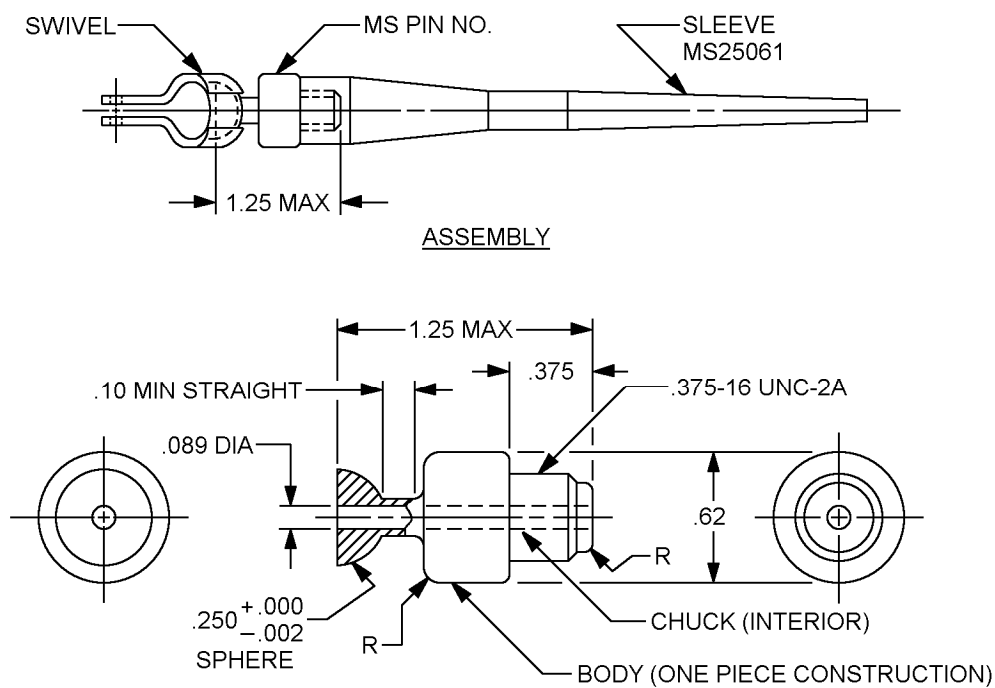
Inactive for new design as of 4 June 1999. No superseding specification.



MS PIN
MS25057-1

FIGURE 1. Dimensions and configuration.

MS25057C



TAKEUP SUBASSEMBLY DETAIL ENLARGED

NOTES:

1. Unless otherwise specified, dimensions are in inches: One place decimal $\pm .1$, two place decimals $\pm .02$.
2. Millimeters are for information only.
3. Remove burrs and sharp edges.

FIGURE 1. Dimensions and configuration - Continued.

MS25057C

REQUIREMENTS:

Material: Swivel: .06 inch thick corrosion-resistant steel, in accordance with SAE-AMS documents 5902, 5517, 5518, 5519 and ASTM-A666.

Material for socket and tension takeup body shall be corrosion resistant steel in accordance with ASTM-A276.

The ball is to be coated with appropriate surface lubricant.

Threads: Shall conform to MIL-S-7742.

Maximum weight: 0.11 pound.

Acquisition document: MIL-DTL-7965.

This specification sheet takes precedence over documents referenced herein.

Referenced documents. In addition to MIL-DTL-7965, this document references the following:

ASTM-A666	SAE-AMS-5518
MIL-S-7742	SAE-AMS-5519
MS25061	SAE-AMS-5902
SAE-AMS-5517	

Changes from previous issue. Marginal notations are not used in this revision to identify changes with respect to the previous issue due to the extent of the changes.

Custodians:
Navy - AS
Air Force - 11
DLA - CC

Preparing activity:
DLA - CC

(Project 5985-2007-027)

NOTE: The activities listed above were interested in this document as of the date of this document. Since organizations and responsibilities can change, you should verify the currency of the information above using the ASSIST Online database at <http://assist.daps.dla.mil>.