

INCH-POUND

MS25032K
W/AMENDMENT 2
20 June 2006
SUPERSEDING
MS25032K
W/AMENDMENT 1
14 February 2001

MILITARY SPECIFICATION SHEET

RELAY, ELECTROMAGNETIC, 200 AMPERES, 2 PDT,
(N.O.) TYPE II, NONHERMETICALLY SEALED,
MECHANICALLY INTERLOCKED

INACTIVE FOR NEW DESIGN
AFTER 28 SEPTEMBER 1990. NO
SUPERSEDING STANDARD.

This specification is approved for use by all Departments
and Agencies of the Department of Defense.

The requirements for acquiring the product described herein
shall consist of this specification sheet and [MIL-PRF-6106](#).

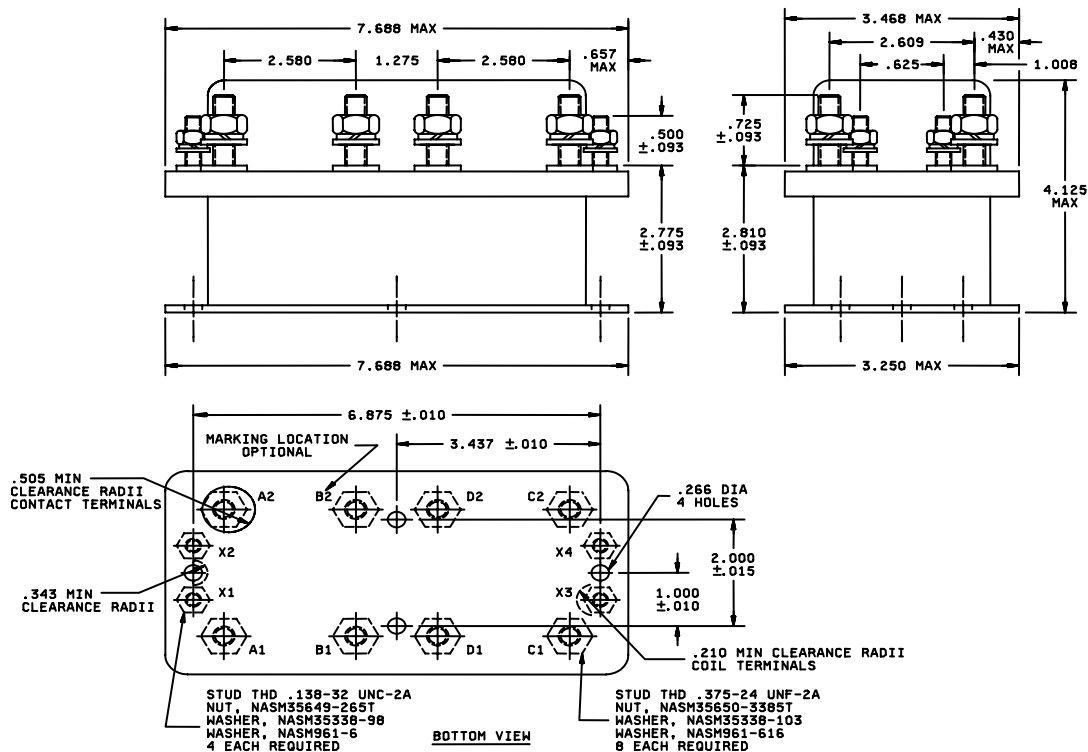
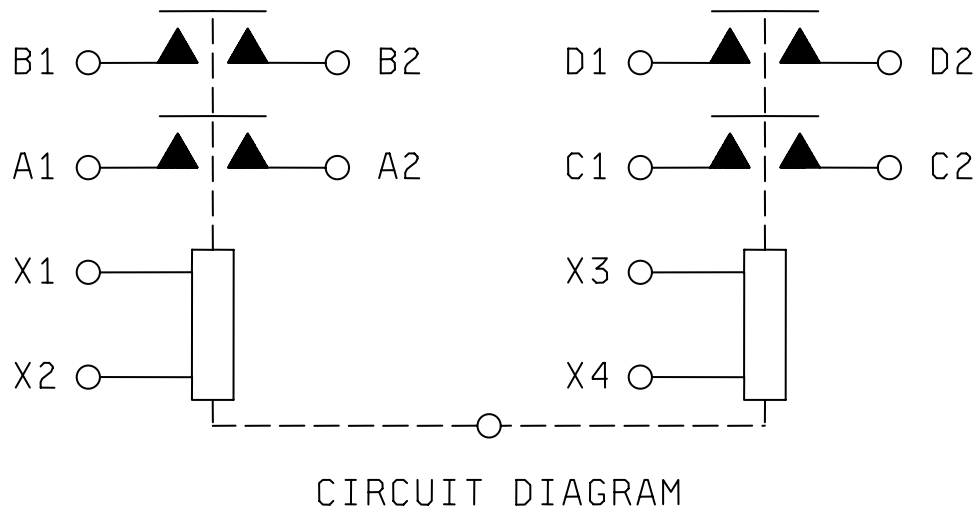


FIGURE 1. Dimensions and configurations.

MS25032K
W/AMENDMENT 2



Inches	mm	Inches	mm	Inches	mm
.010	0.25	.505	12.83	2.827	71.81
.093	2.36	.531	13.49	2.905	73.79
.138	3.51	.625	15.88	3.250	82.55
.210	5.33	.657	16.69	3.437	87.30
.266	6.76	1.000	25.40	3.468	88.09
.343	8.71	1.008	25.60	4.125	104.78
.375	9.53	1.156	29.36	6.875	174.63
.430	10.92	2.000	50.80	7.688	195.28
.500	12.70	2.609	66.27		

NOTES:

1. Dimensions are in inches.
2. Metric equivalents are given for general information only.
3. Unless otherwise specified, tolerance is ± 0.032 (0.81 mm).
4. An additional flat washer may be used for terminal seating.
5. In the event of a conflict between the text of this specification and the references cited herein, this specification shall take precedence.
6. Referenced Government documents of the issue listed are available online at <http://assist.daps.dla.mil/quicksearch/> or <http://assist.daps.dla.mil/> or from the Standardization Document Order Desk, 700 Robbins Avenue, Building 4D, Philadelphia, PA 19111-5094. Specified in the solicitation form a part of this document to the extent specified herein.
7. Terminal numbers shall not appear on the relay header. There shall be affixed to the relay a legible circuit diagram that identifies each terminal location.
8. Mechanical linkage shall be provided to prevent both relays from being closed at the same time.

FIGURE 1. Dimensions and configuration - Continued.

MS25032K
W/AMENDMENT 2

REQUIREMENTS:

Dimensions and configuration: See [figure 1](#).

Dash number and general characteristics: See [table I](#).

Contact data:

Load ratings: See [table II](#).

Maximum contact drop, initial: 0.150 V.

After life test: 0.175 V.

Overload current (NO): 1,600 amperes.

Rupture current (NO): 2,000 amperes.

Coil data: See [table III](#).

Duty rating: Continuous.

RFI specification: [MIL-STD-461](#) (applicable to coil circuits of ac operated relays).

Electrical data:

Minimum insulation resistance:

Initial: 100 megohms.

After life or environmental test: 50 megohms.

Dielectric strength:

Sea level, 2-5 seconds:

	Initial		After life tests	
	28 V dc	115 V ac	28 V dc	115 V ac
Coil to case:	1,250	N/A	1,000	N/A
Aux. contacts:	1,250	N/A	1,000	N/A
All other points:	1,250	1,500	1,000	1,125

Altitude, 1 minute.

	28 V dc	115 V ac
Coil to case:	500	N/A
Aux. contacts:	500	N/A
All other points:	500	500

MS25032K
W/AMENDMENT 2

Environmental characteristics:

Temperature range: -55°C to +71°C.

Maximum altitude rating: 50,000 feet.

Shock, g-level: 25 g's.

Duration: 6-9 ms.

Maximum duration contact opening: 2 ms.

Vibration levels, sinusoidal: See [table IV](#).

Acceleration: 10 g's.

Qualification by similarity: See [MIL-PRF-6106](#).

Part or Identifying Number (PIN): MS25032-D1.

TABLE I. Dash number and general characteristics.

PIN MS25032-	Type	Coil	Terminal type	Mounting means	Maximum weight (pounds)
D1	II	dc	Stud	Plate	5.5

TABLE II. Rated contact load (amperes per pole) case grounded.

Type of load	Life operating cycles x 10 ³	28 V dc				115 V ac, 1 phase				115/200 V ac, 3 phase ^{1/}			
		Main		Aux		Main		Aux		Main		Aux	
		NO	NC	NO	NC	400 Hz	60 Hz	400 Hz	60 Hz	400 Hz	60 Hz	400 Hz	60 Hz
Resistive	50	200				150							
Inductive	10	100											
Motor	50	150				100							
Lamp													
Transfer load ^{2/}													
Mechanical life (reduced current)	100	50											
Mixed loads		See MIL-PRF-6106											

^{1/} Absence of value indicates that the relay is not rated for 3 phase applications.

^{2/} Transfer load indicates that the relay is suitable for transfer between unsynchronized ac power supplies at the rating indicated.

TABLE III. Operating characteristics.

PIN MS25032-	Coil data											Time - (milliseconds maximum)					
	Coil	Rated			Max		Max pick-up voltage			Hold voltage 2/	Drop- out voltage 2/	Operate 3/	Release 4/	Bounce			
		Volts 1/	Freq. (Hz)	Res (Ω)	Volts	Ampere	Normal 2/	High temp test	Cont current test					Main		Aux	
														NO	NC	NO	NC
D1	X1,X2 Y1,Y2	28	dc	41	29	.80	18	21	22.5	7.0	1.5	40	15	5.0			

1/ CAUTION: Use of any coil voltage less than rated coil voltage will compromise the operation of the relay.

2/ Over the temperature range.

3/ With rated coil voltage.

4/ From rated coil voltage.

MS25032K
W/AMENDMENT 2

MS25032K
W/AMENDMENT 2

TABLE IV. Vibration (sinusoidal).

PIN MS25032-	5-10 Hz	10-55 Hz	55-250 Hz	250-500 Hz	500-1500 Hz
D1	.08 DA	.06 DA	2 g's	2 g's	N/A

Quality assurance provisions: Group B and group C testing are not required. The manufacturer shall notify the qualifying activity in the event of any design or construction changes, and shall impose additional testing requirements as necessary.

The Qualified Products List (QPL) associated with this inactive for new design specification will be maintained until acquisition of the product is no longer required, whereupon the specification and the QPL will be canceled.

Changes from previous issue. The margins of this specification are marked with vertical lines to indicate where changes from the previous issue were made. This was done as a convenience only and the Government assumes no liability whatsoever for any inaccuracies in these notations. Bidders and contractors are cautioned to evaluate the requirements of this document based on the entire content irrespective of the marginal notations and relationship to the last previous issue.

NOTE: Referenced documents. In addition to MIL-PRF-6106, this document references the following:

NASM 961	NASM 35649
NASM 35338	NASM 35650
MIL-STD-461	

Custodians:
Navy - AS
Air Force - 11
DLA-CC

Preparing activity:
DLA - CC

(Project 5945-2006-019)

NOTE: The activities listed above were interested in this document as of the date of this document. Since organizations and responsibilities can change, you should verify the currency of the information above using the ASSIST Online database at <http://assist.daps.dla.mil>.