

INCH-POUND

MS25024G
 15 December 2001
 SUPERSEDING
 MS25024F
 12 August 1964

DETAIL SPECIFICATION SHEET

RELAY, 10 AMP, 4PDT, SEALED, CLASS O

Inactive for new design after 12 August 1964.
 For new design, use MS24568 dash number DI.

This specification is approved for use by all Departments
 and Agencies of the Department of Defense.

The requirements for acquiring the relay described herein shall
 consist of this specification and the latest issue of MIL-PRF-6106.

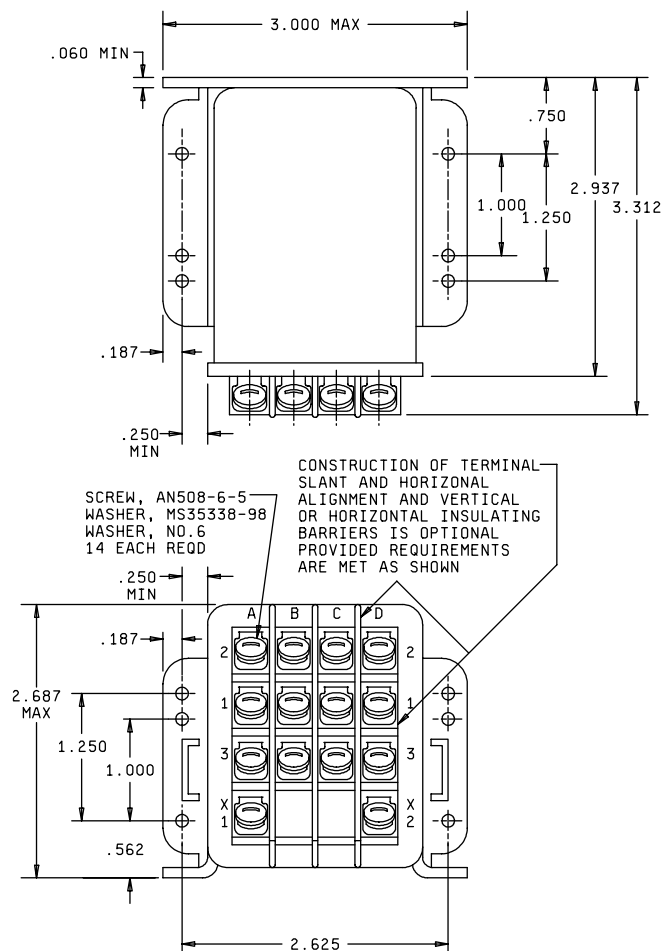
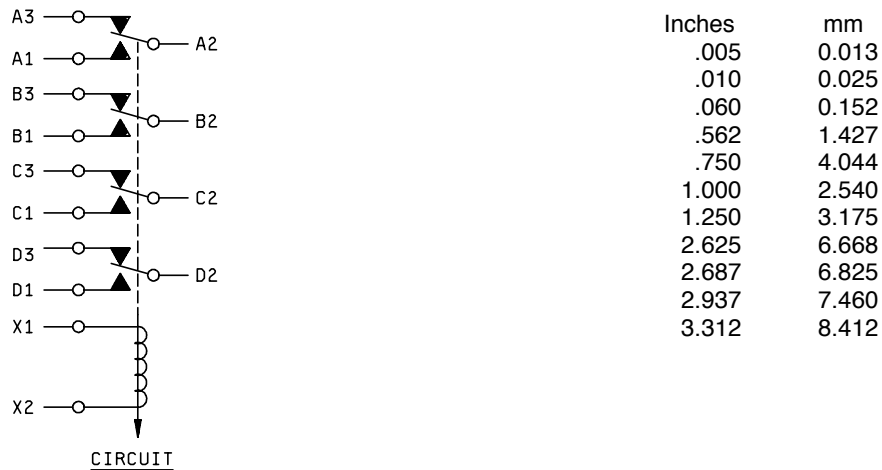


FIGURE 1. Configurations and dimensions.

MS25024G



NOTES:

1. Dimensions are in inches.
2. Metric equivalents are given for general information only.
3. Unless otherwise specified, tolerance are ± 0.010 (0.025 mm).

FIGURE 1. Configurations and dimensions - Continued.

REQUIREMENTS

Operating cycles: 50,000 minimum.

Contact data:

Contact voltage drop:

Initial: 0.150 volt maximum.

After life: 0.175 maximum.

Load ratings: See Table I.

TABLE I - Rated contact load (per pole).

Type of load	Amperes
Resistive (DC)	10
Resistive (AC 400 Hz, 115 volts)	10
Inductive	10
Motor	6
Mixed loads MS25024-2	See MIL-PRF-6106.

Overload current: See MIL-PRF-6106.

Rupture current: See MIL-PRF-6106.

MS25024G

Coil data:

Nominal coil voltage: 28 volts.
Maximum operating voltage: 29 volts.
Pickup voltage: 18 volts.
Hold voltage: 7 volts
Dropout voltage: 1.5 volts.
Rated duty: Continuous.
Coil current: 0.35 amperes, maximum.

Physical data:

Weight: 0.8 pounds, maximum.

Qualification by similarity: See MIL-PRF-6106.

Retention of qualification: To retain qualification, the manufacturer shall submit group A acceptance reports on a yearly basis to the qualifying activity.

Quality conformance inspection: Performance of groups B and C tests are not applicable.

Part or Identifying Number (PIN): MS25024-2.

Supersession information:

Interchangeability relationship:

MS25024 parts are functionally interchangeable with MS24568 Dash Number DI parts.

MS25024 parts are dimensionally interchangeable with MS24568 Dash Number DI parts in most cases but not in all cases.

Dimensional interchangeability is determined by the installation and a determination must be made for each different installation.

Part MS25024-2 supersedes MS25024-1.

MS25024 supersedes USAF Drawing 51B6328.

Custodian:

Army - CR
Navy - AS
Air Force - 11
DLA - CC

Preparing activity:

DLA - CC

Review activity:

Air Force - 99

(Project 5945-1128-01)